

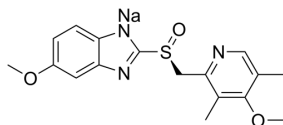
## Esomeprazole (sodium)

Cat. No.:	HY-17023
CAS No.:	161796-78-7
Batch No.:	81003
Chemical Name:	1H-Benzimidazole, 6-methoxy-2-[(S)-[(4-methoxy-3,5-dimethyl-2-pyridinyl)methyl]sulfinyl]-, sodium salt (1:1)

### PHYSICAL AND CHEMICAL PROPERTIES

Molecular Formula:	C <sub>17</sub> H <sub>18</sub> N <sub>3</sub> NaO <sub>3</sub> S
Molecular Weight:	367.40
Storage:	4°C, sealed storage, away from moisture and light * The compound is unstable in solutions, freshly prepared is recommended.

Chemical Structure:



### ANALYTICAL DATA

Appearance:	White to off-white (Solid)
<sup>1</sup> H NMR Spectrum:	Consistent with structure
LCMS:	Consistent with structure
Purity (LCMS):	99.35%
Conclusion:	The product has been tested and complies with the given specifications.

**Caution: Product has not been fully validated for medical applications. For research use only.**

Tel: 609-228-6898

Fax: 609-228-5909

E-mail: tech@MedChemExpress.com

Address: 1 Deer Park Dr, Suite Q, Monmouth Junction, NJ 08852, USA