

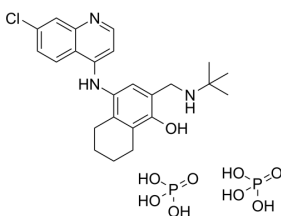
Naphthoquine (phosphate)

Cat. No.:	HY-17036
CAS No.:	173531-58-3
Batch No.:	06390
Chemical Name:	1-Naphthalenol, 4-[[7-chloro-4-quinolinyl)amino]-2-[[1,1-dimethylethyl)amino)methyl]-5,6,7,8-tetrahydro-, phosphate (1:2) (salt) (9Cl)

PHYSICAL AND CHEMICAL PROPERTIES

Molecular Formula:	C ₂₄ H ₃₄ ClN ₃ O ₉ P ₂		
Molecular Weight:	605.94		
Storage:	Powder	-20°C	3 years
		4°C	2 years
	In solvent	-80°C	6 months
		-20°C	1 month

Chemical Structure:



ANALYTICAL DATA

Appearance:	Light yellow to yellow (Solid)
¹ H NMR Spectrum:	Consistent with structure
Purity (NMR):	≥98.0%
Conclusion:	The product has been tested and complies with the given specifications.

Caution: Product has not been fully validated for medical applications. For research use only.

Tel: 609-228-6898

Fax: 609-228-5909

E-mail: tech@MedChemExpress.com

Address: 1 Deer Park Dr, Suite Q, Monmouth Junction, NJ 08852, USA