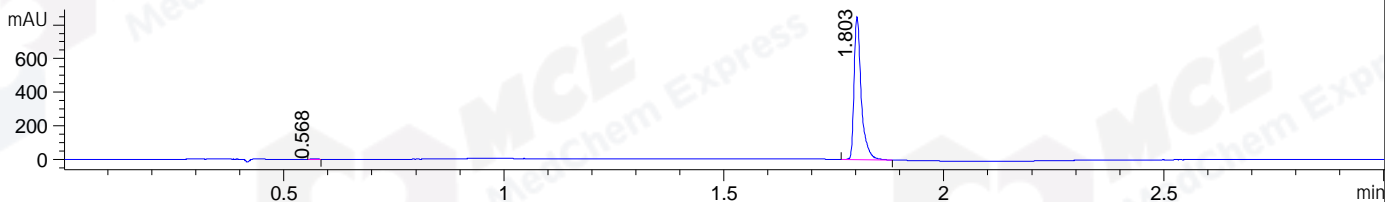
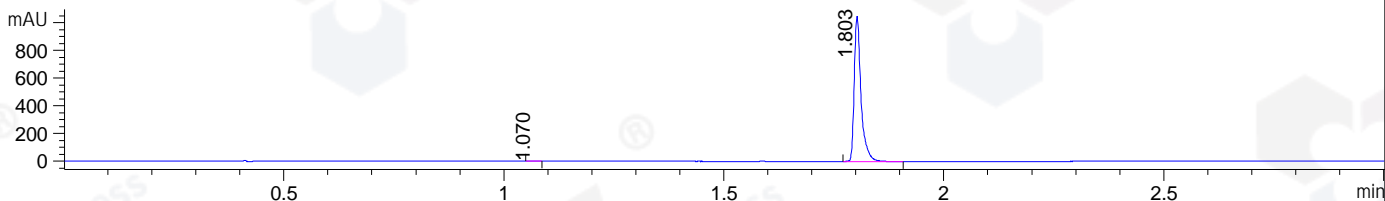


File ..\DATA\2019\20190711\627\CPK2019-710-11713.D Tgt Mass (CHM):
 Injection Date : 11 Jul 19 11:28 am +0800 Seq. Line : 35
 Sample Name : CPK2019-710-11713 Location : P1-B-06
 Acq. Operator : ZJ_1432 Inj : 1
 Spec. Reported : MS Integration Inj Volume : 1 ul
 Acq. Method : D:\Chem32\1\data\2019\20190711\627\1-POS-3MIN.M
 Analysis Method : D:\CHEM32\1\DATA\2019\20190711\627\1-POS-3MIN.M
 Catalog No : HY-17376 Batch# 11713
 Method Info : Mobile Phase: A: water(0.01%TFA) B:ACN(0.01%TFA)
 Gradient: 5% to 95%B within 1.3 min
 Flow Rate :1.8ml/min
 Column :SunFire C18, 4.6*50mm,3.5um A-RP-433
 Oven Temperature : 45□

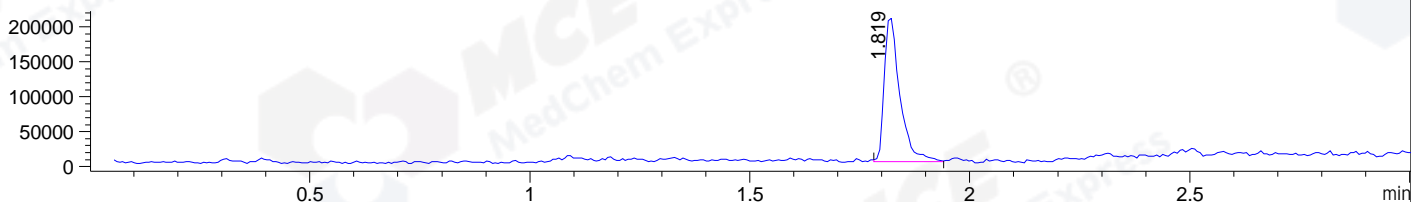
DAD1 B, Sig=214,4 Ref=off



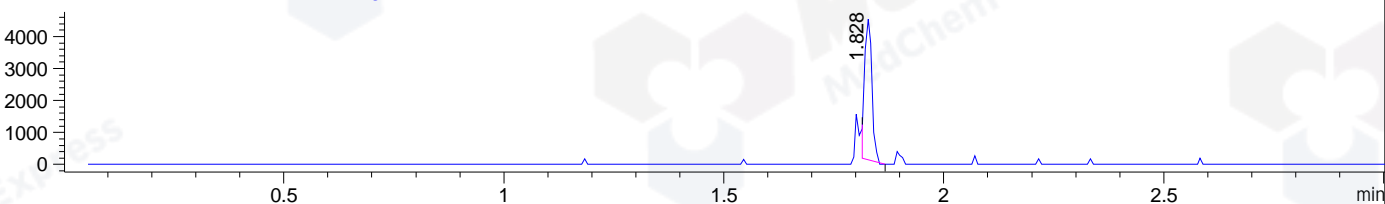
DAD1 C, Sig=254,4 Ref=off



MSD1 TIC, MS File ES-API, Pos, Scan, Frag: 70



Ion 410.4367, MSD1 410.4367, Target Mass 409.4367 +H Positive, EIC=410.14:411.14



Integration Results for DAD1 B, Sig=214,4 Ref=off

RetTim	Width	Area	Height	Area%	MS (+)
0.57	0.02	1.49	1.54	0.15	ND
1.80	0.02	963.04	853.15	99.85	392

Integration Results for DAD1 C, Sig=254,4 Ref=off

RetTim	Width	Area	Height	Area%	MS (+)
1.07	0.02	0.79	0.69	0.07	222
1.80	0.02	1128.25	1048.99	99.93	392

Integration Results for MSD1 TIC, MS File

RetTim	Width	Area	Height	Area%	MS (+)
1.82	0.04	508892.16	208015.42	100.00	392

Ret. Time: 1.82

<<<< POSITIVE SPECTRA >>>>

ES-API Positive

