

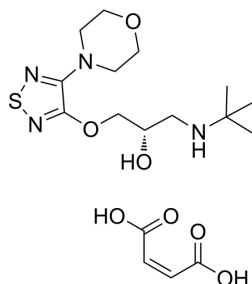
## (S)-Timolol (Maleate)

Cat. No.: HY-17380  
 CAS No.: 26921-17-5  
 Batch No.: 14559  
 Chemical Name: 2-Propanol, 1-[(1,1-dimethylethyl)amino]-3-[[4-(4-morpholinyl)-1,2,5-thiadiazol-3-yl]oxy]-, (2S)-, (2Z)-2-butenedioate (1:1)

### PHYSICAL AND CHEMICAL PROPERTIES

Molecular Formula:  $C_{17}H_{28}N_4O_7S$   
 Molecular Weight: 432.49  
 Storage: 4°C, sealed storage, away from moisture  
 \* In solvent : -80°C, 6 months; -20°C, 1 month (sealed storage, away from moisture)

Chemical Structure:



### ANALYTICAL DATA

Appearance: White to off-white (Solid)  
 LCMS: Consistent with structure  
 Purity (LCMS): 99.89%  
 Conclusion: The product has been tested and complies with the given specifications.

**Caution: Product has not been fully validated for medical applications. For research use only.**

Tel: 609-228-6898

Fax: 609-228-5909

E-mail: tech@MedChemExpress.com

Address: 1 Deer Park Dr, Suite Q, Monmouth Junction, NJ 08852, USA