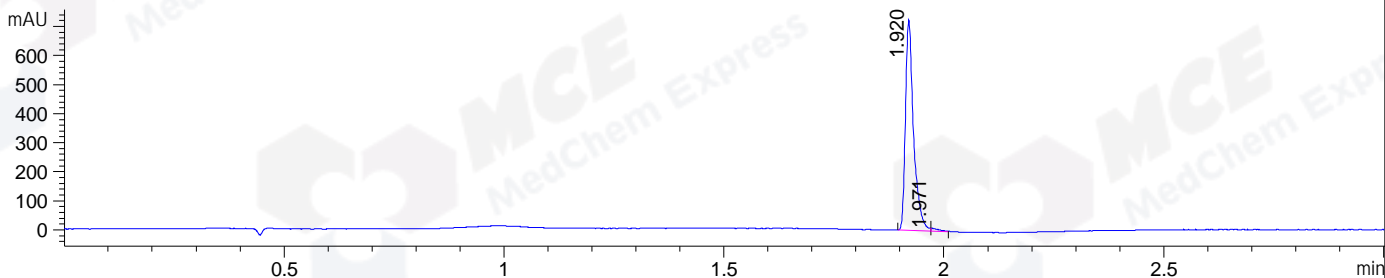
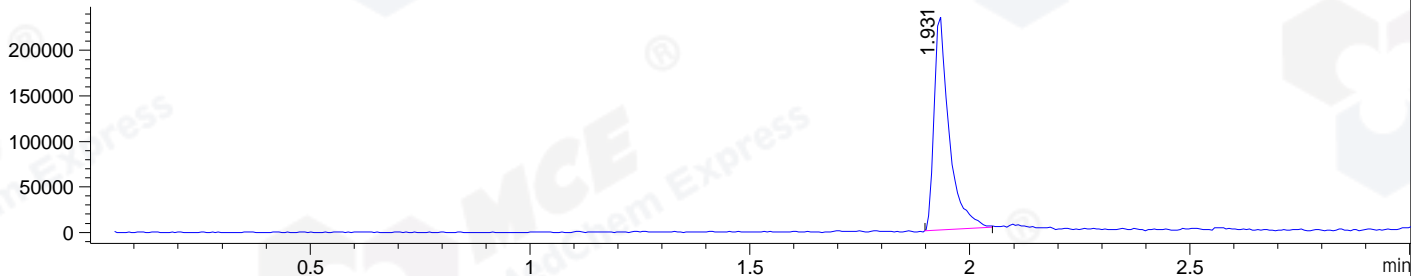


File ..\DATA\2019\20191128\778\CPK2019-N27-14560.D Tgt Mass (CHM):
 Injection Date : 28 Nov 19 12:33 pm +0800 Seq. Line : 40
 Sample Name : CPK2019-N27-14560 Location : P1-B-05
 Acq. Operator : ZJ_1432 Inj : 1
 Spec. Reported : MS Integration Inj Volume : 1 ul
 Acq. Method : D:\Chem32\1\data\2019\20191128\778\1-POS-3MIN.M
 Analysis Method : D:\CHEM32\1\DATA\2019\20191128\778\1-POS-3MIN.M
 Catalog No : HY-17399 Batch# 14560
 Method Info : Mobile Phase: A: water(0.01%TFA) B:ACN(0.01%TFA)
 Gradient: 5% to 95%B within 1.3 min
 Flow Rate :1.8ml/min
 Column :SunFire C18, 4.6*50mm,3.5um A-RP-433
 Oven Temperature : 45

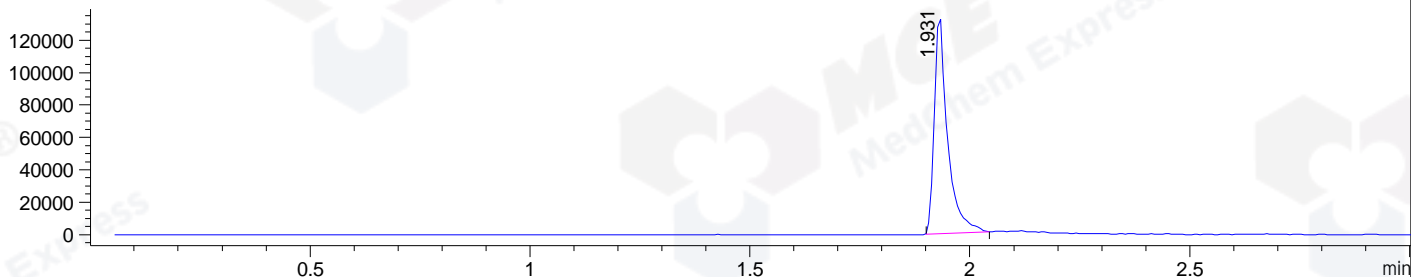
DAD1 B, Sig=214,4 Ref=off



MSD1 TIC, MS File ES-API, Pos, Scan, Frag: 70



Ion 386, MSD1 386, Target Mass 385 +H Positive, EIC=385.7:386.7



Integration Results for DAD1 B, Sig=214,4 Ref=off

RetTim	Width	Area	Height	Area%	MS (+)
1.92	0.02	929.11	724.19	98.85	386
1.97	0.02	10.79	9.33	1.15	386

Integration Results for MSD1 TIC, MS File

RetTim	Width	Area	Height	Area%	MS (+)
1.93	0.04	558283.38	236308.17	100.00	386

Ret. Time: 1.93

<<<< POSITIVE SPECTRA >>>>

ES-API Positive

