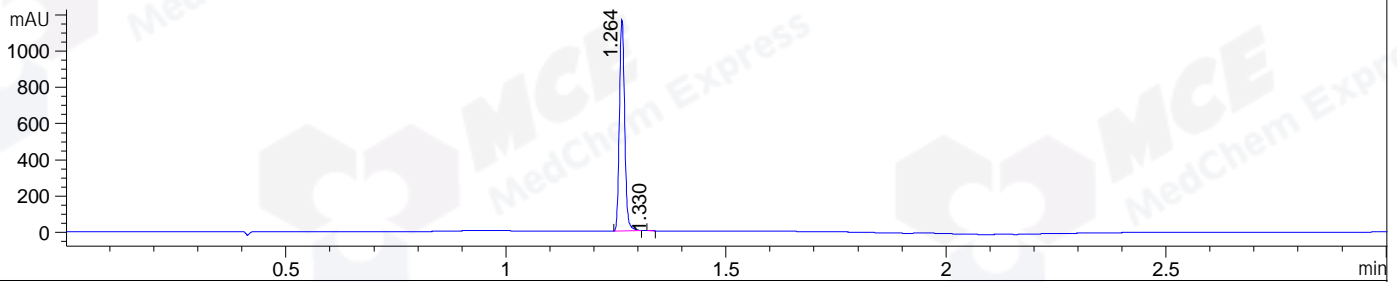
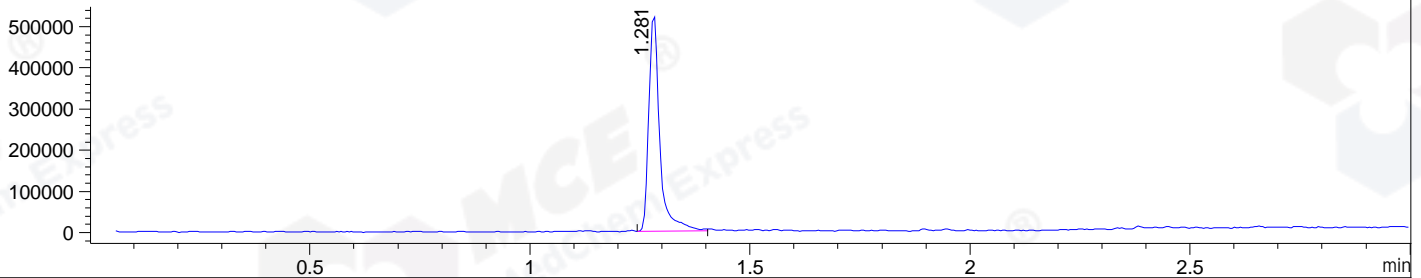


File ..DATA\2020\20201023\1135\CPK2020-023-16833.D Tgt Mass (CHM):
Injection Date : 23 Oct 20 9:58 pm +0800 Seq. Line : 112
Sample Name : CPK2020-023-16833 Location : P1-A-09
Acq. Operator : zyj_1547 Inj : 1
Spec. Reported : MS Integration Inj Volume : 1 ul
Acq. Method : D:\Chem32\1\data\2020\20201023\1135\1-POS-3MIN.M
Analysis Method : D:\CHEM32\1\DATA\2020\20201023\1135\1-POS-3MIN.M
CAS NO. : 54143-56-5
Method Info : Mobile Phase: A: water(0.01%TFA) B:ACN(0.01%TFA)
Gradient: 5% to 95%B within 1.3 min
Flow Rate :1.8ml/min
Column :SunFire C18, 4.6*50mm,3.5um A-RP-624

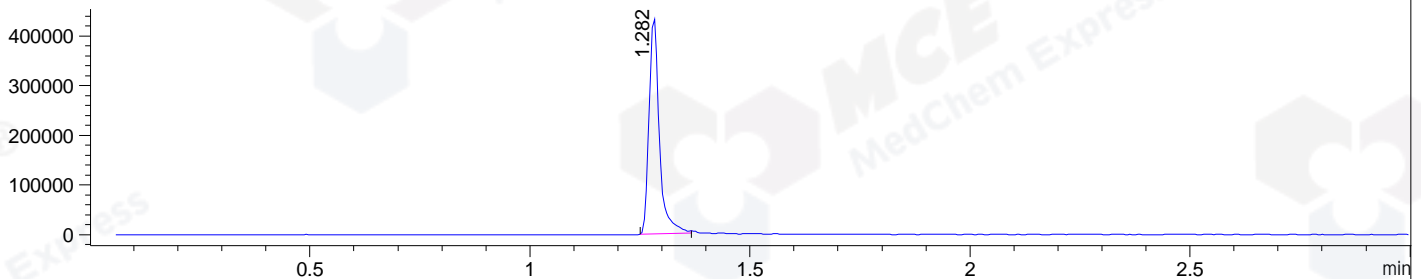
DAD1 B, Sig=214,4 Ref=off



MSD1 TIC, MS File ES-API, Pos, Scan, Frag: 70



Ion 415, MSD1 415, Target Mass 414 +H Positive, EIC=414.7:415.7



Integration Results for DAD1 B, Sig=214,4 Ref=off

RetTim	Width	Area	Height	Area%	MS (+)
1.26	0.01	966.73	1168.24	99.87	415
1.33	0.01	1.25	2.18	0.13	415

Integration Results for MSD1 TIC, MS File

RetTim	Width	Area	Height	Area%	MS (+)
1.28	0.03	918776.69	527096.38	100.00	415

Ret. Time: 1.28

<<<< POSITIVE SPECTRA >>>>

ES-API Positive

