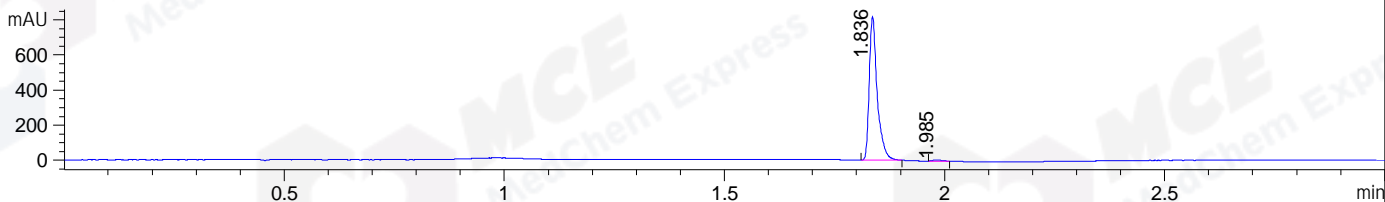
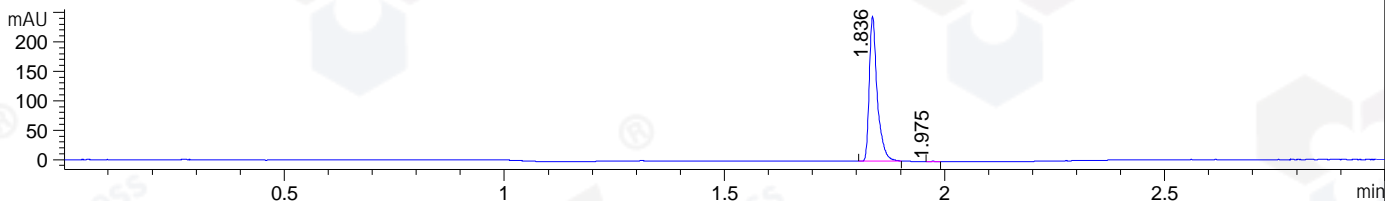


File ..\DATA\2019\20191128\778\CPK2019-N27-13147.D Tgt Mass (CHM):  
 Injection Date : 28 Nov 19 12:29 pm +0800 Seq. Line : 39  
 Sample Name : CPK2019-N27-13147 Location : P1-B-04  
 Acq. Operator : ZJ\_1432 Inj : 1  
 Spec. Reported : MS Integration Inj Volume : 1 ul  
 Acq. Method : D:\Chem32\1\data\2019\20191128\778\1-POS-3MIN.M  
 Analysis Method : D:\CHEM32\1\DATA\2019\20191128\778\1-POS-3MIN.M  
 Catalog No : HY-17443A Batch# 59432  
 Method Info : Mobile Phase: A: water(0.01%TFA) B:ACN(0.01%TFA)  
 Gradient: 5% to 95%B within 1.3 min  
 Flow Rate :1.8ml/min  
 Column :SunFire C18, 4.6\*50mm,3.5um A-RP-433  
 Oven Temperature : 45

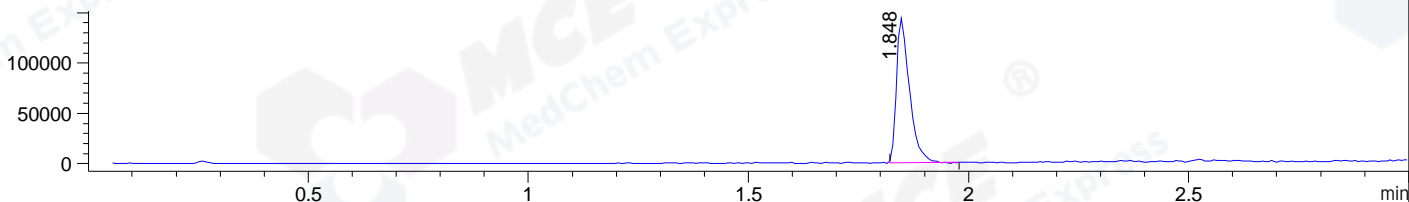
DAD1 B, Sig=214,4 Ref=off



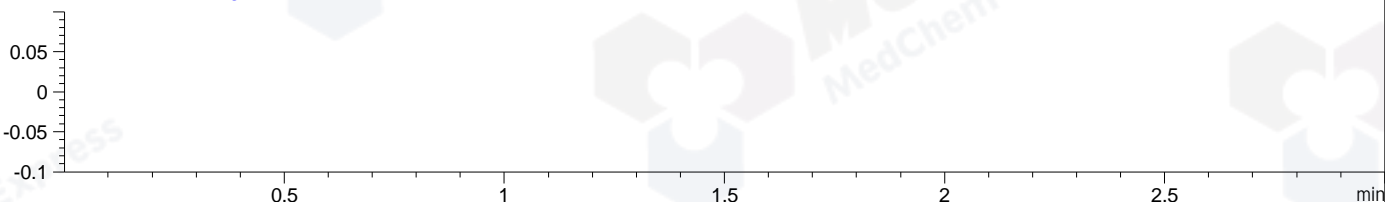
DAD1 C, Sig=254,4 Ref=off



MSD1 TIC, MS File ES-API, Pos, Scan, Frag: 70



Ion 1, MSD1 1, Target Mass 0 +H Positive, EIC=0.7:1.7



## Integration Results for DAD1 B, Sig=214,4 Ref=off

RetTim	Width	Area	Height	Area%	MS (+)
1.84	0.02	1030.90	819.75	99.13	435
1.99	0.03	9.01	5.97	0.87	ND

## Integration Results for DAD1 C, Sig=254,4 Ref=off

RetTim	Width	Area	Height	Area%	MS (+)
1.84	0.02	308.54	246.18	99.91	435
1.98	0.01	0.29	0.33	0.09	ND

## Integration Results for MSD1 TIC, MS File

RetTim	Width	Area	Height	Area%	MS (+)
1.85	0.03	294632.50	143735.03	100.00	435

Ret. Time: 1.85

<<<< POSITIVE SPECTRA >>>>

ES-API Positive

