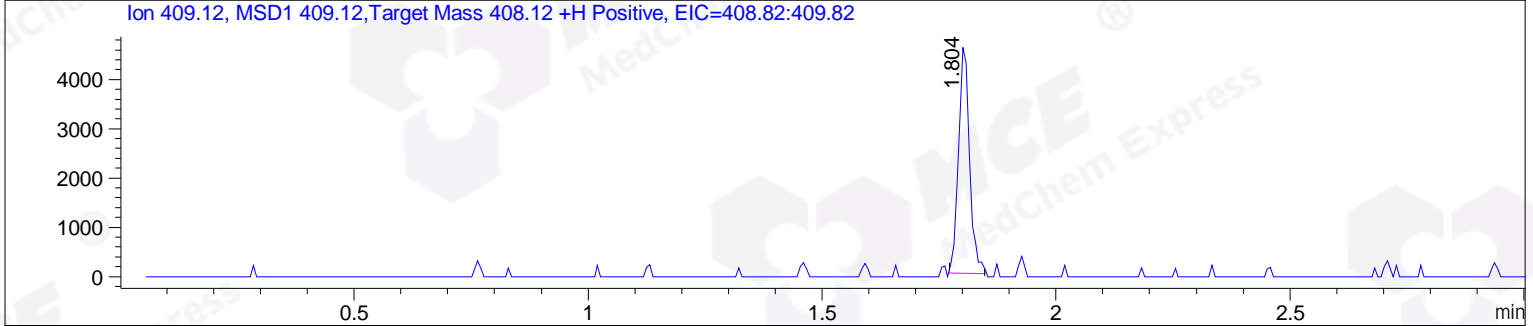
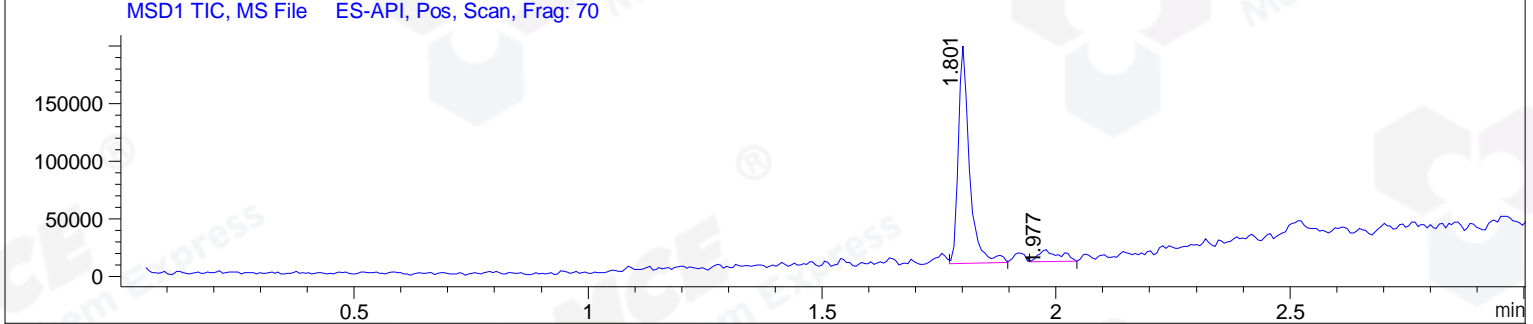
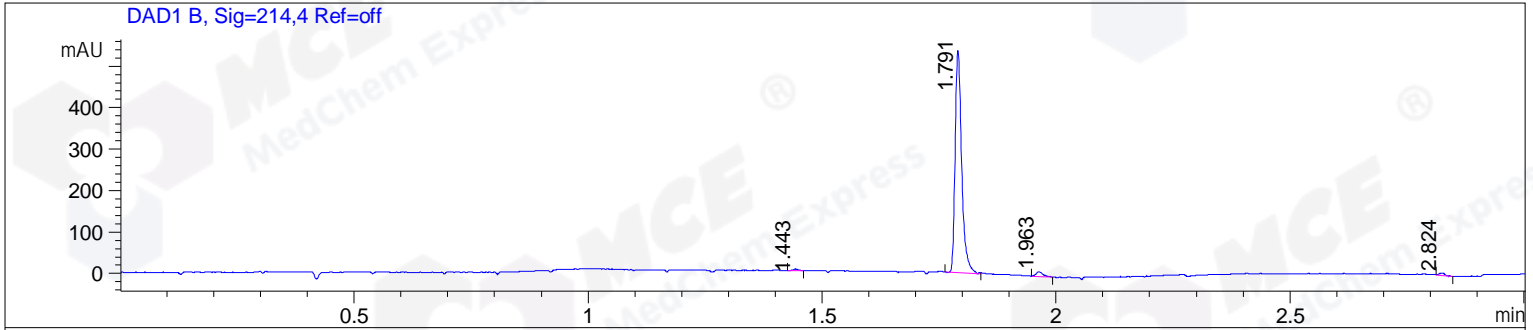


File ..1\DATA\2019\20190820\700\BIZ2019-819-CXL2.D Tgt Mass (CHM):
 Injection Date : 20 Aug 19 2:29 pm +0800 Seq. Line : 46
 Sample Name : BIZ2019-819-CXL2 Location : PL-C-02
 Acq. Operator : ZJ_1432 Inj : 1
 Spec. Reported : MS Integration Inj Volume : 1 ul
 Acq. Method : D:\Chem32\1\data\2019\20190820\700\1-POS-3MIN.M
 Analysis Method : D:\CHEM32\1\DATA\2019\20190820\700\1-POS-3MIN.M
 Catalog No : HY-17444 Batch#44596
 Method Info : Mobile Phase: A: water(0.01%TFA) B:ACN(0.01%TFA)
 Gradient: 5% to 95%B within 1.3 min
 Flow Rate :1.8ml/min
 Column :SunFire C18, 4.6*50mm,3.5um A-RP-433
 Oven Temperature : 45



Integration Results for DAD1 B, Sig=214,4 Ref=off

RetTim	Width	Area	Height	Area%	MS (+)
1.44	0.01	3.53	4.40	0.65	ND
1.79	0.02	518.82	536.69	96.24	431
1.96	0.02	11.95	11.63	2.22	159
2.82	0.01	4.82	5.64	0.89	159

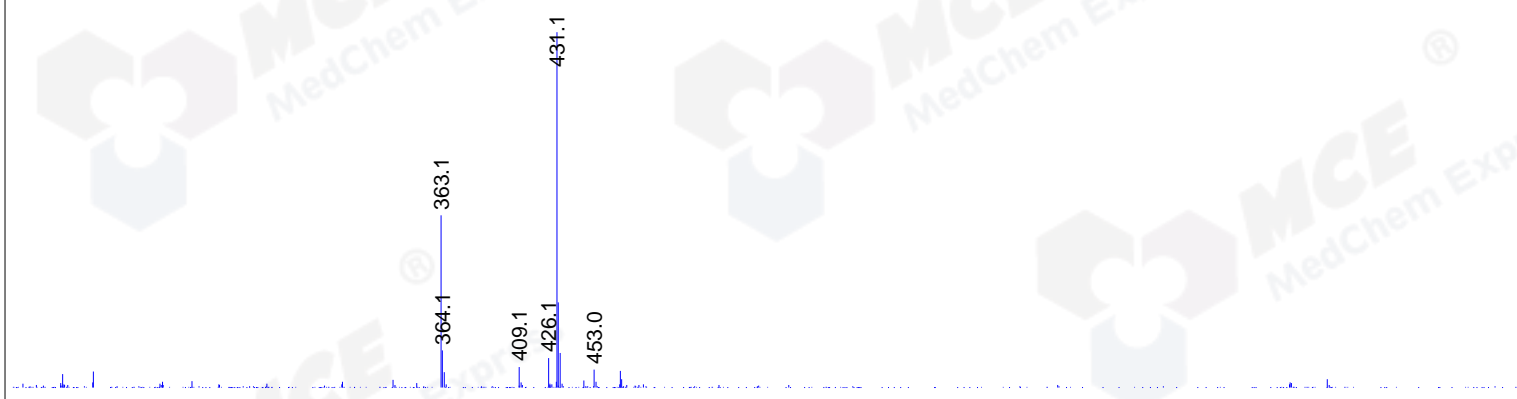
Integration Results for MSD1 TIC, MS File

RetTim	Width	Area	Height	Area%	MS (+)
1.80	0.03	315934.38	188551.27	90.68	431
1.98	0.04	32458.98	10567.97	9.32	159

Ret. Time: 1.80

<<<< POSITIVE SPECTRA >>>>

ES-API Positive



Ret. Time: 1.98

ES-API Positive

