

(S)-Metoprolol-d7

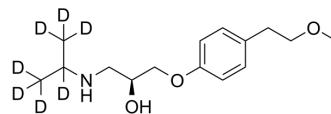
Cat. No.: HY-17503S2

CAS No.: 1292906-91-2

Molecular Formula: C₁₅H₁₈D₇NO₃

Molecular Weight: 274.41

Storage: Please store the product under the recommended conditions in the Certificate of Analysis.



Caution: Product has not been fully validated for medical applications. For research use only.

Tel: 609-228-6898

Fax: 609-228-5909

E-mail: tech@MedChemExpress.com

Address: 1 Deer Park Dr, Suite Q, Monmouth Junction, NJ 08852, USA