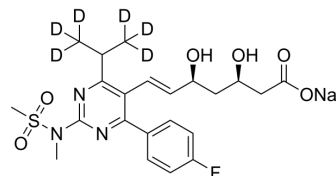


Rosuvastatin-d₆ sodium

Cat. No.:	HY-17504BS1
CAS No.:	2070009-41-3
Molecular Formula:	C ₂₂ H ₂₁ D ₆ FN ₃ NaO ₆ S
Molecular Weight:	509.56
Target:	HMG-CoA Reductase (HMGCR); Autophagy
Pathway:	Metabolic Enzyme/Protease; Autophagy
Storage:	Please store the product under the recommended conditions in the Certificate of Analysis.



BIOLOGICAL ACTIVITY

Description	Rosuvastatin-d ₆ (sodium) is deuterium labeled Rosuvastatin.
-------------	---

Caution: Product has not been fully validated for medical applications. For research use only.

Tel: 609-228-6898

Fax: 609-228-5909

E-mail: tech@MedChemExpress.com

Address: 1 Deer Park Dr, Suite Q, Monmouth Junction, NJ 08852, USA