

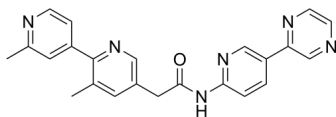
LGK974

Cat. No.: HY-17545
Batch No.: 240232
CAS No.: 1243244-14-5
Molecular Formula: C₂₃H₂₀N₆O

ANALYTICAL DATA

Theoretical: C(67.24%), H(5.30%), N(20.45%)
Result: C(67.26%), H(5.69%), N(20.395%)

Chemical Structure:



Caution: Product has not been fully validated for medical applications. For research use only.

Tel: 609-228-6898

Fax: 609-228-5909

E-mail: tech@MedChemExpress.com

Address: 1 Deer Park Dr, Suite Q, Monmouth Junction, NJ 08852, USA