

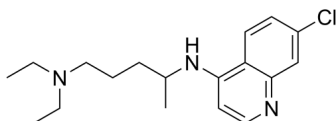
## Chloroquine

Cat. No.: HY-17589A  
Batch No.: 159402  
CAS No.: 54-05-7  
Molecular Formula: C<sub>18</sub>H<sub>26</sub>ClN<sub>3</sub>

### ANALYTICAL DATA

Theoretical: C(67.59%)、H(8.19%)、N(13.14%)  
Result: C(67.28%)、H(8.27%)、N(13.05%)

Chemical Structure:



Caution: Product has not been fully validated for medical applications. For research use only.

Tel: 609-228-6898

Fax: 609-228-5909

E-mail: [tech@MedChemExpress.com](mailto:tech@MedChemExpress.com)

Address: 1 Deer Park Dr, Suite Q, Monmouth Junction, NJ 08852, USA