

Chloroquine (phosphate) (Standard)

Cat. No.: **Molecular Formula:**

HY-17589R

 $C_{18}H_{32}ClN_3O_8P_2$
Batch No.:

334161

Molecular Weight:

515.86

CAS No.:

50-63-5

Package:

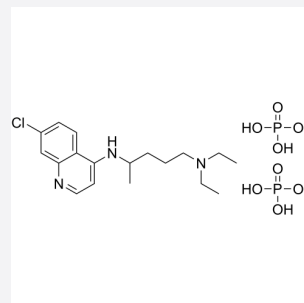
Brown glass bottle

Test Date:

2024-01-22

Storage:

4°C, sealed storage, away from moisture and light


Expiry Date:

2026-01-21 (Stability testing is ongoing to ensure concentration accuracy. The certificate of analysis and product expiry date will be updated upon completion of testing. You can download the latest version from our official website)

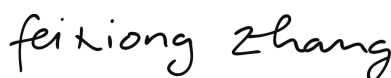
Assay: 98.31%

Assay (%) = (100% - Loss On Drying - Residue on ignition) * Purity

Analytical	Specification	Result
Appearance:	White to off-white (Solid)	White (Solid)
¹ H NMR Spectrum:	Consistent with structure	Consistent with structure
MS:	Consistent with structure	Consistent with structure
Purity:	Not less than 90.0%	99.67% (HPLC)
Loss on drying (LOD):	<3.0%	0.61%
Residue on ignition (ROI):	N/A	0.75%
Traceability:	Fully qualified and calibrated to ISO 17025 requirements. All calibrations utilize institute of metrology traceable weights which are calibrated externally by a qualified ISO 17025 accredited calibration laboratory to metrology institute standards.	



Quality Control



Quality Assurance

