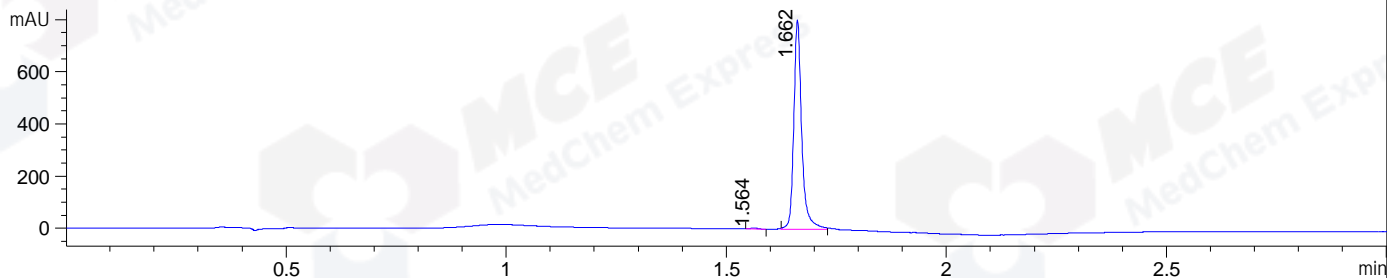
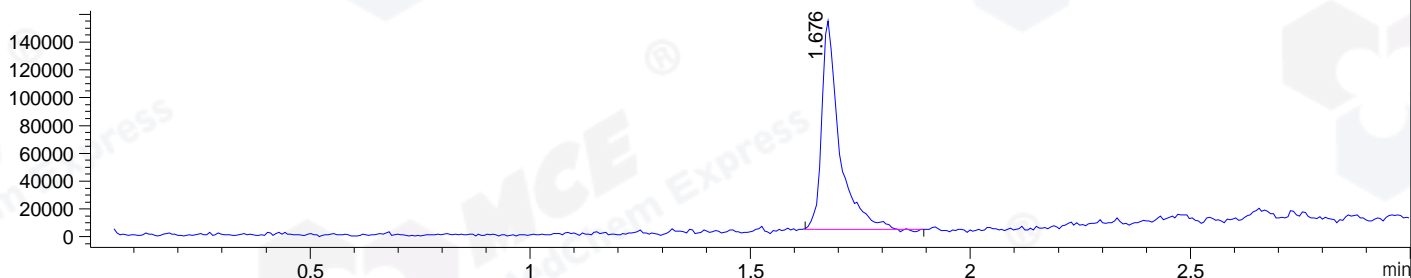


File ..\DATA\2019\20190414\562\CPK2019-410-21092.D Tgt Mass (CHM):
 Injection Date : 14 Apr 19 3:48 pm +0800 Seq. Line : 12
 Sample Name : CPK2019-410-21092 Location : P2-F-09
 Acq. Operator : LQ_1052 Inj : 1
 Spec. Reported : MS Integration Inj Volume : 1 ul
 Acq. Method : D:\Chem32\1\data\2019\20190414\562\1-POS-3MIN-1.M
 Analysis Method : D:\CHEM32\1\DATA\2019\20190414\562\1-POS-3MIN-1.M
 Catalog No : HY-17604 Batch# 21092
 Method Info : Mobile Phase: A: water(0.01%TFA) B:ACN(0.01%TFA)
 Gradient: 5% to 95%B within 1.3 min
 Flow Rate :1.8ml/min
 Column :SunFire C18, 4.6*50mm,3.5um A-RP-314
 Oven Temperature : 45

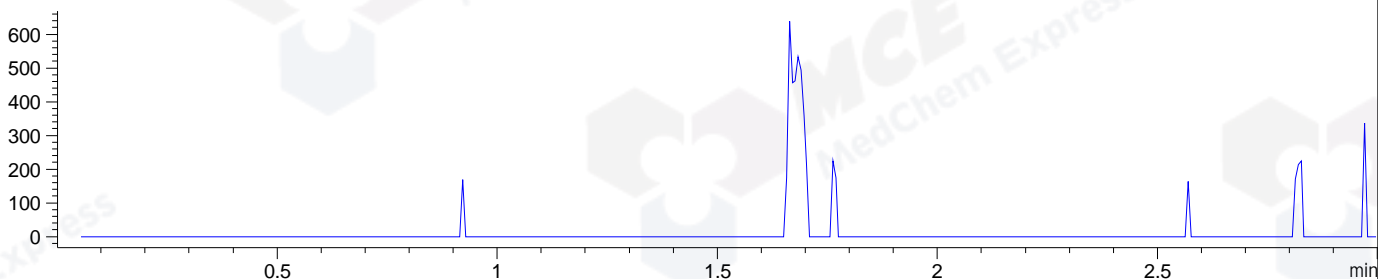
DAD1 B, Sig=214,4 Ref=off



MSD1 TIC, MS File ES-API, Pos, Scan, Frag: 70



Ion 465.9, MSD1 465.9, Target Mass 464.9 +H Positive, EIC=465.6:466.6



Integration Results for DAD1 B, Sig=214,4 Ref=off

RetTim	Width	Area	Height	Area%	MS (+)
1.56	0.02	5.23	4.78	0.52	ND
1.66	0.02	1009.47	802.68	99.48	482

Integration Results for MSD1 TIC, MS File

RetTim	Width	Area	Height	Area%	MS (+)
1.68	0.04	424102.00	150170.03	100.00	482

Ret. Time: 1.68

<<<< POSITIVE SPECTRA >>>>

ES-API Positive

