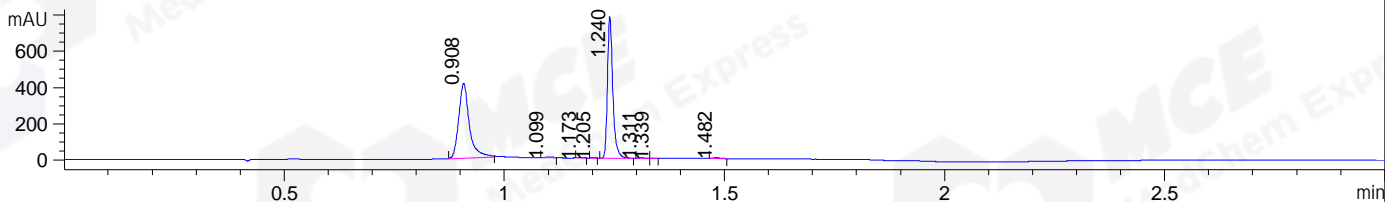
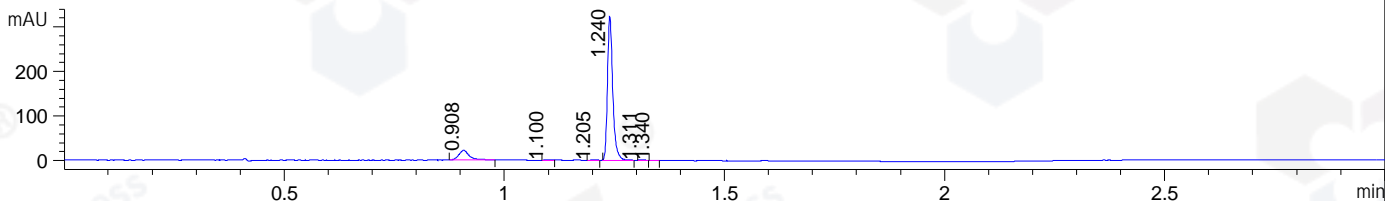


File ..DATA\2020\20200526\974\CPK2020-525-27229-.D Tgt Mass (CHM):
 Injection Date : 27 May 20 12:19 am +0800 Seq. Line : 171
 Sample Name : CPK2020-525-27229 Location : P1-F-01
 Acq. Operator : ZJ_1432 Inj : 1
 Spec. Reported : MS Integration Inj Volume : 1 ul
 Acq. Method : D:\Chem32\1\data\2020\20200526\974\1-POS-3MIN.M
 Analysis Method : D:\CHEM32\1\DATA\2020\20200526\974\1-POS-3MIN.M
 Catalog No : HY-17631A
 Method Info : Mobile Phase: A: water(0.01%TFA) B:ACN(0.01%TFA)
 Gradient: 5% to 95%B within 1.3 min
 Flow Rate :1.8ml/min
 Column :SunFire C18, 4.6*50mm,3.5um A-RP-607
 Oven Temperature : 45

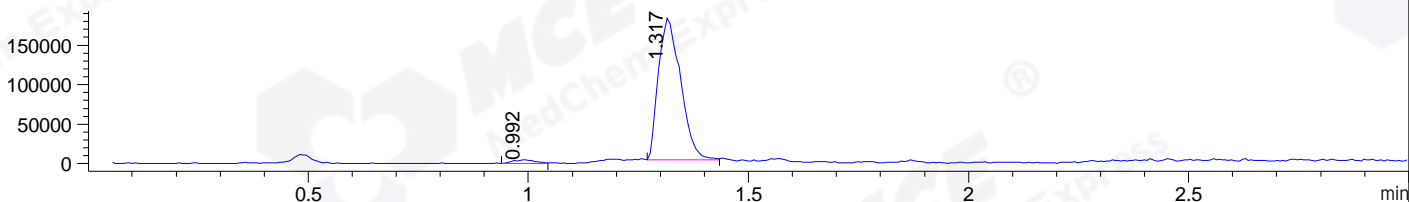
DAD1 B, Sig=214,4 Ref=off



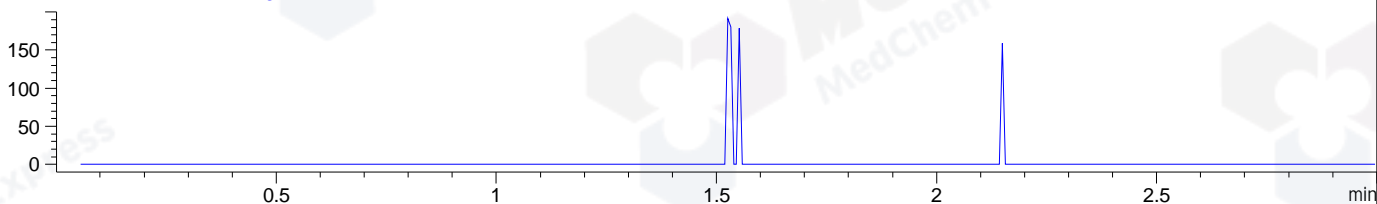
DAD1 C, Sig=254,4 Ref=off



MSD1 TIC, MS File ES-API, Pos, Scan, Frag: 70



Ion 408, MSD1 408, Target Mass 407 +H Positive, EIC=407.7:408.7



Integration Results for DAD1 B, Sig=214,4 Ref=off

RetTim	Width	Area	Height	Area%	MS (+)
0.91	0.02	691.66	410.84	50.82	ND
1.10	0.02	4.76	4.47	0.35	ND
1.17	0.01	2.39	2.94	0.18	287
1.21	0.01	1.13	1.40	0.08	287
1.24	0.01	651.48	779.88	47.86	292
1.31	0.02	3.19	3.53	0.23	292
1.34	0.01	0.75	1.17	0.05	292
1.48	0.01	5.73	5.73	0.42	292

Integration Results for DAD1 C, Sig=254,4 Ref=off

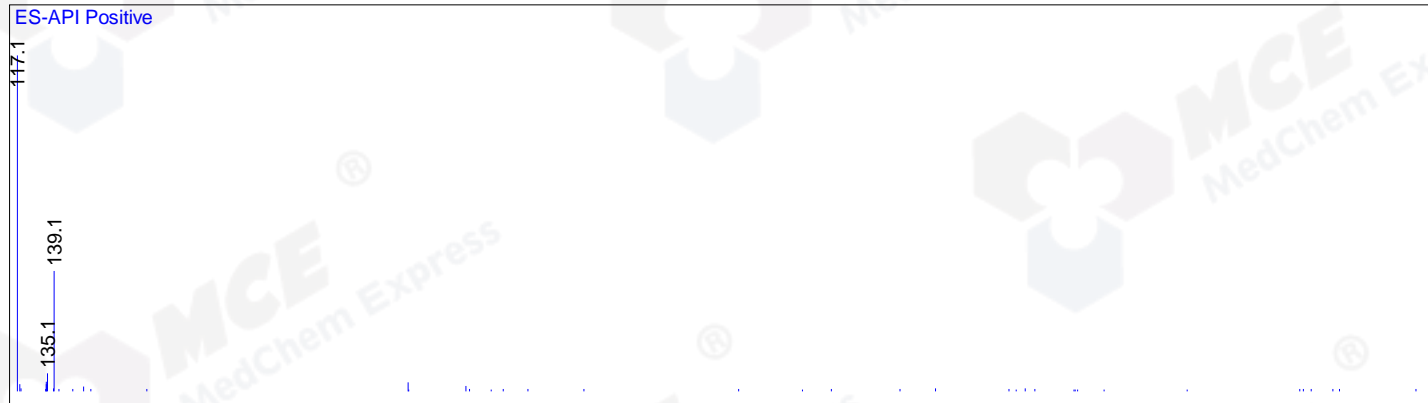
RetTim	Width	Area	Height	Area%	MS (+)
0.91	0.03	35.85	21.72	11.64	ND
1.10	0.01	0.59	0.83	0.19	ND
1.21	0.01	0.77	0.92	0.25	287
1.24	0.01	269.18	324.29	87.40	292
1.31	0.01	1.32	1.78	0.43	292
1.34	0.01	0.29	0.46	0.09	292

Integration Results for MSD1 TIC, MS File

RetTim	Width	Area	Height	Area%	MS (+)
0.99	0.05	15065.84	5022.77	2.34	117
1.32	0.05	628194.63	179602.20	97.66	292

Ret. Time: 0.99

<<<< POSITIVE SPECTRA >>>>



Ret. Time: 1.32

