

File ..1\DATA\2018\20181218\543\BIZ2018-D18-CXL2.D Tgt Mass (CHM):

Injection Date : 18 Dec 18 5:36 pm +0800 Seq. Line : 24

Sample Name : BIZ2018-D18-CXL2 Location : PL-E-07

Acq. Operator : LQ_1052 Inj : 1

Spec. Reported : MS Integration Inj Volume : 1 ul

Acq. Method : D:\Chem32\1\data\2018\20181218\543\1-POS-3MIN-1.M

Analysis Method : D:\CHEM32\1\DATA\2018\20181218\543\1-POS-3MIN-1.M

Catalog No : HY-17646 Batch#35527

Method Info : Mobile Phase: A: water(0.01%TFA) B:ACN(0.01%TFA)

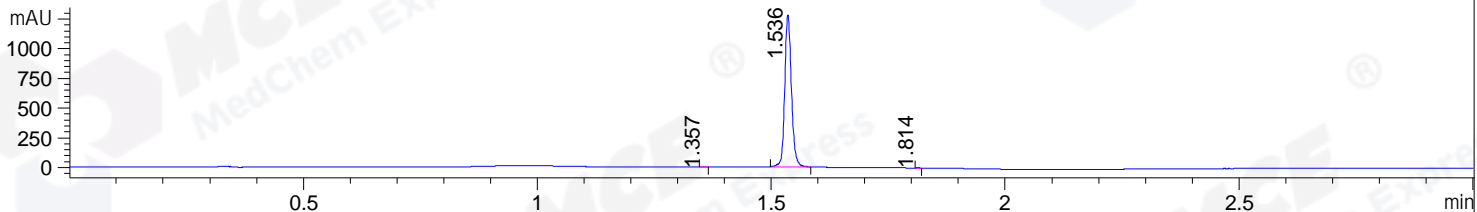
Gradient: 5% to 95%B within 1.3 min

Flow Rate :1.8ml/min

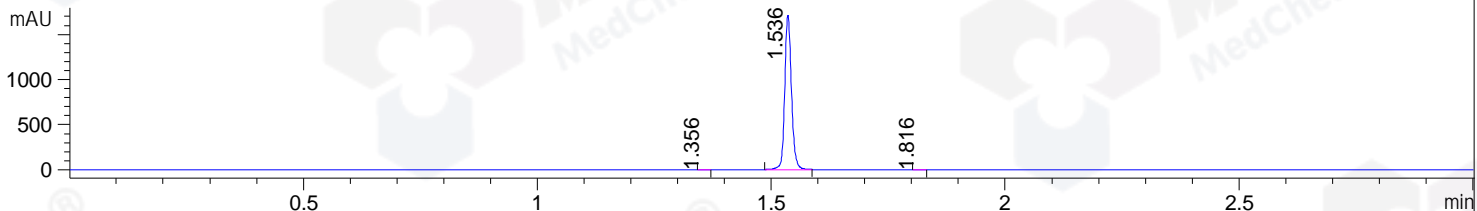
Column :SunFire C18, 4.6*50mm,3.5um A-RP-314

Oven Temperature : 45

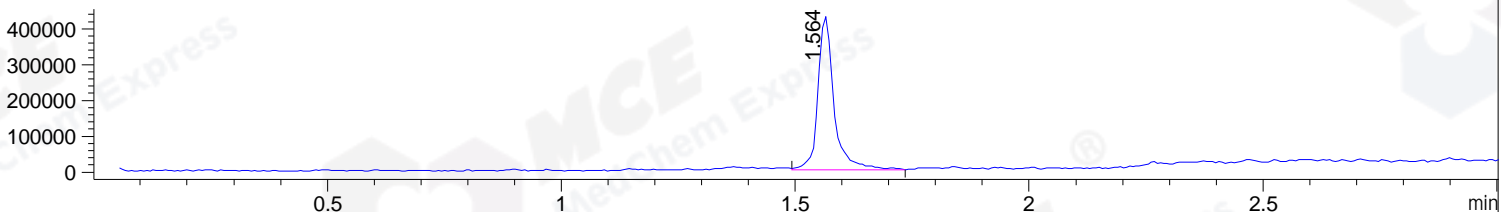
DAD1 B, Sig=214,4 Ref=off



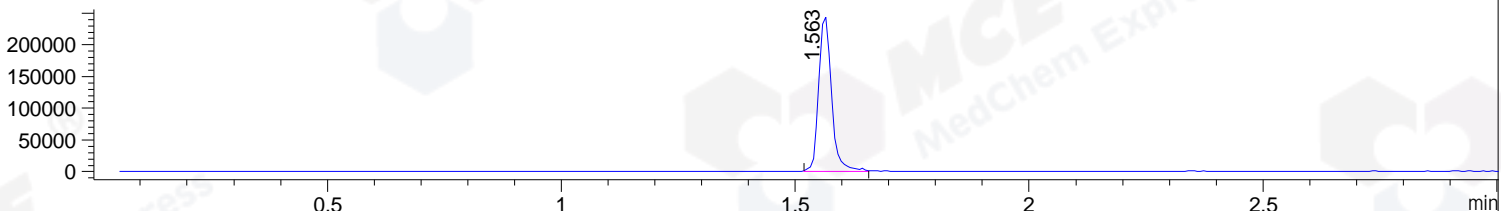
DAD1 C, Sig=254,4 Ref=off



MSD1 TIC, MS File ES-API, Pos, Scan, Frag: 70



Ion 254.1, MSD1 254.1, Target Mass 253.1 +H Positive, EIC=253.8:254.8



Integration Results for DAD1 B, Sig=214,4 Ref=off

RetTim	Width	Area	Height	Area%	MS (+)
1.36	0.01	1.31	2.00	0.10	ND
1.54	0.02	1281.34	1282.87	99.84	254
1.81	0.01	0.73	1.27	0.06	ND

Integration Results for DAD1 C, Sig=254,4 Ref=off

RetTim	Width	Area	Height	Area%	MS (+)
1.36	0.01	1.11	1.52	0.06	ND
1.54	0.02	1720.33	1715.43	99.84	254
1.82	0.02	1.59	1.64	0.09	ND

Integration Results for MSD1 TIC, MS File

RetTim	Width	Area	Height	Area%	MS (+)
1.56	0.04	1021322.88	429508.09	100.00	254

Ret. Time: 1.56

<<<< POSITIVE SPECTRA >>>>

ES-API Positive

