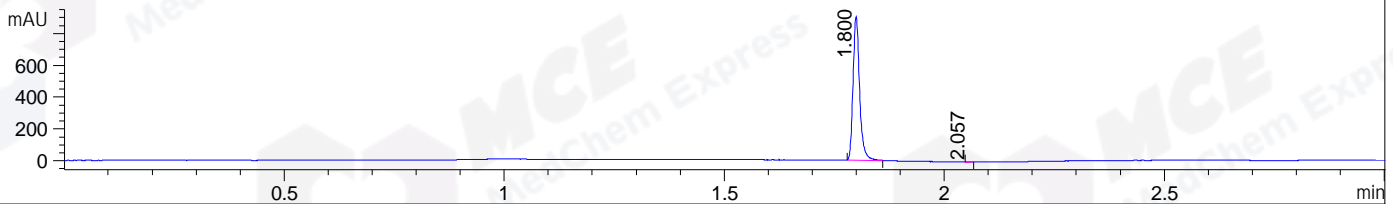
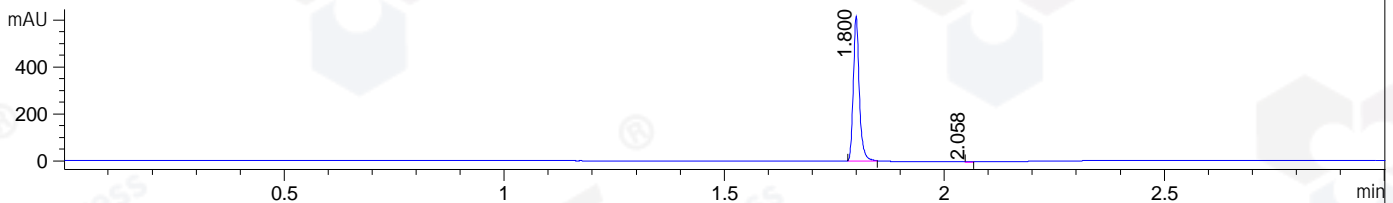


File ..\DATA\2019\20190812\682\CPK2019-809-10986.D Tgt Mass (CHM):
 Injection Date : 12 Aug 19 9:55 am +0800 Seq. Line : 2
 Sample Name : CPK2019-809-10986 Location : P1-E-02
 Acq. Operator : ZJ_1432 Inj : 1
 Spec. Reported : MS Integration Inj Volume : 0.3 ul
 Acq. Method : D:\Chem32\1\data\2019\20190812\682\1-POS-3MIN.M
 Analysis Method : D:\CHEM32\1\DATA\2019\20190812\682\1-POS-3MIN.M
 Catalog No : HY-18010 Batch# 10986
 Method Info : Mobile Phase: A: water(0.01%TFA) B:ACN(0.01%TFA)
 Gradient: 5% to 95%B within 1.3 min
 Flow Rate :1.8ml/min
 Column :SunFire C18, 4.6*50mm,3.5um A-RP-433
 Oven Temperature : 45

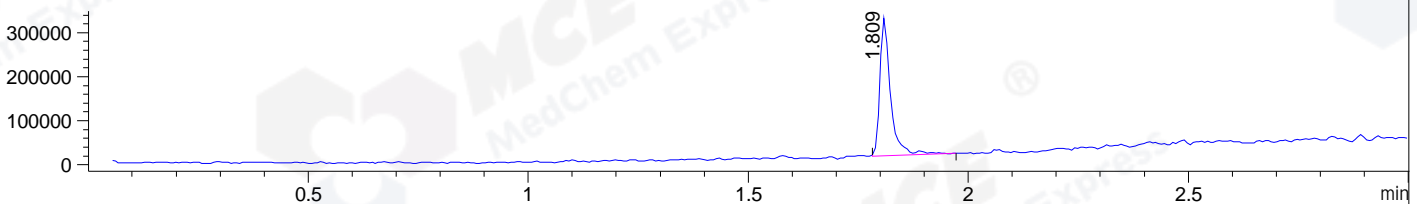
DAD1 B, Sig=214,4 Ref=off



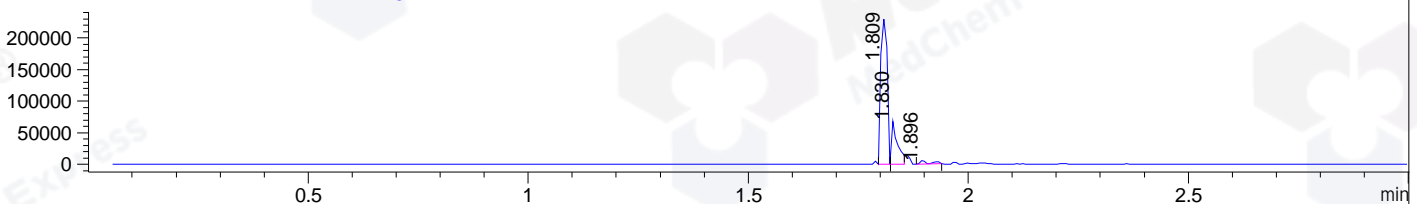
DAD1 C, Sig=254,4 Ref=off



MSD1 TIC, MS File ES-API, Pos, Scan, Frag: 70



Ion 372.4456, MSD1 372.4456, Target Mass 371.4456 +H Positive, EIC=372.15:373.15



Integration Results for DAD1 B, Sig=214,4 Ref=off

RetTim	Width	Area	Height	Area%	MS (+)
1.80	0.02	941.90	904.88	99.68	372
2.06	0.01	3.06	3.76	0.32	159

Integration Results for DAD1 C, Sig=254,4 Ref=off

RetTim	Width	Area	Height	Area%	MS (+)
1.80	0.01	588.09	618.16	99.77	372
2.06	0.01	1.37	1.60	0.23	159

Integration Results for MSD1 TIC, MS File

RetTim	Width	Area	Height	Area%	MS (+)
1.81	0.03	529840.19	313832.91	100.00	372

Ret. Time: 1.81

<<<< POSITIVE SPECTRA >>>>

ES-API Positive

