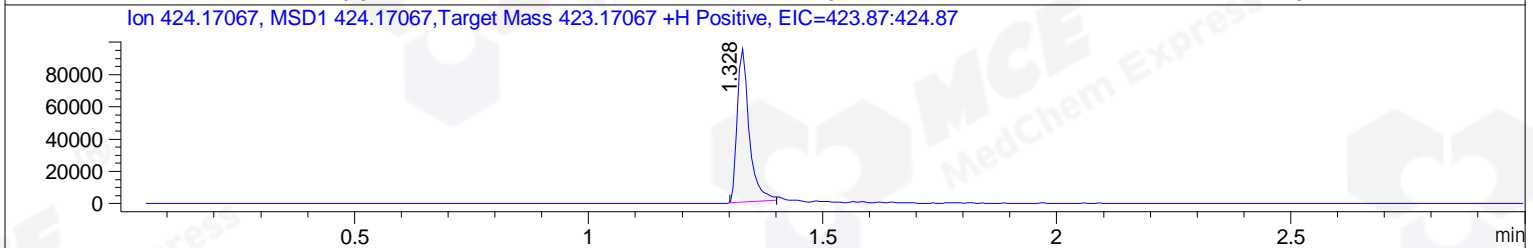
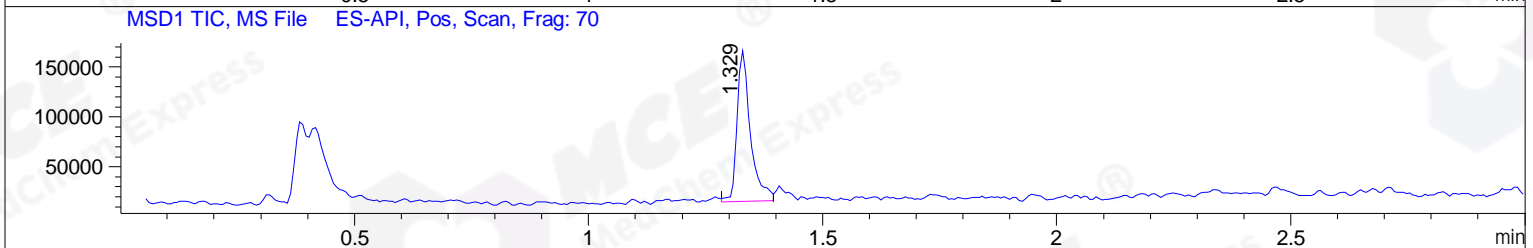
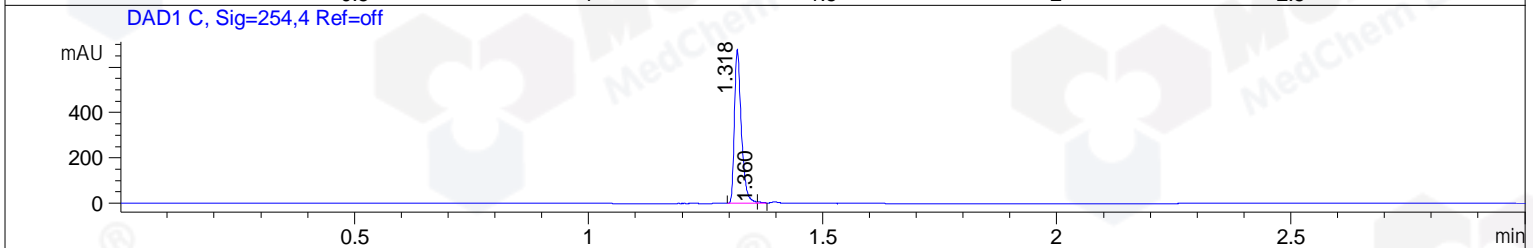
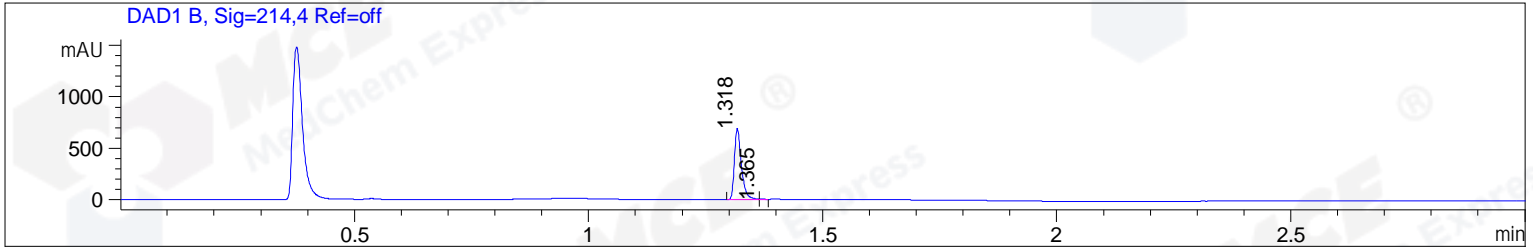


File ..DATA\2019\20191016\733\CPK2019-014-11983\_.D Tgt Mass (CHM):  
 Injection Date : 16 Oct 19 2:28 pm +0800 Seq. Line : 71  
 Sample Name : CPK2019-014-11983 Location : PL-D-07  
 Acq. Operator : ZJ\_1432 Inj : 1  
 Spec. Reported : MS Integration Inj Volume : 0.2 ul  
 Acq. Method : D:\Chem32\1\data\2019\20191016\733\1-POS-3MIN.M  
 Analysis Method : D:\CHEM32\1\DATA\2019\20191016\733\1-POS-3MIN.M  
 Catalog No : HY-18012 Batch#11983  
 Method Info : Mobile Phase: A: water(0.01%TFA) B:ACN(0.01%TFA)  
 Gradient: 5% to 95%B within 1.3 min  
 Flow Rate :1.8ml/min  
 Column :SunFire C18, 4.6\*50mm,3.5um A-RP-433  
 Oven Temperature : 45



Integration Results for DAD1 B, Sig=214,4 Ref=off

RetTim	Width	Area	Height	Area%	MS (+)
1.32	0.02	710.03	691.30	99.69	424
1.36	0.01	2.18	4.51	0.31	130

Integration Results for DAD1 C, Sig=254,4 Ref=off

RetTim	Width	Area	Height	Area%	MS (+)
1.32	0.02	694.37	680.29	99.54	424
1.36	0.01	3.23	5.39	0.46	130

Integration Results for MSD1 TIC, MS File

RetTim	Width	Area	Height	Area%	MS (+)
1.33	0.03	299018.81	151064.09	100.00	424

Ret. Time: 1.33

<<<< POSITIVE SPECTRA >>>>

ES-API Positive

