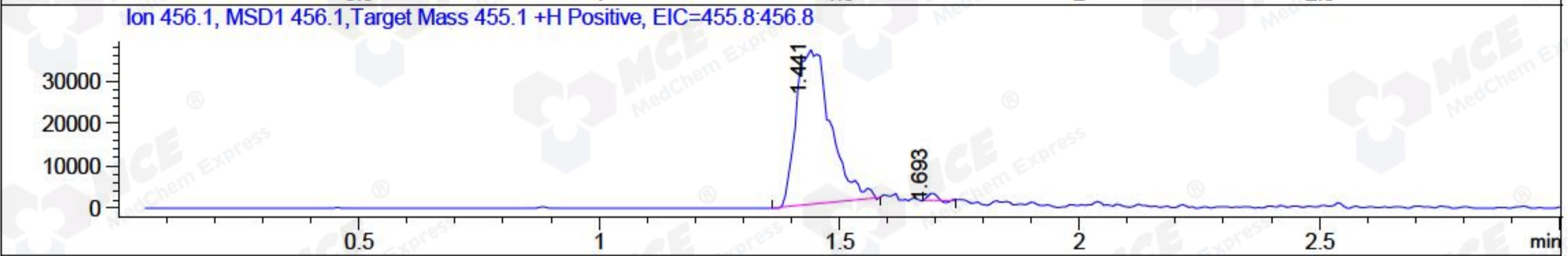
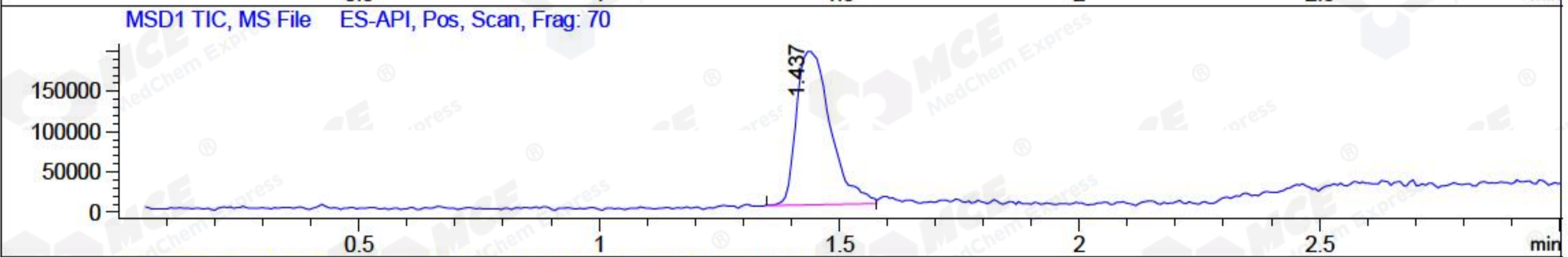
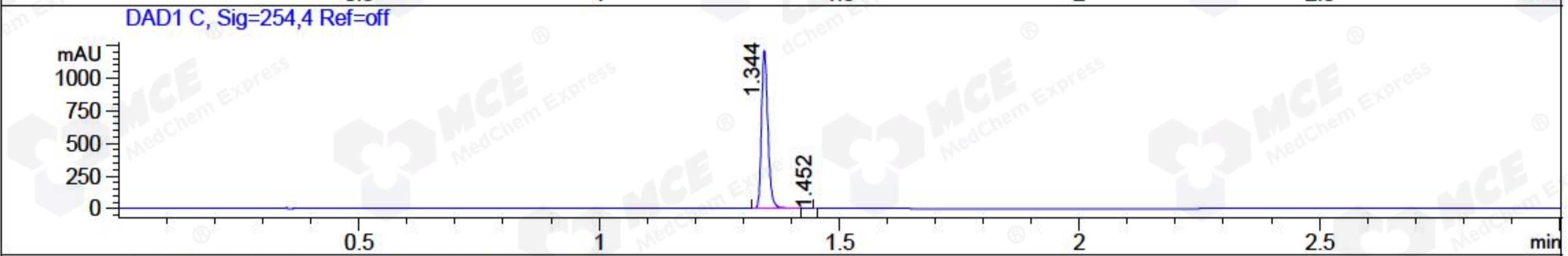
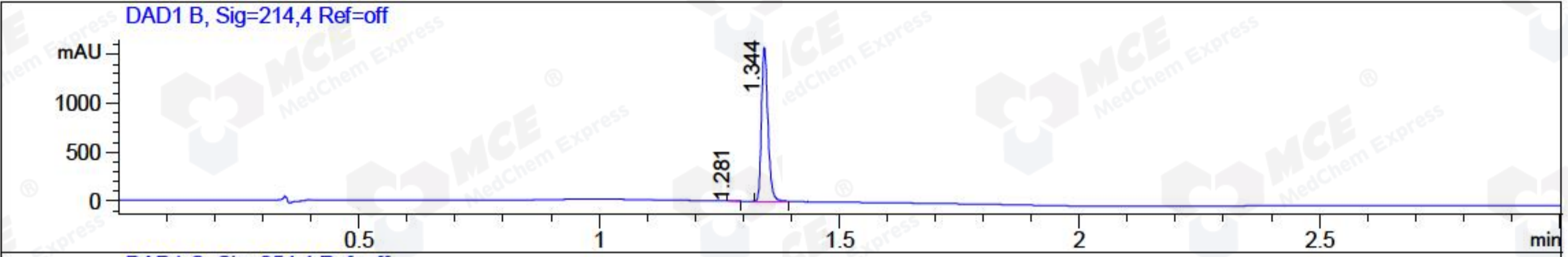


File ..1\DATA\2018\20180904\387\BIZ2018-904-CXL1.D Tgt Mass (CHM):
 Injection Date : 4 Sep 18 3:45 pm +0800 Seq. Line : 2
 Sample Name : BIZ2018-904-CXL1 Location : P1-D-02
 Acq. Operator : LQ_1052 Inj : 1
 Spec. Reported : MS Integration Inj Volume : 1 ul
 Acq. Method : D:\Chem32\1\data\2018\20180904\387\1-POS-3MIN-1.M
 Analysis Method : D:\CHEM32\1\DATA\2018\20180904\387\1-POS-3MIN-1.M
 Catalog No : HY-18161 Batch#32487 A-RP-314
 Method Info : Mobile Phase: A: water(0.01%TFA) B:ACN(0.01%TFA)
 Gradient: 5% to 95%B within 1.3 min
 Flow Rate :1.8ml/min
 Column :SunFire C18, 4.6*50mm,3.5um A-RP-314
 Oven Temperature : 45□



Integration Results for DAD1 B, Sig=214,4 Ref=off

RetTim	Width	Area	Height	Area%	MS (+)
1.28	0.01	2.05	2.34	0.14	ND
1.34	0.01	1462.59	1573.54	99.86	ND

Integration Results for DAD1 C, Sig=254,4 Ref=off

RetTim	Width	Area	Height	Area%	MS (+)
1.34	0.02	1109.17	1211.87	100.00	456
1.45	0.01	0.03	0.08	0.00	456

Integration Results for MSD1 TIC, MS File

RetTim	Width	Area	Height	Area%	MS (+)
1.44	0.08	939469.56	191208.73	100.00	456

Ret. Time: 1.44

<<<< POSITIVE SPECTRA >>>>

ES-API Positive

