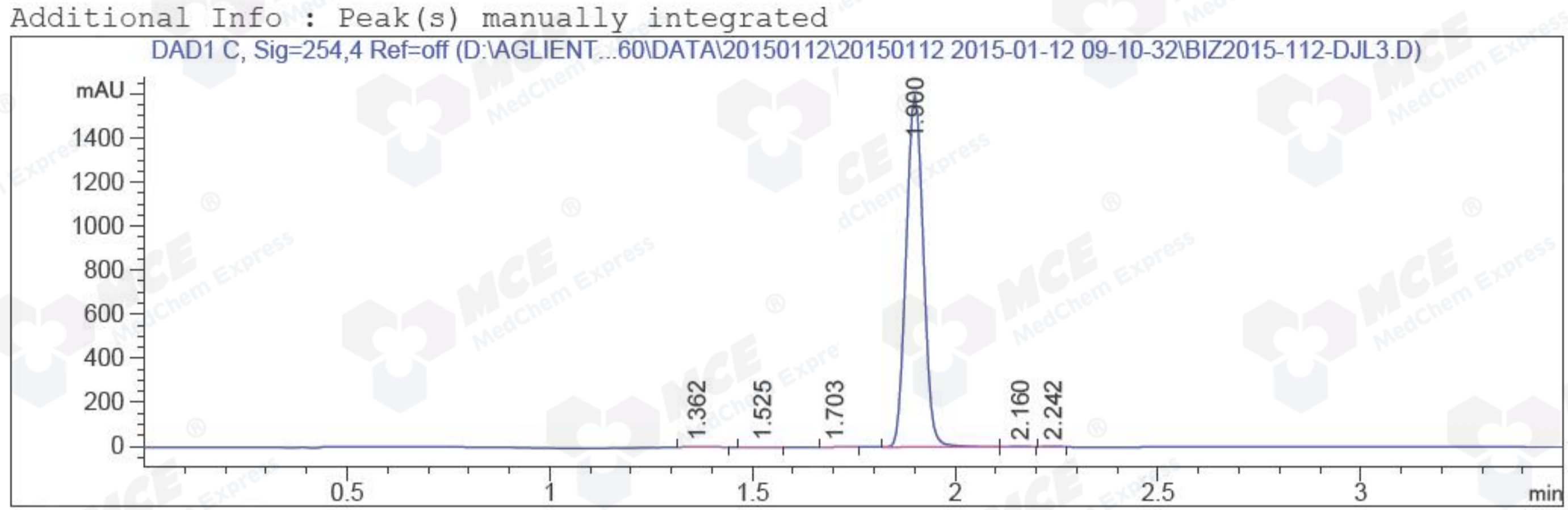


```

=====
Acq. Operator   : Li Shan(LCMS-02)                Seq. Line :   64
Acq. Instrument : HY-LCMS-02                      Location  : Vial 53
Injection Date  : 1/12/2015 3:20:03 PM           Inj       :    1
                                                    Inj Volume: 3.000 µl

Acq. Method    : D:\AGLIENT 1260\DATA\20150112\20150112 2015-01-12 09-10-32\100-1000MS+3MIN(
                0.02%FA).M
Last changed   : 1/12/2015 9:10:32 AM by Li Shan(LCMS-02)
Analysis Method : D:\AGLIENT 1260\DATA\20150108\20150108 2015-01-08 09-25-26\100-1000MS+3MIN(
                0.02%FA).M (Sequence Method)
Last changed   : 1/12/2015 3:53:18 PM by Li Shan(LCMS-02)
                (modified after loading)
Method Info    : Postive,MS:100-1000,Column ID:A-RP-102,40°C

Catalog No     : HY-18163 Batch#14663
                A-RP-32
  
```



=====  
 Area Percent Report  
 =====

```

Sorted By      : Signal
Multiplier     : 1.0000
Dilution      : 1.0000
Do not use Multiplier & Dilution Factor with ISTDs
  
```

Signal 1: DAD1 C, Sig=254,4 Ref=off

Peak #	RetTime [min]	Type	Width [min]	Area [mAU*s]	Height [mAU]	Area %
1	1.362	MM	0.0600	10.86323	3.01904	0.2293
2	1.525	MM	0.0652	1.17646	3.00513e-1	0.0248
3	1.703	MM	0.0473	1.35071	4.75913e-1	0.0285
4	1.900	MM	0.0489	4713.37061	1605.22766	99.4828
5	2.160	MM	0.0435	5.86154	2.24607	0.1237
6	2.242	MM	0.0380	5.25201	2.30138	0.1109

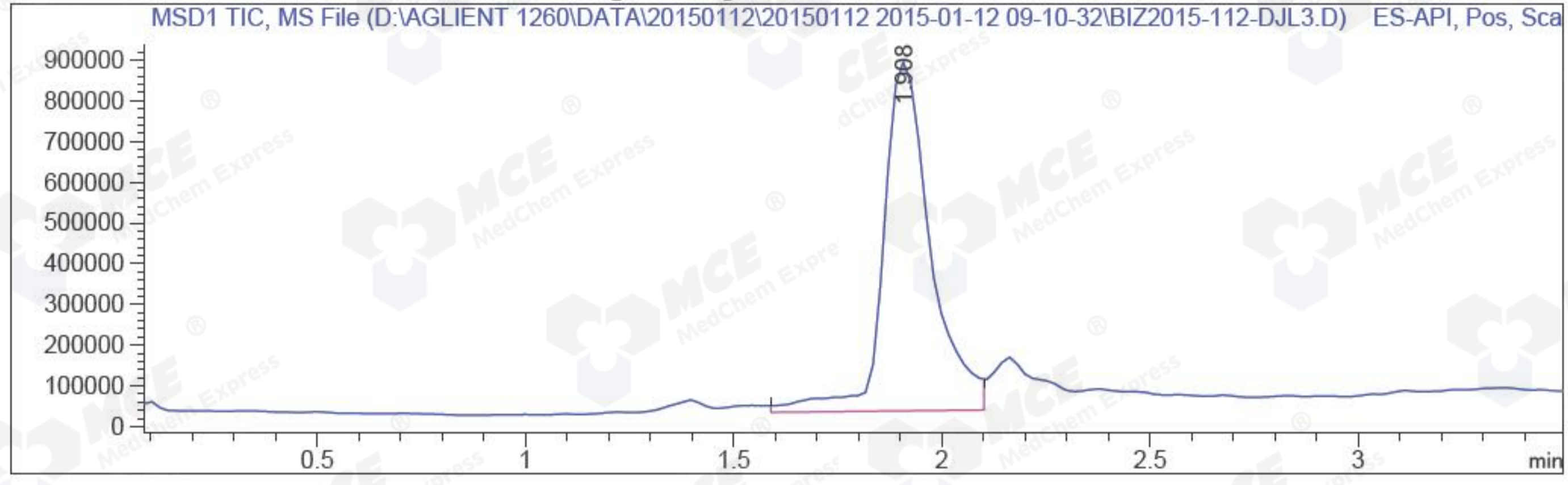
Totals : 4737.87455 1613.57058

=====  
 \*\*\* End of Report \*\*\*

=====

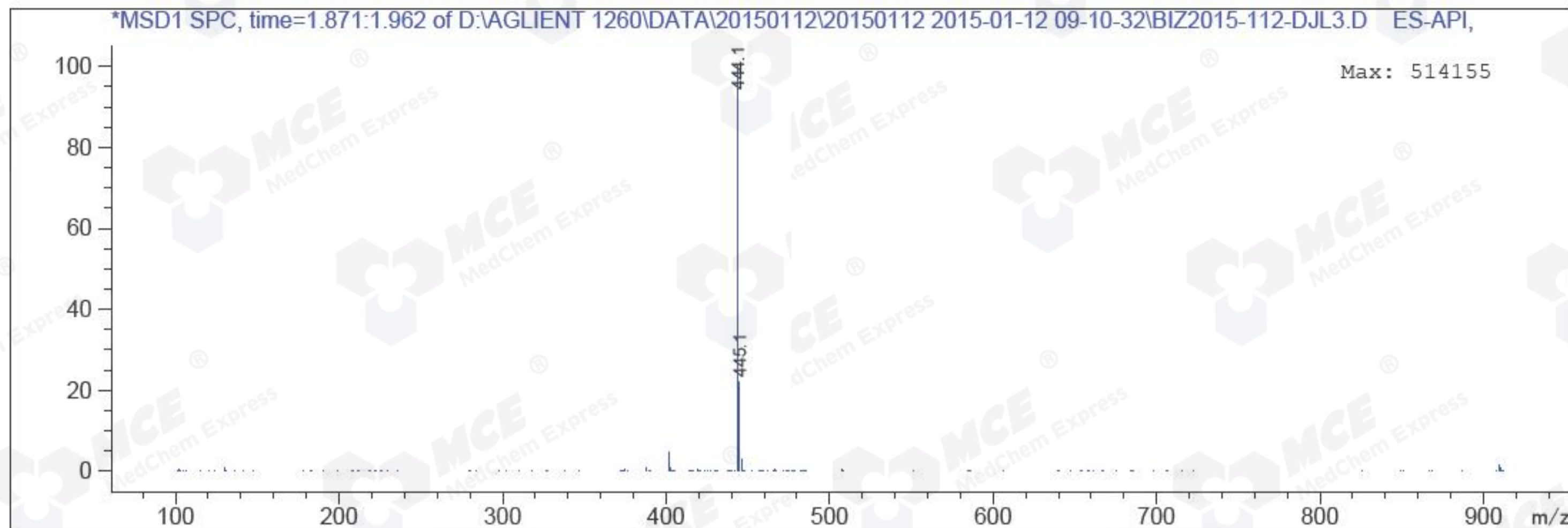
Acq. Operator	: Li Shan(LCMS-02)	Seq. Line	: 64
Acq. Instrument	: HY-LCMS-02	Location	: Vial 53
Injection Date	: 1/12/2015 3:20:03 PM	Inj	: 1
		Inj Volume	: 3.000 µl
Acq. Method	: D:\AGLIENT 1260\DATA\20150112\20150112 2015-01-12 09-10-32\100-1000MS+3MIN(0.02%FA).M		
Last changed	: 1/12/2015 9:10:32 AM by Li Shan(LCMS-02)		
Analysis Method	: D:\AGLIENT 1260\DATA\20150108\20150108 2015-01-08 09-25-26\100-1000MS+3MIN(0.02%FA).M (Sequence Method)		
Last changed	: 1/12/2015 3:54:31 PM by Li Shan(LCMS-02) (modified after loading)		
Method Info	: Postive,MS:100-1000,Column ID:A-RP-102,40°C		
Catalog No	: HY-18163 Batch#14663 A-RP-32		

Additional Info : Peak(s) manually integrated



MS Signal: MSD1 TIC, MS File, ES-API, Pos, Scan, Frag: 50  
Spectra averaged over upper half of peaks.  
Noise Cutoff: 1000 counts.  
Reportable Ion Abundance: > 10%.

Retention Time (MS)	MS Area	Mol. Weight or Ion
1.908	6794508	445.10 I
		444.10 I



\*\*\* End of Report \*\*\*