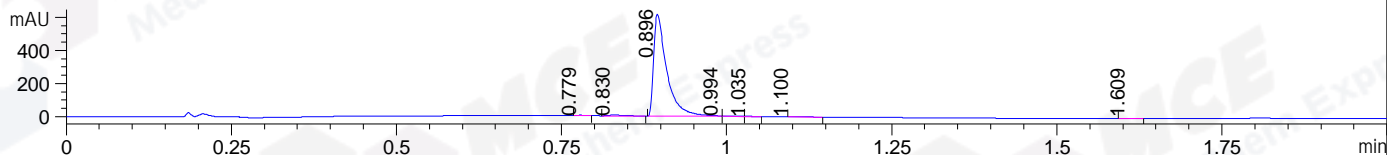
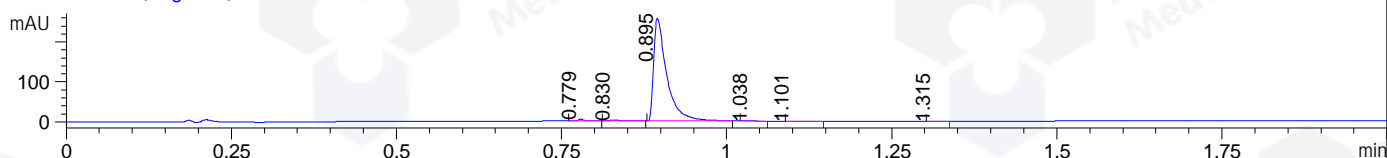


File ..0200612 2020-06-12 15-38-00\XLJ6358-008-1.D Tgt Mass (CHM):  
Injection Date : 12 Jun 20 3:58 pm +0800 Seq. Line : 6  
Sample Name : XLJ6358-008-1 Location : P1-D-07  
Acq. Operator : SYSTEM Inj : 1  
Spec. Reported : MS Integration Inj Volume : 0.2 ul  
Acq. Method : D:\LCMS03\Data\20200612\20200612 2020-06-12 15-38-00\1-POS-UPLC2.0MIN(0.8ML) .1  
Analysis Method : D:\LCMS03\Data\20200612\20200612 2020-06-12 15-38-00\1-POS-UPLC2.0MIN(0.8ML) .1  
Catalog No : HY-18174E  
Method Info : Mobile Phase: A: water(0.01%TFA) B:ACN(0.01%TFA)  
Gradient: 5% to 95%B within 0.6 min  
Flow Rate :0.8ml/min  
Column :Poroshell 120 EC- C18, 2.1\*50mm,1.9um A-RP-530  
Oven Temperature : 45C

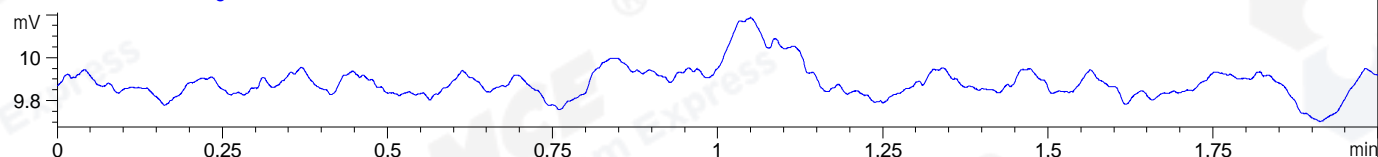
DAD1 A, Sig=214,4 Ref=off



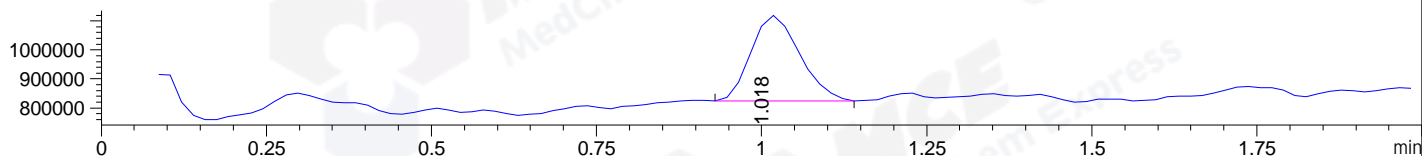
DAD1 B, Sig=254,4 Ref=off



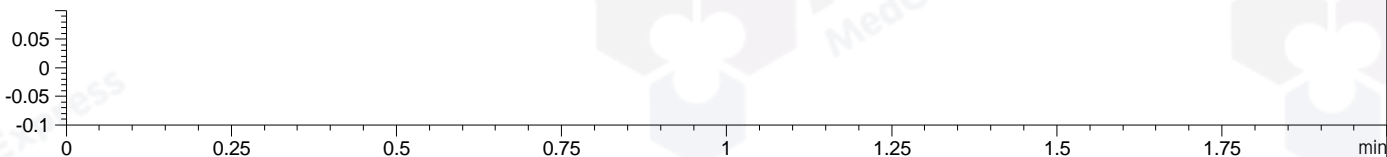
ELS1 A, ELSD Signal



MSD1 TIC, MS File ES-API, Pos, Scan, Frag: 70



Ion 1, MSD1 1, Target Mass 0 +H Positive, EIC=0.7:1.7



Integration Results for DAD1 A, Sig=214,4 Ref=off

RetTim	Width	Area	Height	Area%	MS (+)
0.78	0.01	1.97	4.02	0.23	145
0.83	0.02	7.81	5.56	0.90	145
0.90	0.02	849.66	614.98	98.35	145
0.99	0.02	2.32	2.23	0.27	145
1.04	0.01	0.52	0.61	0.06	145
1.10	0.04	0.97	0.33	0.11	145
1.61	0.01	0.68	0.69	0.08	145

Integration Results for DAD1 B, Sig=254,4 Ref=off

RetTim	Width	Area	Height	Area%	MS (+)
0.78	0.01	2.52	4.52	0.70	145
0.83	0.02	2.72	2.04	0.75	145
0.90	0.02	354.88	257.47	98.28	145
1.04	0.02	0.21	0.18	0.06	145
1.10	0.02	0.53	0.33	0.15	145
1.32	0.01	0.23	0.26	0.06	145

## Integration Results for ELS1 A, ELSD Signal

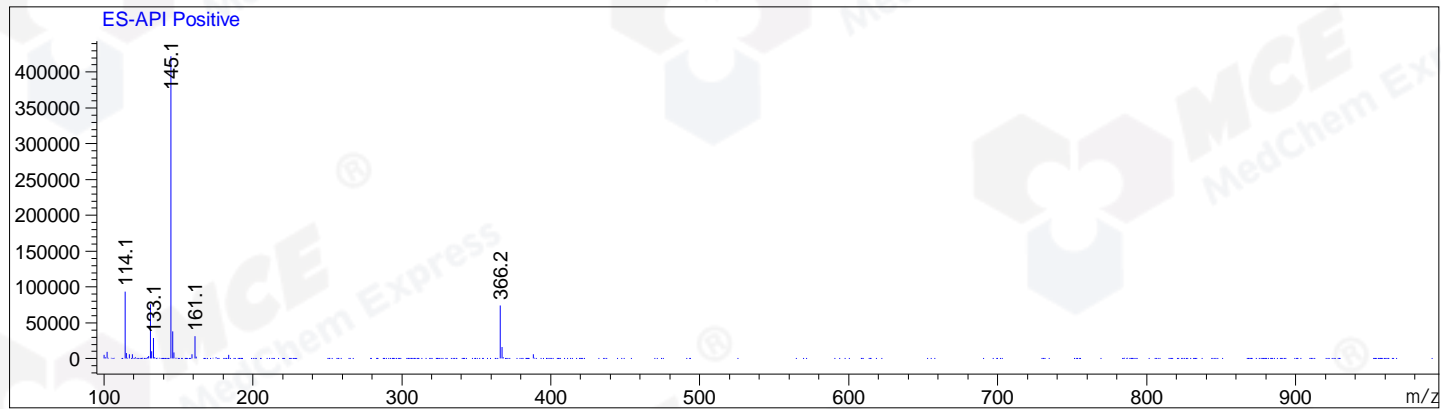
RetTim	Width	Area	Height	Area%	MS (+)
--------	-------	------	--------	-------	--------

## Integration Results for MSD1 TIC, MS File

RetTim	Width	Area	Height	Area%	MS (+)
1.02	0.09	1509514.25	294562.44	100.00	145

Ret. Time: 1.02

<<<< POSITIVE SPECTRA >>>>



\*\*\* End of Report \*\*\*