

File ..\DATA\2019\20190505\560\CPK2019-430-21169.D Tgt Mass (CHM):

Injection Date : 5 May 19 2:38 pm +0800 Seq. Line : 20

Sample Name : CPK2019-430-21169 Location : P1-B-03

Acq. Operator : LQ_1052 Inj : 1

Spec. Reported : MS Integration Inj Volume : 1 ul

Acq. Method : D:\Chem32\1\data\2019\20190505\560\1-POS-3MIN-1.M

Analysis Method : D:\CHEM32\1\DATA\2019\20190505\560\1-POS-3MIN-1.M

Catalog No : HY-18282 Batch#21169

Method Info : Mobile Phase: A: water(0.01%TFA) B:ACN(0.01%TFA)

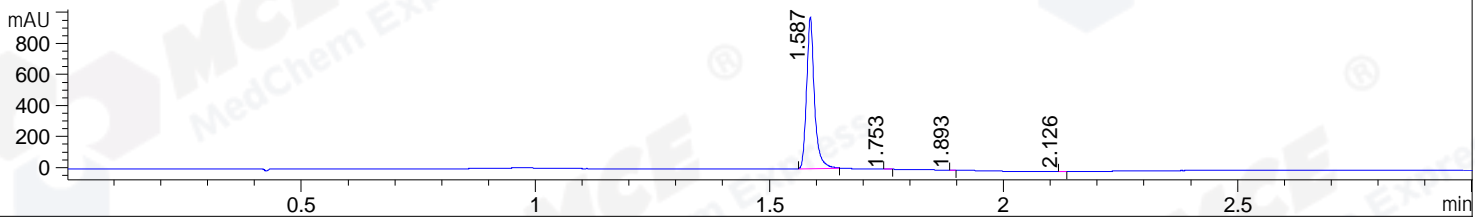
Gradient: 5% to 95%B within 1.3 min

Flow Rate :1.8ml/min

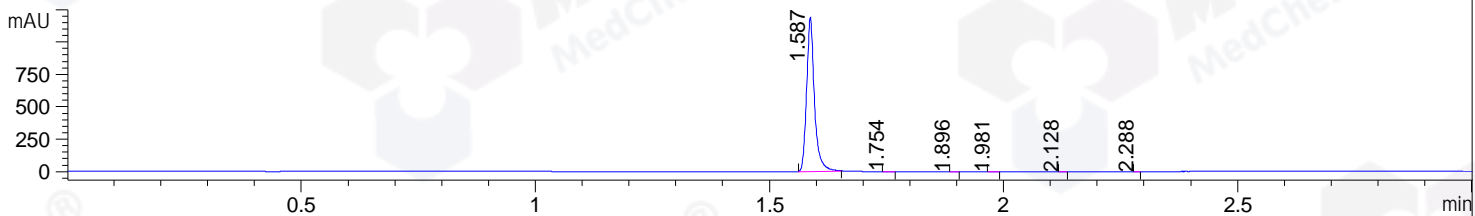
Column :SunFire C18, 4.6*50mm,3.5um A-RP-322

Oven Temperature : 45

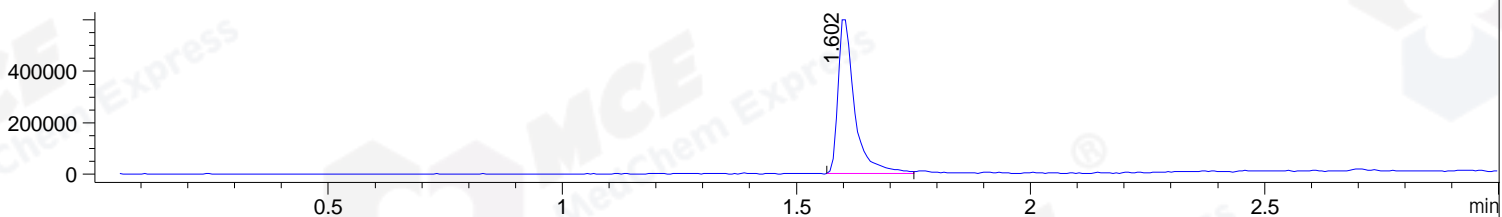
DAD1 B, Sig=214,4 Ref=off



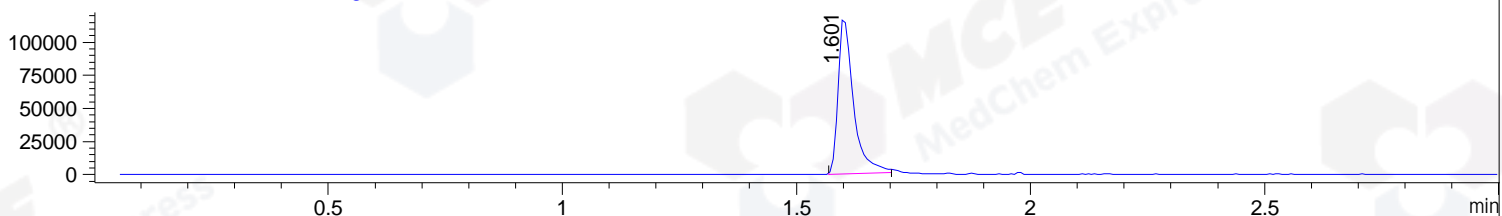
DAD1 C, Sig=254,4 Ref=off



MSD1 TIC, MS File ES-API, Pos, Scan, Frag: 70



Ion 440.6, MSD1 440.6, Target Mass 439.6 +H Positive, EIC=440.3:441.3



Integration Results for DAD1 B, Sig=214,4 Ref=off

RetTim	Width	Area	Height	Area%	MS (+)
1.59	0.02	1144.41	978.73	99.89	440
1.75	0.01	0.58	0.85	0.05	440
1.89	0.01	0.30	0.69	0.03	440
2.13	0.01	0.35	0.51	0.03	ND

Integration Results for DAD1 C, Sig=254,4 Ref=off

RetTim	Width	Area	Height	Area%	MS (+)
1.59	0.02	1394.15	1191.34	99.85	440
1.75	0.01	0.96	1.09	0.07	440
1.90	0.01	0.27	0.35	0.02	440
1.98	0.02	0.51	0.53	0.04	ND
2.13	0.01	0.25	0.37	0.02	ND
2.29	0.01	0.12	0.19	0.01	ND

Integration Results for MSD1 TIC, MS File

RetTim	Width	Area	Height	Area%	MS (+)
--------	-------	------	--------	-------	--------

1.60 0.04 1483823.13 609178.69 100.00 440

Ret. Time: 1.60

<<<< POSITIVE SPECTRA >>>>

ES-API Positive

