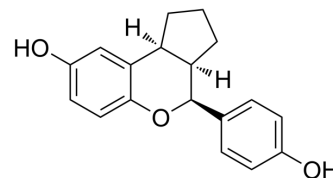


rel-Erteberel

Cat. No.:	HY-18295A
CAS No.:	533883-77-1
Molecular Formula:	C ₁₈ H ₁₈ O ₃
Molecular Weight:	282.33
Target:	Estrogen Receptor/ERR
Pathway:	Vitamin D Related/Nuclear Receptor
Storage:	Please store the product under the recommended conditions in the Certificate of Analysis.



BIOLOGICAL ACTIVITY

Description	rel-Erteberel is rel isomer of Erteberel (HY-18295). Erteberel is a potent and selective estrogen receptor beta (ER β) agonist with K _i and EC ₅₀ of 1.54 nM and 3.61 nM, respectively. Erteberel has anti-tumor activities ^{[1][2]} .	
IC ₅₀ & Target	ER β 1.54 nM (IC ₅₀)	ER β 3.61 nM (EC ₅₀)

REFERENCES

[1]. Zhao L, et al. Pharmacological activation of estrogen receptor beta augments innate immunity to suppress cancer metastasis. Proc Natl Acad Sci U S A. 2018 Apr 17;115(16):E3673-E3681.

[2]. Sareddy GR, et al. Selective Estrogen Receptor β Agonist LY500307 as a Novel Therapeutic Agent for Glioblastoma. Sci Rep. 2016 Apr 29;6:24185.

Caution: Product has not been fully validated for medical applications. For research use only.

Tel: 609-228-6898

Fax: 609-228-5909

E-mail: tech@MedChemExpress.com

Address: 1 Deer Park Dr, Suite Q, Monmouth Junction, NJ 08852, USA