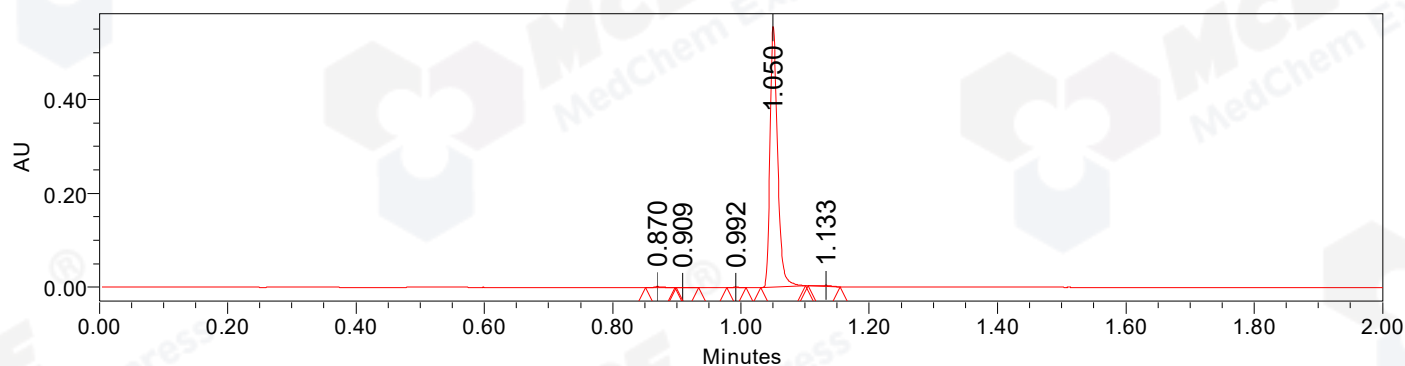


## SAMPLE INFORMATION

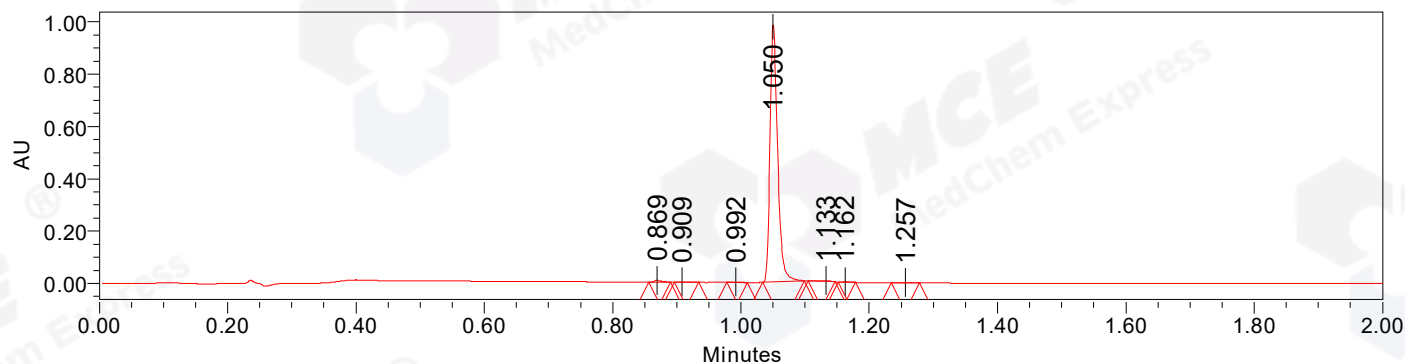
Sample Name:	CPK2023-213	Acquired By:	LY
CAS NO.:	212844-53-6	Date Acquired:	2/13/2023 8:09:31 PM CST
Vial:	2:C,2	Acq. Method Set:	1_POS_2MIN
Injection #:	1	Date Processed:	2/14/2023 10:36:58 AM CST,
Injection Volume:	0.30 ul	Processing Method:	PDA_01, MS_scan
Run Time:	2.8 Minutes	Channel Name:	PDA Ch1 214nm@4.8nm, MS TIC,
Sample Set Name:	20230213	Column Name:	A-RP-985

### Auto-Scaled Chromatogram



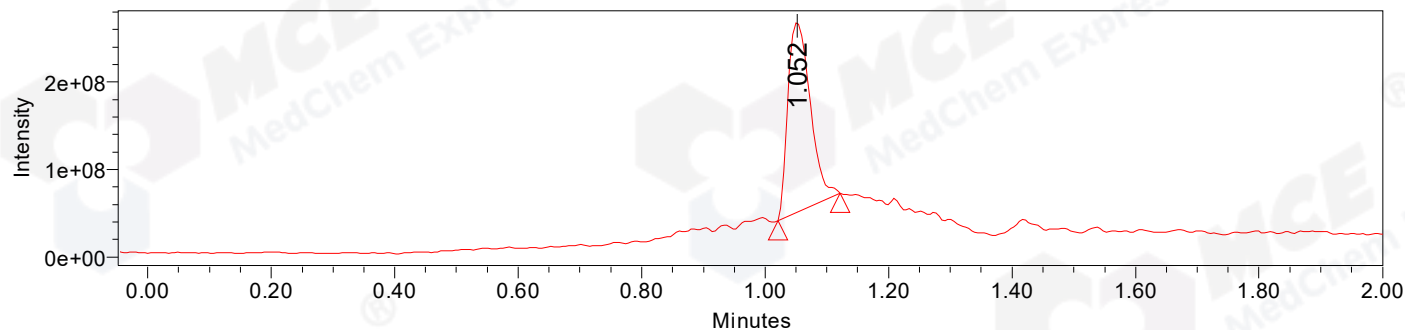
Processed Channel Descr. PDA Ch2 254nm@4.8nm

### Auto-Scaled Chromatogram



Processed Channel Descr. PDA Ch1 214nm@4.8nm

### Auto-Scaled Chromatogram



Processed Channel Descr. ACQ-SQD2 1: MS Scan MS TIC, Smoothed by 9 point Savitzky-Golay Filter., Time offset by -0.053 mins. (1: 150.00-1000.00 ES+, Centroid, CV=30)

Peak Results  
Channel Name: PDA Ch2 254nm@4.8nm

	RT	Width (sec)	Area	Height	% Area	Base Peak (Combined) (m/z)	Channel Name
1	0.870	2.700	2617	2905	0.56	153.02	PDA Ch2 254nm@4.8nm
2	0.909	2.100	571	496	0.12	298.07	PDA Ch2 254nm@4.8nm
3	0.992	1.750	800	1102	0.17	153.02	PDA Ch2 254nm@4.8nm
4	1.050	4.200	459956	555518	98.58	152.00	PDA Ch2 254nm@4.8nm
5	1.133	3.000	2644	2093	0.57	389.07	PDA Ch2 254nm@4.8nm

Peak Results  
Channel Name: PDA Ch1 214nm@4.8nm

	RT	Width (sec)	Area	Height	% Area	Base Peak (Combined) (m/z)	Channel Name
1	0.869	2.000	5332	6933	0.64	153.01	PDA Ch1 214nm@4.8nm
2	0.909	2.300	985	917	0.12	298.07	PDA Ch1 214nm@4.8nm
3	0.992	1.900	1291	1878	0.16	152.99	PDA Ch1 214nm@4.8nm
4	1.050	3.900	813845	984358	98.30	152.02	PDA Ch1 214nm@4.8nm
5	1.133	2.500	4101	3366	0.50	389.07	PDA Ch1 214nm@4.8nm
6	1.162	1.600	961	1441	0.12	152.95	PDA Ch1 214nm@4.8nm
7	1.257	2.650	1397	1354	0.17	151.98	PDA Ch1 214nm@4.8nm

Peak Results  
Channel Name: MS TIC

	RT	Width (sec)	Area	Height	% Area	Base Peak (Combined) (m/z)	Channel Name
1	1.052	6.093	550887843	218887558	100.00	389.09	MS TIC

Match Plot

