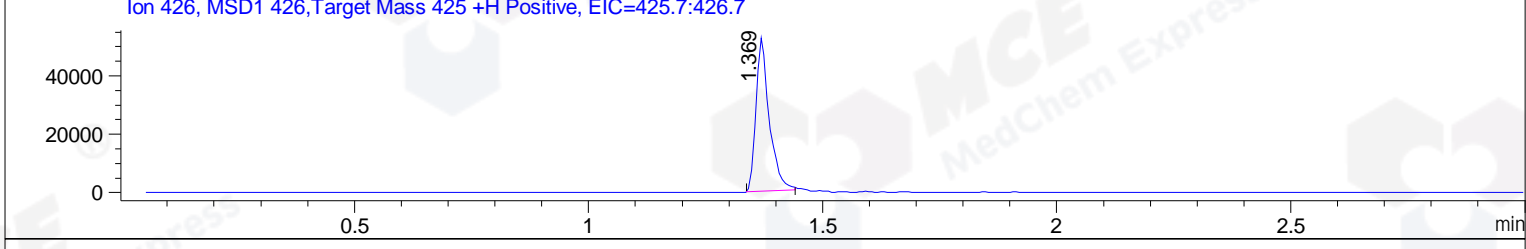
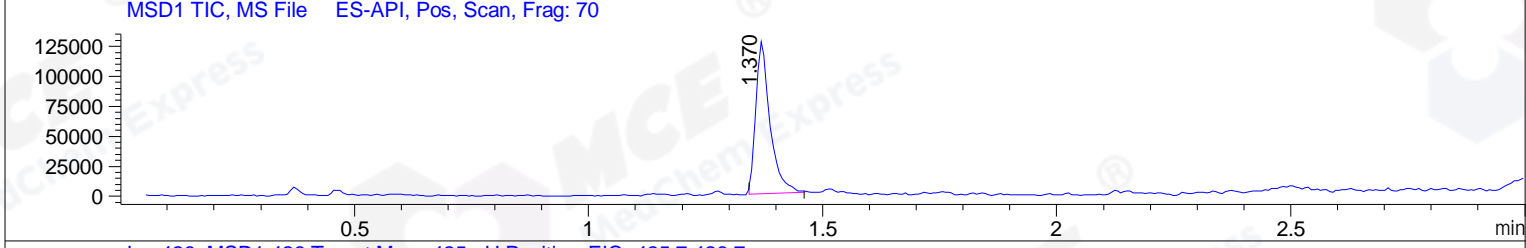
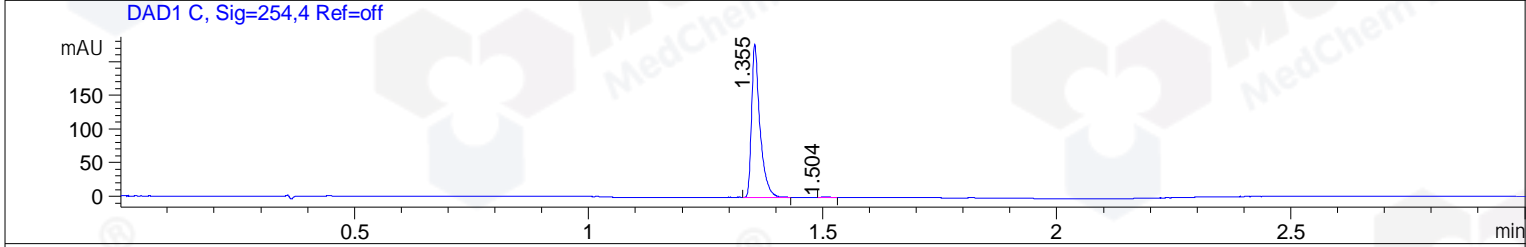
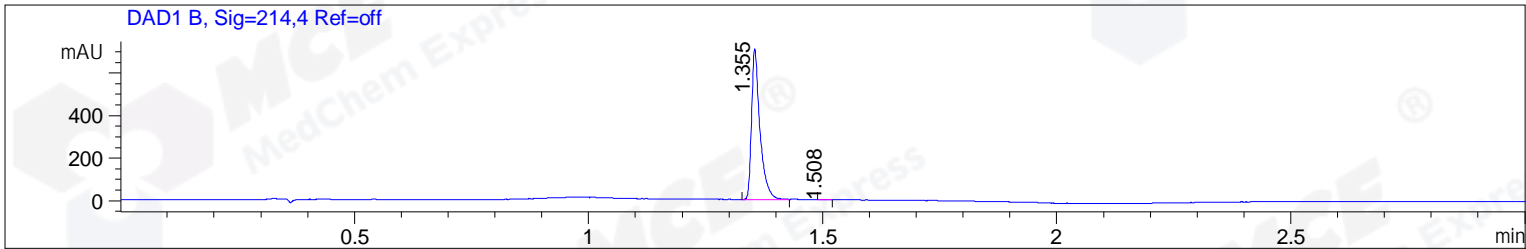


File ..\DATA\2019\20191228\796\CPK2019-D26-12893.D Tgt Mass (CHM):
 Injection Date : 28 Dec 19 11:12 am +0800 Seq. Line : 30
 Sample Name : CPK2019-D26-12893 Location : P1-B-06
 Acq. Operator : ZJ_1432 Inj : 1
 Spec. Reported : MS Integration Inj Volume : 1 ul
 Acq. Method : D:\Chem32\1\data\2019\20191228\796\1-POS-3MIN.M
 Analysis Method : D:\CHEM32\1\DATA\2019\20191228\796\1-POS-3MIN.M
 Catalog No : HY-18300 Batch# 12893
 Method Info : Mobile Phase: A: water(0.01%TFA) B:ACN(0.01%TFA)
 Gradient: 5% to 95%B within 1.3 min
 Flow Rate :1.8ml/min
 Column :SunFire C18, 4.6*50mm,3.5um A-RP-433
 Oven Temperature : 45



Integration Results for DAD1 B, Sig=214,4 Ref=off

RetTim	Width	Area	Height	Area%	MS (+)
1.35	0.02	879.51	708.79	99.83	426
1.51	0.02	1.49	1.19	0.17	ND

Integration Results for DAD1 C, Sig=254,4 Ref=off

RetTim	Width	Area	Height	Area%	MS (+)
1.36	0.02	282.60	227.78	99.58	426
1.50	0.02	1.20	1.08	0.42	ND

Integration Results for MSD1 TIC, MS File

RetTim	Width	Area	Height	Area%	MS (+)
1.37	0.03	269902.31	127406.38	100.00	426

Ret. Time: 1.37

<<<< POSITIVE SPECTRA >>>>

ES-API Positive

