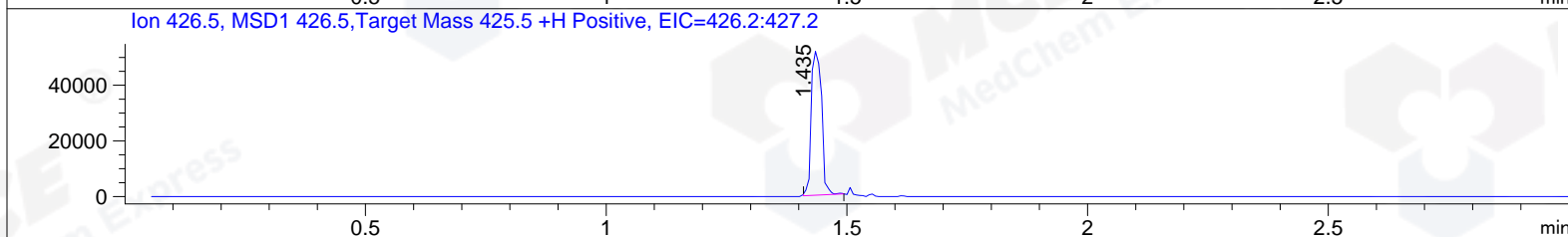
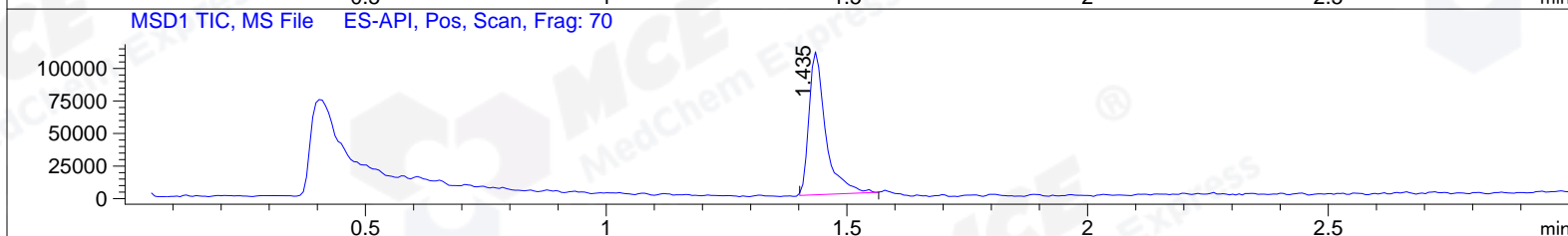
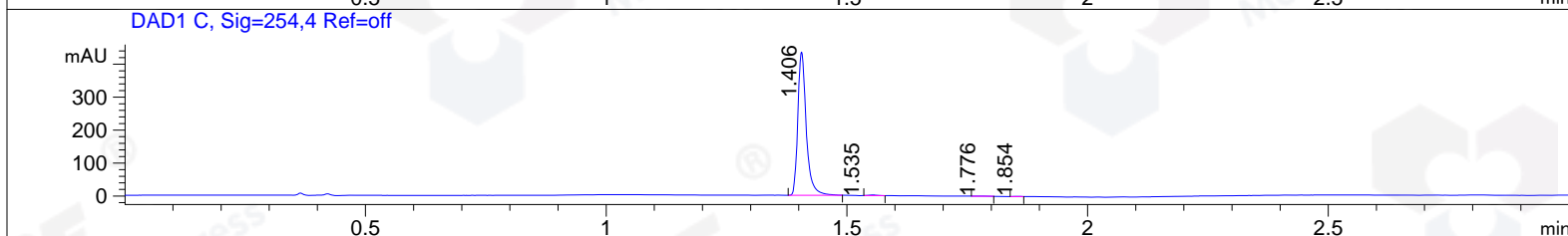
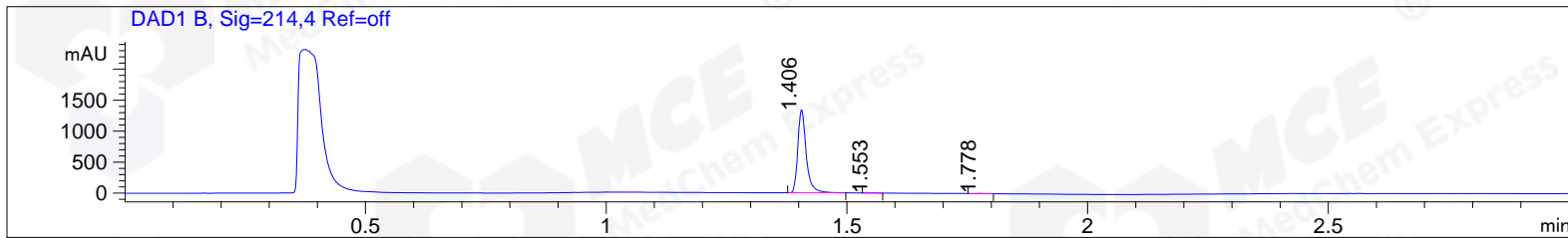


File ..718 2017-07-18 08-51-08\CPK2017-714-12893.D Tgt Mass (CHM):  
 Injection Date : 18 Jul 17 2:13 pm +0800 Seq. Line : 65  
 Sample Name : CPK2017-714-12893 Location : P1-A-04  
 Acq. Operator : ZLJ\_587 Inj : 1  
 Spec. Reported : MS Integration Inj Volume : 1 ul  
 Acq. Method : D:\chem32\1\DATA\20170718\20170718 2017-07-18 08-51-08\1-POS-3MIN.M  
 Analysis Method : D:\CHEM32\1\DATA\20170718\20170718 2017-07-18 08-51-08\1-POS-3MIN.M  
 Catalog No : HY-18300 Batch#12893 A-RP-186  
 Method Info : Mobile Phase: A: water(0.01%TFA) B:ACN(0.01%TFA)  
 Gradient: 5% to 95%B within 1.3 min  
 Flow Rate :1.8ml/min  
 Column :SunFire C18, 4.6\*50mm,3.5um A-RP-186  
 Oven Temperature : 45C



Integration Results for DAD1 B, Sig=214,4 Ref=off

RetTim	Width	Area	Height	Area%	MS(+)
1.41	0.02	1625.74	1339.00	99.64	426
1.55	0.02	2.56	2.70	0.16	448
1.78	0.02	3.26	2.21	0.20	ND

Integration Results for DAD1 C, Sig=254,4 Ref=off

RetTim	Width	Area	Height	Area%	MS(+)
1.41	0.02	526.24	434.90	99.19	426
1.54	0.02	2.66	0.32	0.50	448
1.78	0.02	0.88	0.68	0.17	ND
1.85	0.02	0.76	0.67	0.14	ND

Integration Results for MSD1 TIC, MS File

RetTim	Width	Area	Height	Area%	MS(+)
1.43	0.04	265206.94	109897.06	100.00	426

Ret. Time: 1.43

<<<< POSITIVE SPECTRA >>>>

