

File ..\Data\20190213\20190214\CPK2019-214-20643.D Tgt Mass (CHM):

Injection Date : 14 Feb 19 5:00 pm +0800 Seq. Line : 99

Sample Name : CPK2019-214-20643 Location : P2-B-07

Acq. Operator : SYSTEM Inj : 1

Spec. Reported : MS Integration Inj Volume : 1 ul

Acq. Method : D:\LCMS03\Data\20190213\20190214\1-POS-3MIN.M

Analysis Method : D:\LCMS03\Data\20190213\20190214\1-POS-3MIN.M

Catalog No : HY-18305 Batch#20643

Method Info : Mobile Phase: A: water(0.01%TFA) B:ACN(0.01%TFA)

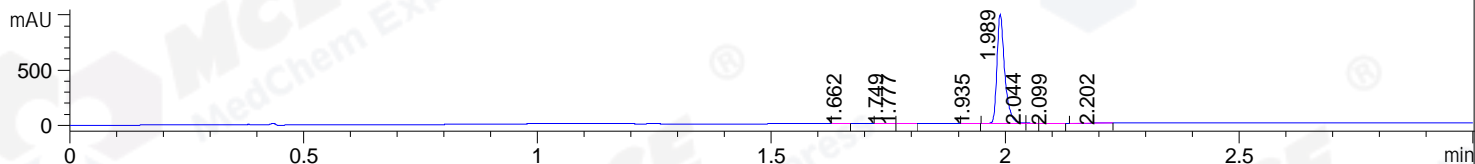
Gradient: 5% to 95%B within 1.3 min

Flow Rate :1.8ml/min

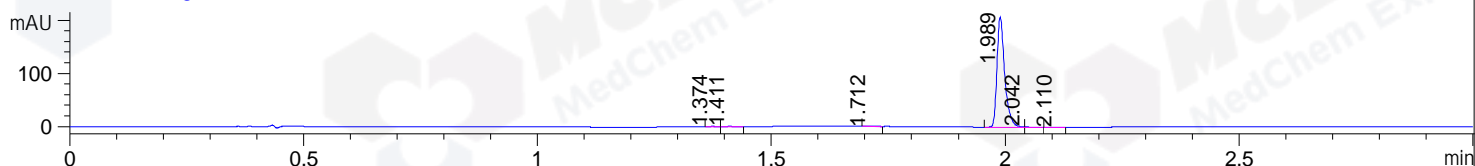
Column :SunFire C18, 4.6*50mm,3.5um A-RP-392

Oven Temperature : 45C

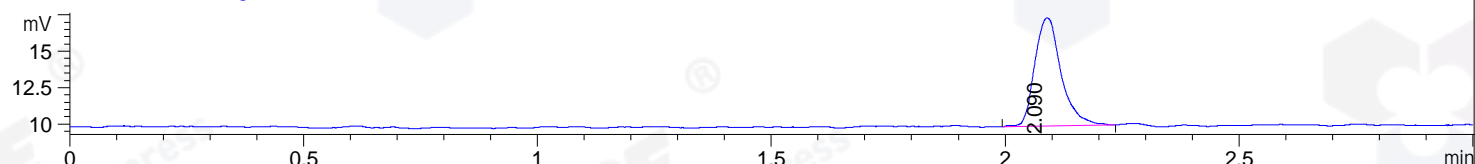
DAD1 A, Sig=214,4 Ref=off



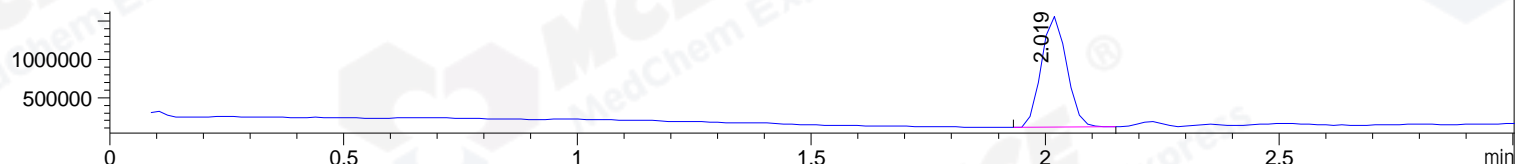
DAD1 B, Sig=254,4 Ref=off



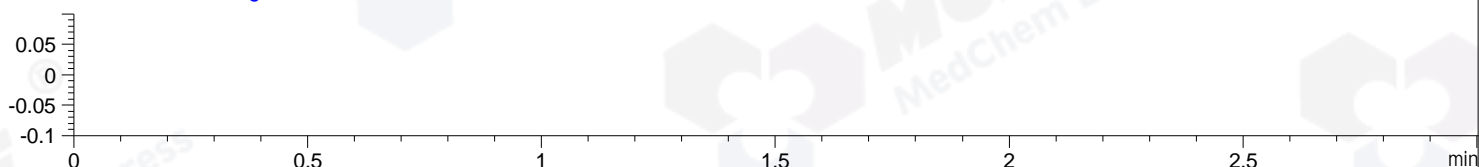
ELS1 A, ELSD Signal



MSD1 TIC, MS File ES-API, Pos, Scan, Frag: 70



Ion 1, MSD1 1, Target Mass 0 +H Positive, EIC=0.7:1.7



Integration Results for DAD1 A, Sig=214,4 Ref=off

RetTim	Width	Area	Height	Area%	MS (+)
1.66	0.03	0.30	0.16	0.03	102
1.75	0.02	0.94	0.79	0.08	102
1.78	0.01	0.23	0.25	0.02	102
1.94	0.02	0.29	0.21	0.03	114
1.99	0.02	1128.30	985.35	99.35	431
2.04	0.01	2.11	3.06	0.19	431
2.10	0.02	1.23	0.88	0.11	114
2.20	0.04	2.25	0.78	0.20	115

Integration Results for DAD1 B, Sig=254,4 Ref=off

RetTim	Width	Area	Height	Area%	MS (+)
1.37	0.01	0.56	0.67	0.23	102
1.41	0.02	0.49	0.38	0.20	102
1.71	0.02	0.22	0.17	0.09	102
1.99	0.02	238.42	206.93	99.13	431
2.04	0.02	0.73	0.80	0.30	431
2.11	0.02	0.11	0.08	0.04	114

Integration Results for ELS1 A, ELSD Signal

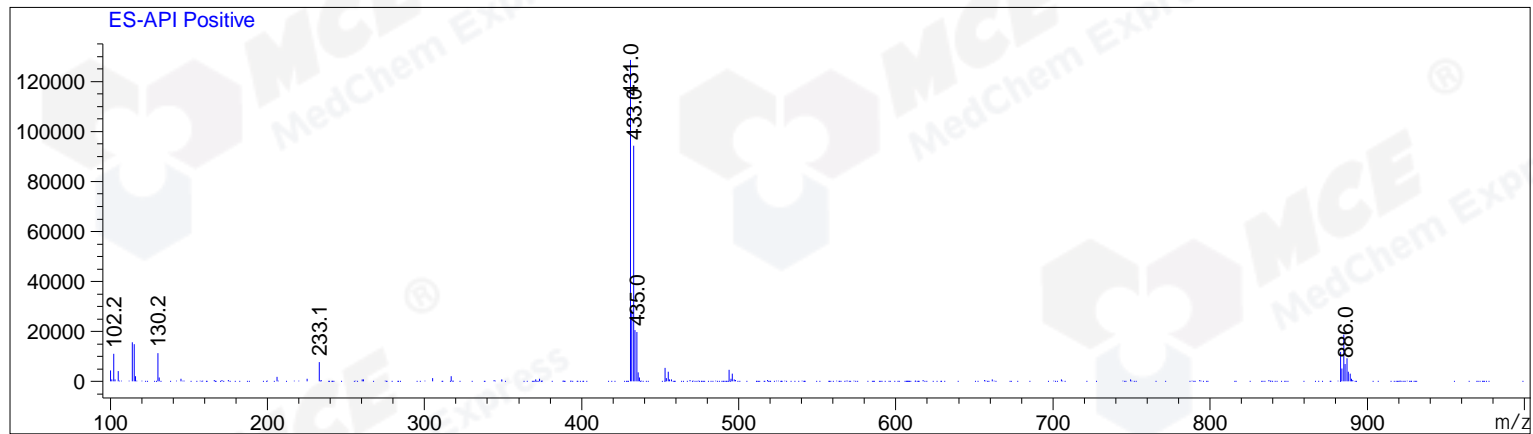
RetTim	Width	Area	Height	Area%	MS (+)
2.09	0.06	29.15	7.43	100.00	431

Integration Results for MSD1 TIC, MS File

RetTim	Width	Area	Height	Area%	MS (+)
2.02	0.06	5458139.50	1444717.88	100.00	431

Ret. Time: 2.02

<<<< POSITIVE SPECTRA >>>>



*** End of Report ***