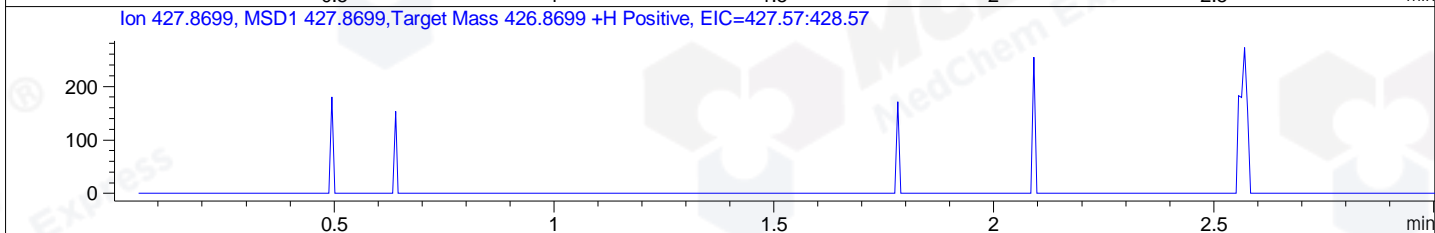
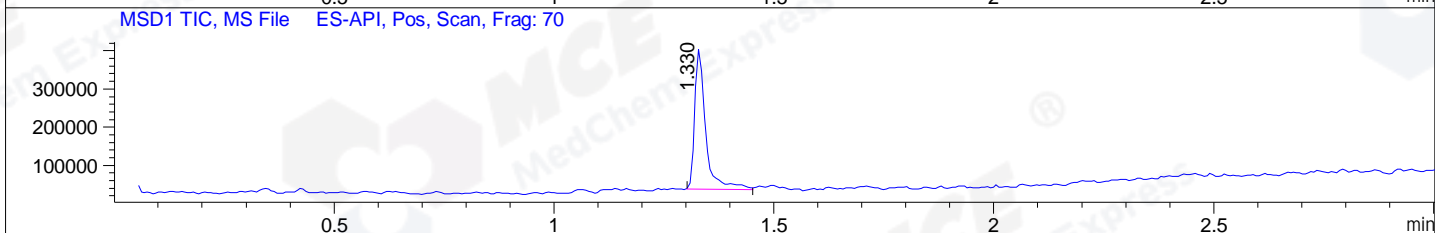
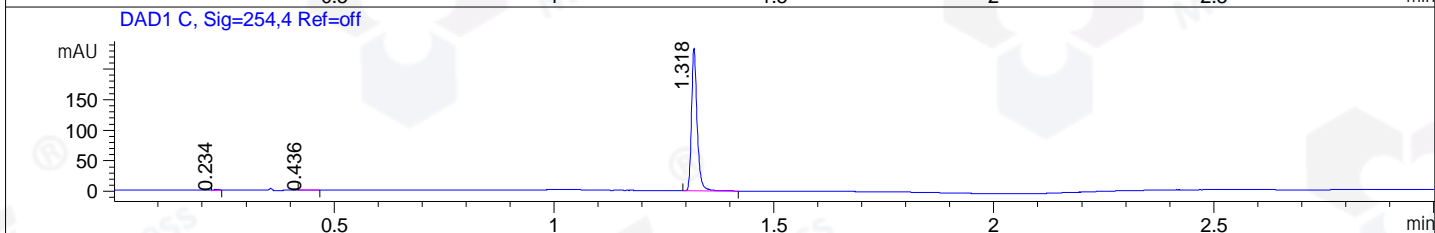
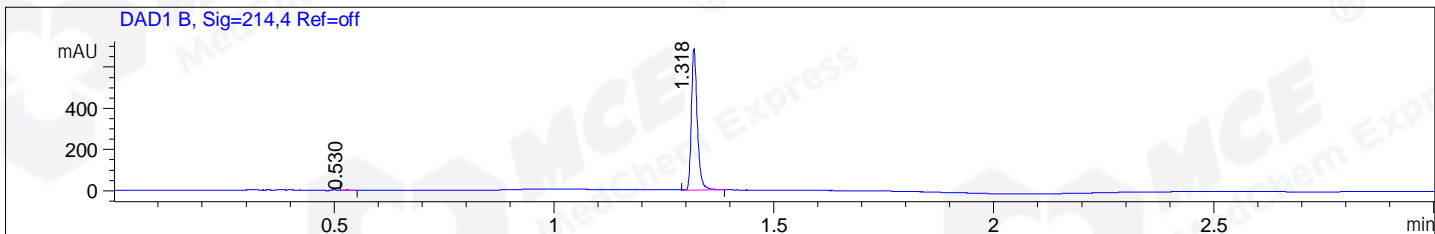


File ..\DATA\2019\20190809\682\CPK2019-808-22708.D Tgt Mass (CHM):  
 Injection Date : 9 Aug 19 10:45 am +0800 Seq. Line : 21  
 Sample Name : CPK2019-808-22708 Location : P1-A-03  
 Acq. Operator : ZJ\_1432 Inj : 1  
 Spec. Reported : MS Integration Inj Volume : 1 ul  
 Acq. Method : D:\Chem32\1\data\2019\20190809\682\1-POS-3MIN.M  
 Analysis Method : D:\CHEM32\1\DATA\2019\20190809\682\1-POS-3MIN.M  
 Catalog No : HY-18611 Batch#22708  
 Method Info : Mobile Phase: A: water(0.01%TFA) B:ACN(0.01%TFA)  
 Gradient: 5% to 95%B within 1.3 min  
 Flow Rate :1.8ml/min  
 Column :SunFire C18, 4.6\*50mm,3.5um A-RP-433  
 Oven Temperature : 45□



Integration Results for DAD1 B, Sig=214,4 Ref=off

RetTim	Width	Area	Height	Area%	MS (+)
0.53	0.02	1.99	1.77	0.31	130
1.32	0.02	642.98	687.29	99.69	391

Integration Results for DAD1 C, Sig=254,4 Ref=off

RetTim	Width	Area	Height	Area%	MS (+)
0.23	0.02	1.33	1.44	0.63	130
0.44	0.02	0.74	0.57	0.35	130
1.32	0.01	208.47	233.85	99.01	391

Integration Results for MSD1 TIC, MS File

RetTim	Width	Area	Height	Area%	MS (+)
1.33	0.03	634829.13	367609.53	100.00	391

Ret. Time: 1.33

<<<< POSITIVE SPECTRA >>>>

ES-API Positive

