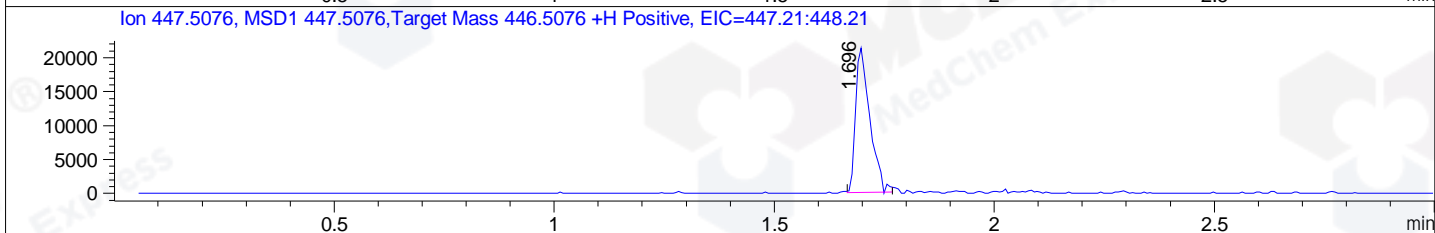
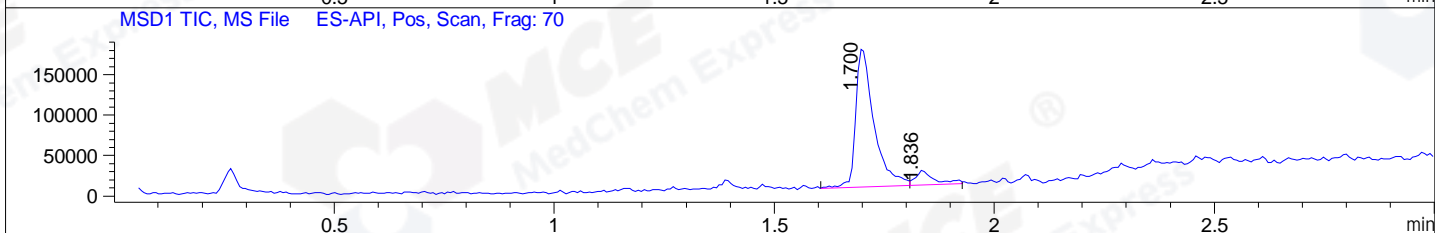
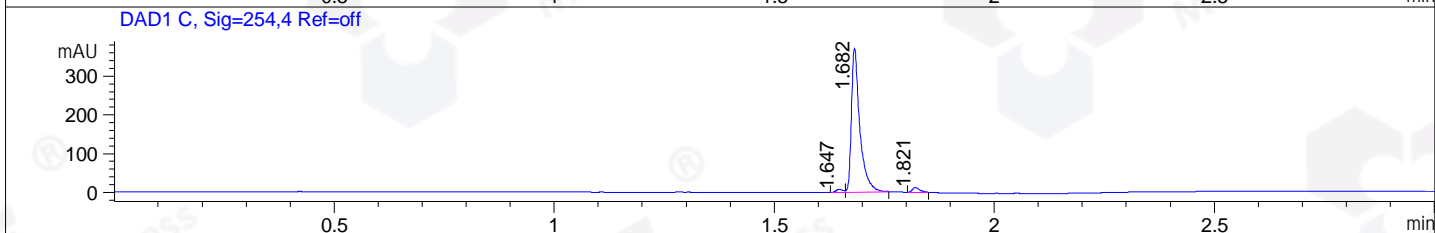
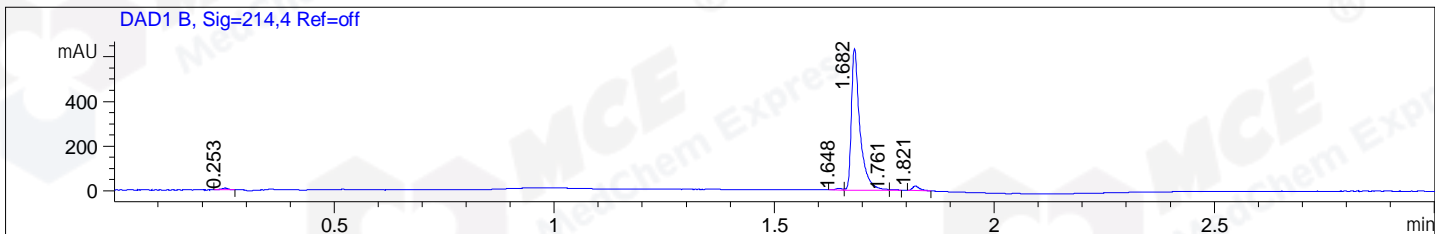


File ..DATA\2019\20190909\713\CPK2019-909-14350-.D Tgt Mass (CHM):
 Injection Date : 10 Sep 19 10:34 am +0800 Seq. Line : 20
 Sample Name : CPK2019-909-14350 Location : P1-A-08
 Acq. Operator : bgd_1571 Inj : 1
 Spec. Reported : MS Integration Inj Volume : 1.6 ul
 Acq. Method : D:\Chem32\1\data\2019\20190909\713\1-POS-3MIN.M
 Analysis Method : D:\CHEM32\1\DATA\2019\20190909\713\1-POS-3MIN.M
 Catalog No : HY-18613 Batch# 14350
 Method Info : Mobile Phase: A: water(0.01%TFA) B:ACN(0.01%TFA)
 Gradient: 5% to 95%B within 1.3 min
 Flow Rate :1.8ml/min
 Column :SunFire C18, 4.6*50mm,3.5um A-RP-433
 Oven Temperature : 45□



Integration Results for DAD1 B, Sig=214,4 Ref=off

RetTim	Width	Area	Height	Area%	MS (+)
0.25	0.02	8.07	7.55	0.90	159
1.65	0.02	7.21	6.87	0.81	141
1.68	0.02	849.60	634.93	95.06	447
1.76	0.02	3.70	3.64	0.41	469
1.82	0.02	25.17	20.64	2.82	432

Integration Results for DAD1 C, Sig=254,4 Ref=off

RetTim	Width	Area	Height	Area%	MS (+)
1.65	0.02	8.42	7.64	1.64	141
1.68	0.02	491.03	371.85	95.39	447
1.82	0.02	15.29	13.11	2.97	432

Integration Results for MSD1 TIC, MS File

RetTim	Width	Area	Height	Area%	MS (+)
1.70	0.04	498957.03	173406.94	90.37	447

1.84

0.04

53161.09

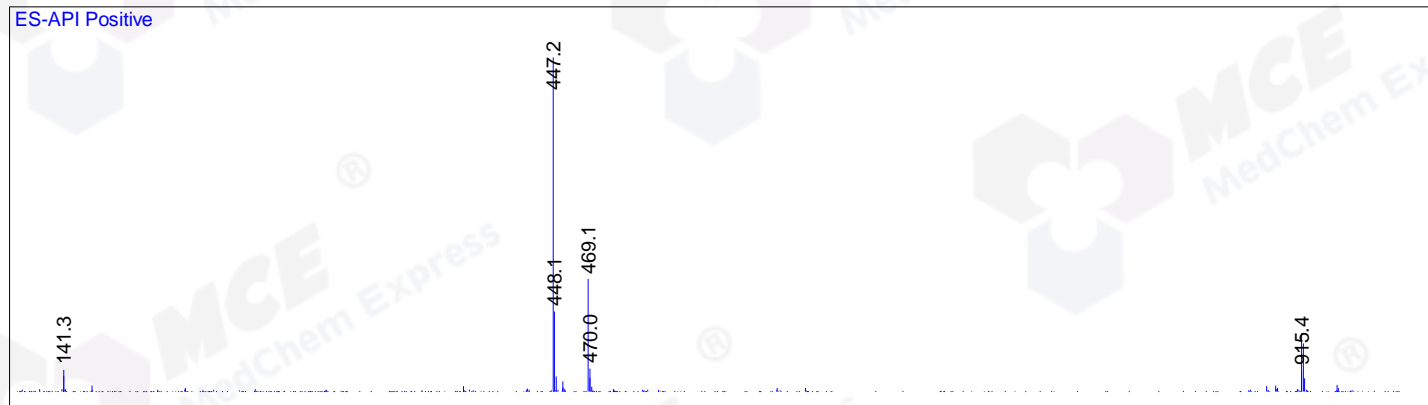
18198.75

9.63

469

Ret. Time: 1.70

<<<< POSITIVE SPECTRA >>>>



Ret. Time: 1.84

