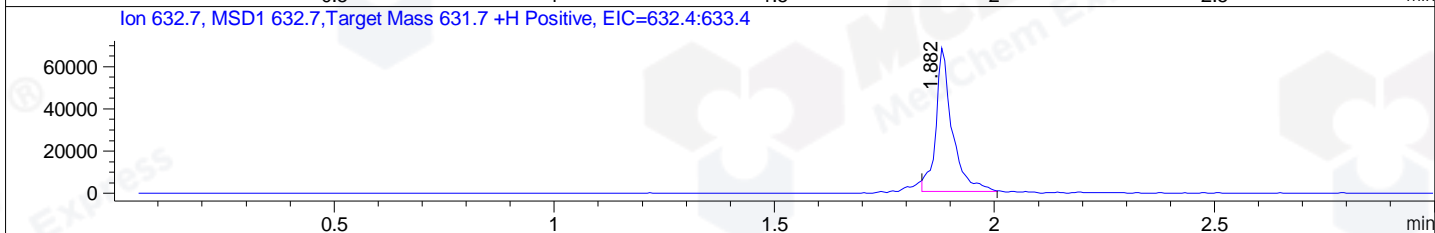
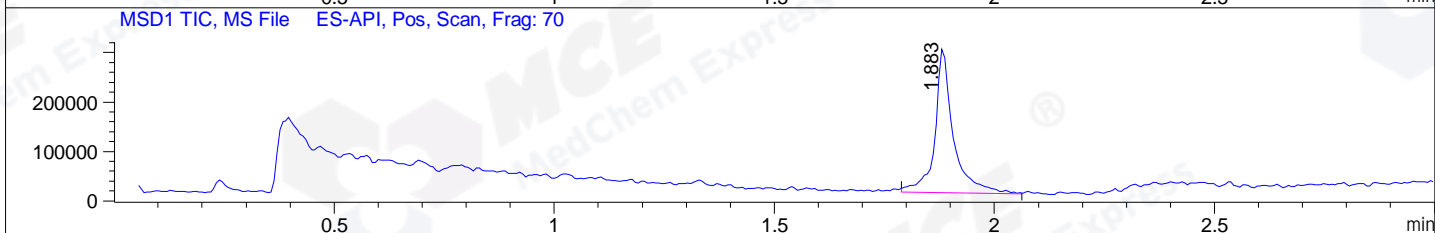
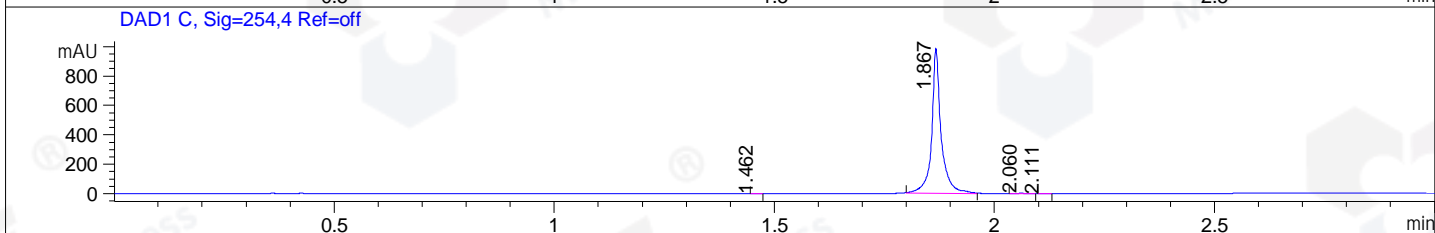
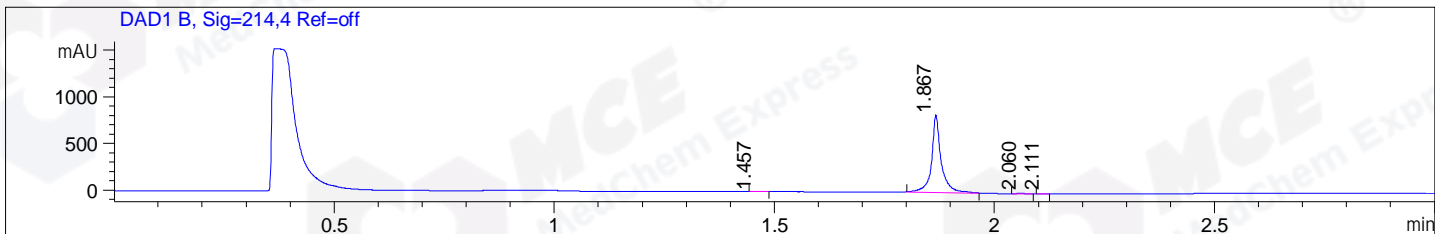


File ..\DATA\2019\20190306\545\CPK2019-306-20356.D Tgt Mass (CHM):
Injection Date : 6 Mar 19 4:11 pm +0800 Seq. Line : 89
Sample Name : CPK2019-306-20356 Location : P1-F-01
Acq. Operator : LQ_1052 Inj : 1
Spec. Reported : MS Integration Inj Volume : 1 ul
Acq. Method : D:\Chem32\1\data\2019\20190306\545\1-POS-3MIN-1.M
Analysis Method : D:\CHEM32\1\DATA\2019\20190306\545\1-POS-3MIN-1.M
Catalog No : HY-18683 Batch#20356
Method Info : Mobile Phase: A: water(0.01%TFA) B:ACN(0.01%TFA)
Gradient: 5% to 95%B within 1.3 min
Flow Rate :1.8ml/min
Column :SunFire C18, 4.6*50mm,3.5um A-RP-314
Oven Temperature : 45



Integration Results for DAD1 B, Sig=214,4 Ref=off

RetTim	Width	Area	Height	Area%	MS (+)
1.46	0.02	5.22	3.77	0.40	157
1.87	0.02	1278.36	832.01	98.97	632
2.06	0.02	6.64	5.55	0.51	157
2.11	0.02	1.46	1.57	0.11	157

Integration Results for DAD1 C, Sig=254,4 Ref=off

RetTim	Width	Area	Height	Area%	MS (+)
1.46	0.01	0.29	0.28	0.02	157
1.87	0.02	1482.98	987.77	99.55	632
2.06	0.02	5.38	3.98	0.36	157
2.11	0.02	0.98	1.05	0.07	157

Integration Results for MSD1 TIC, MS File

RetTim	Width	Area	Height	Area%	MS (+)
1.88	0.04	850037.44	293621.91	100.00	632

Ret. Time: 1.88

<<<< POSITIVE SPECTRA >>>>

ES-API Positive

