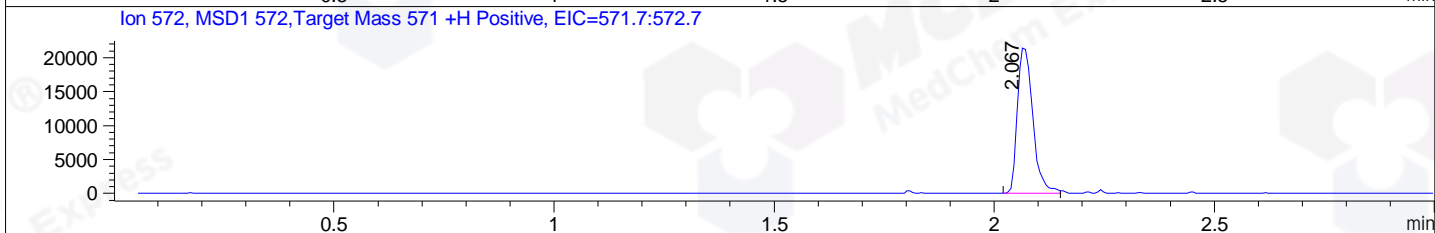
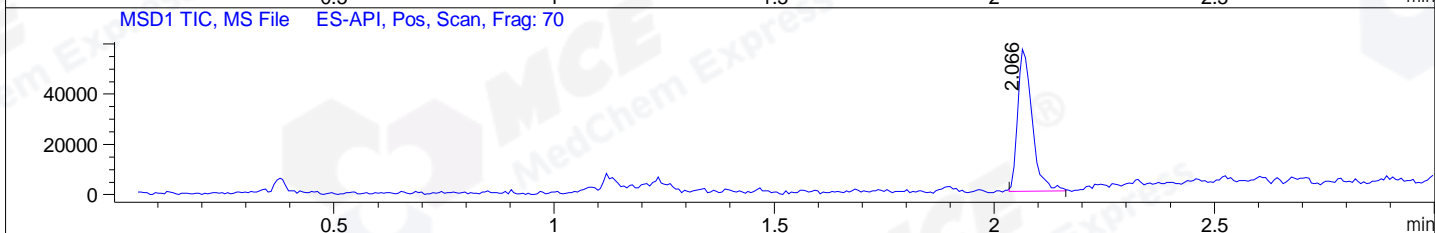
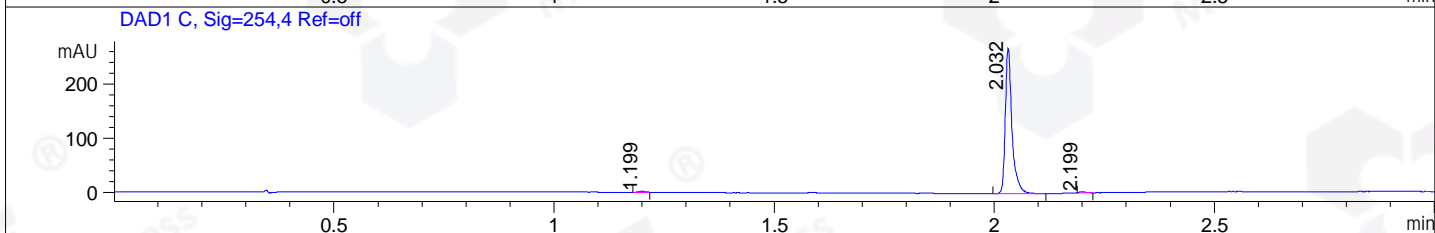
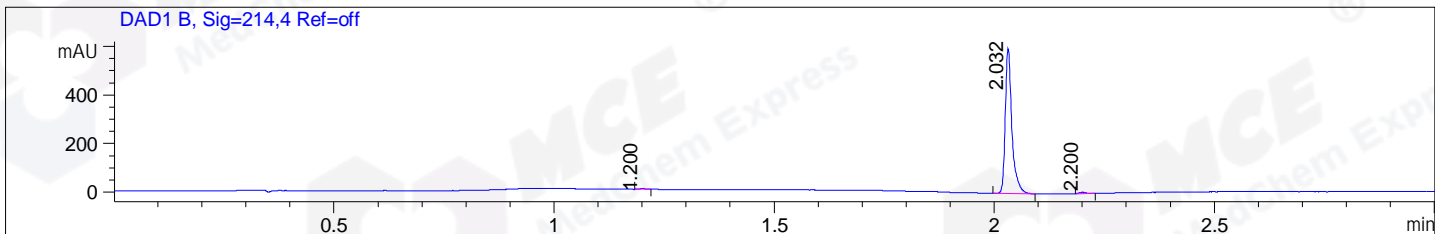


File ..1\DATA\2020\20200521\968\BIZ2020-519-CXL7.D Tgt Mass (CHM):
 Injection Date : 21 May 20 11:01 am +0800 Seq. Line : 29
 Sample Name : BIZ2020-519-CXL7 Location : P1-C-05
 Acq. Operator : ZJ_1432 Inj : 1
 Spec. Reported : MS Integration Inj Volume : 1 ul
 Acq. Method : D:\Chem32\1\data\2020\20200521\968\1-POS-3MIN.M
 Analysis Method : D:\CHEM32\1\DATA\2020\20200521\968\1-POS-3MIN.M
 Catalog No : HY-18697
 Method Info : Mobile Phase: A: water(0.01%TFA) B:ACN(0.01%TFA)
 Gradient: 5% to 95%B within 1.3 min
 Flow Rate :1.8ml/min
 Column :SunFire C18, 4.6*50mm,3.5um A-RP-607
 Oven Temperature : 45□



Integration Results for DAD1 B, Sig=214,4 Ref=off

RetTim	Width	Area	Height	Area%	MS (+)
1.20	0.01	2.55	3.22	0.40	361
2.03	0.02	626.22	598.49	98.77	572
2.20	0.02	5.24	4.82	0.83	ND

Integration Results for DAD1 C, Sig=254,4 Ref=off

RetTim	Width	Area	Height	Area%	MS (+)
1.20	0.01	1.46	1.87	0.51	361
2.03	0.02	283.27	268.55	98.73	572
2.20	0.02	2.18	2.35	0.76	ND

Integration Results for MSD1 TIC, MS File

RetTim	Width	Area	Height	Area%	MS (+)
2.07	0.03	129231.24	56870.43	100.00	572

Ret. Time: 2.07

<<<< POSITIVE SPECTRA >>>>

ES-API Positive

576.1 573.2 574.1 572.1