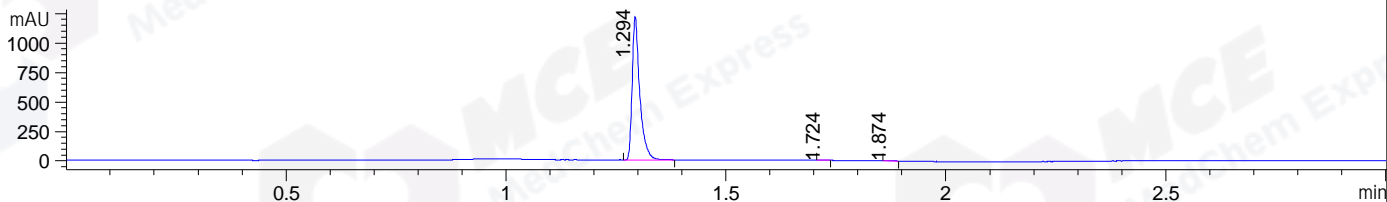
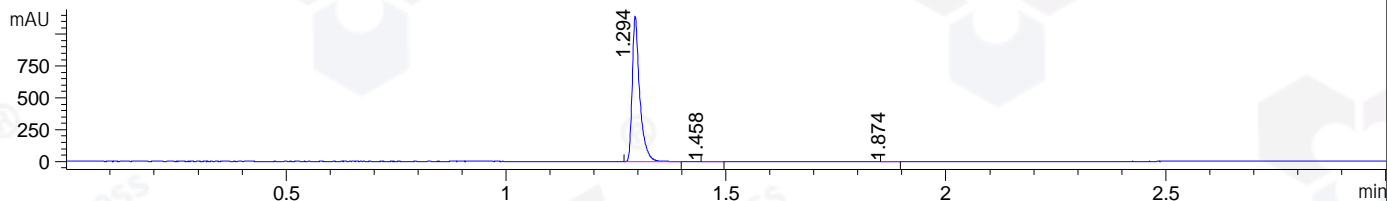


File ..1\DATA\2020\20200103\802\BIZ2020-102-SCH2.D Tgt Mass (CHM):
Injection Date : 3 Jan 20 11:35 am +0800 Seq. Line : 35
Sample Name : BIZ2020-102-SCH2 Location : P1-A-06
Acq. Operator : ZJ_1432 Inj : 1
Spec. Reported : MS Integration Inj Volume : 1 ul
Acq. Method : D:\Chem32\1\data\2020\20200103\802\1-POS-3MIN.M
Analysis Method : D:\CHEM32\1\DATA\2020\20200103\802\1-POS-3MIN.M
Catalog No : HY-18708 Batch#58488
Method Info : Mobile Phase: A: water(0.01%TFA) B:ACN(0.01%TFA)
Gradient: 5% to 95%B within 1.3 min
Flow Rate :1.8ml/min
Column :SunFire C18, 4.6*50mm,3.5um A-RP-433
Oven Temperature : 45□

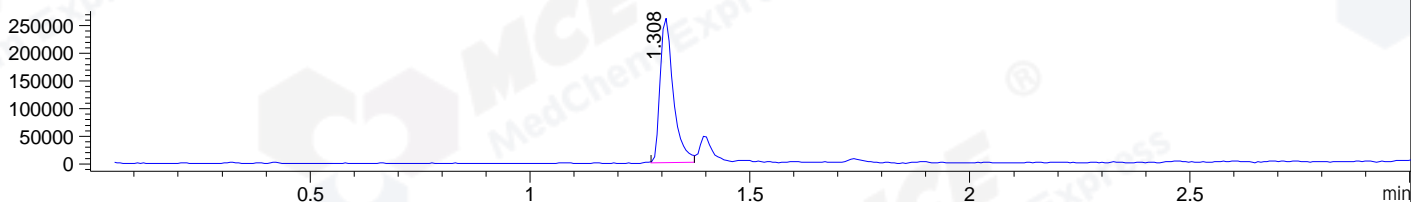
DAD1 B, Sig=214,4 Ref=off



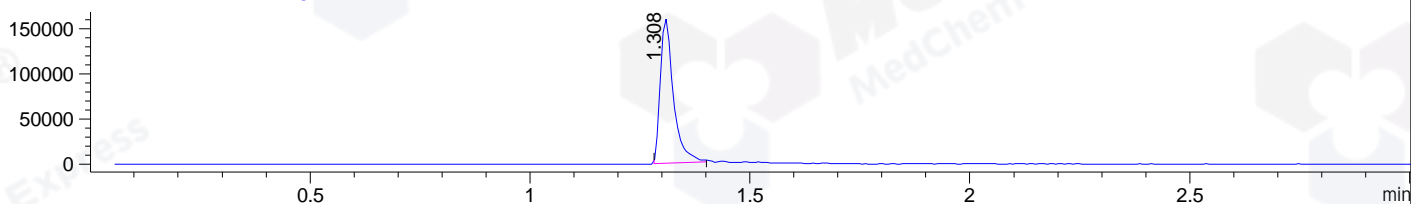
DAD1 C, Sig=254,4 Ref=off



MSD1 TIC, MS File ES-API, Pos, Scan, Frag: 70



Ion 447, MSD1 447, Target Mass 446 +H Positive, EIC=446.7:447.7



Integration Results for DAD1 B, Sig=214,4 Ref=off

RetTim	Width	Area	Height	Area%	MS (+)
1.29	0.02	1463.17	1216.69	99.66	447
1.72	0.02	1.80	1.81	0.12	611
1.87	0.02	3.13	2.82	0.21	ND

Integration Results for DAD1 C, Sig=254,4 Ref=off

RetTim	Width	Area	Height	Area%	MS (+)
1.29	0.02	1358.10	1142.69	99.77	447
1.46	0.03	1.16	0.66	0.09	447
1.87	0.02	1.97	1.50	0.14	ND

Integration Results for MSD1 TIC, MS File

RetTim	Width	Area	Height	Area%	MS (+)
1.31	0.03	546176.44	262502.22	100.00	447

Ret. Time: 1.31

<<<< POSITIVE SPECTRA >>>>

ES-API Positive

