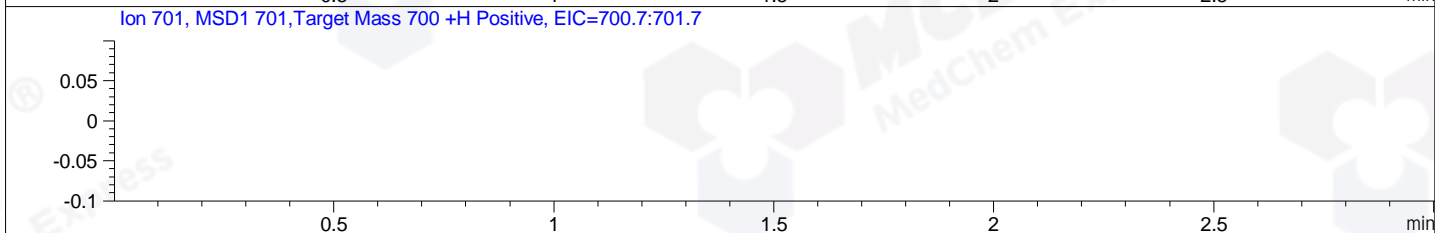
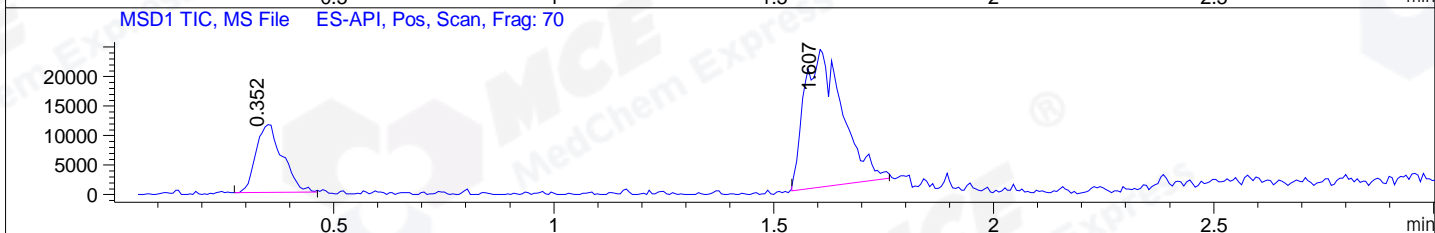
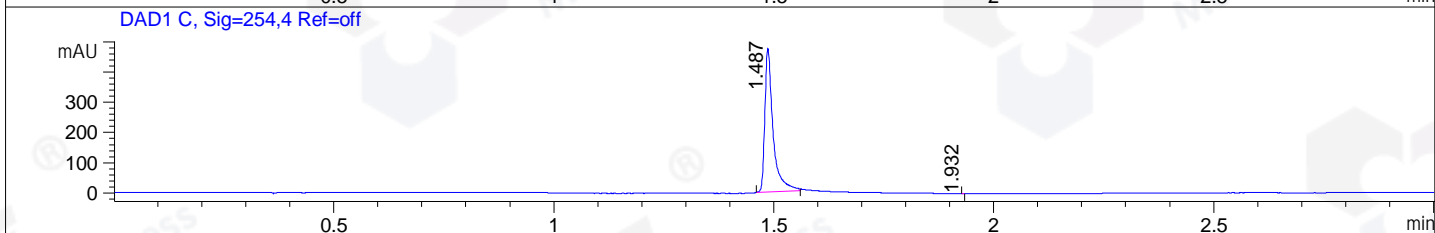
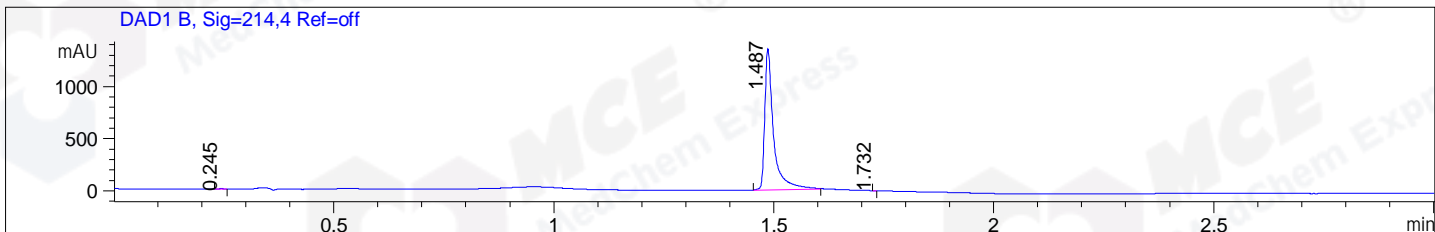


File ..\DATA\2019\20190129\549\CPK2019-128-20448.D Tgt Mass (CHM):
 Injection Date : 29 Jan 19 11:04 am +0800 Seq. Line : 26
 Sample Name : CPK2019-128-20448 Location : P1-B-02
 Acq. Operator : LQ_1052 Inj : 1
 Spec. Reported : MS Integration Inj Volume : 1 ul
 Acq. Method : D:\Chem32\1\data\2019\20190129\549\1-POS-3MIN-1.M
 Analysis Method : D:\CHEM32\1\DATA\2019\20190129\549\1-POS-3MIN-1.M
 Catalog No : HY-18711A Batch#20448
 Method Info : Mobile Phase: A: water(0.01%TFA) B:ACN(0.01%TFA)
 Gradient: 5% to 95%B within 1.3 min
 Flow Rate :1.8ml/min
 Column :SunFire C18, 4.6*50mm,3.5um A-RP-314
 Oven Temperature : 45□



Integration Results for DAD1 B, Sig=214,4 Ref=off

RetTim	Width	Area	Height	Area%	MS (+)
0.25	0.02	1.74	1.68	0.09	ND
1.49	0.02	1894.34	1354.70	99.90	290
1.73	0.01	0.17	0.49	0.01	290

Integration Results for DAD1 C, Sig=254,4 Ref=off

RetTim	Width	Area	Height	Area%	MS (+)
1.49	0.02	620.77	476.34	99.99	ND
1.93	0.00	0.05	0.17	0.01	ND

Integration Results for MSD1 TIC, MS File

RetTim	Width	Area	Height	Area%	MS (+)
0.35	0.05	47835.54	11499.81	25.33	122
1.61	0.09	140996.72	23531.74	74.67	290

Ret. Time: 0.35

<<<< POSITIVE SPECTRA >>>>

ES-API Positive



Ret. Time: 1.61

ES-API Positive

