

File ..\DATA\2019\20190720\650\CPK2019-717-22028.D Tgt Mass (CHM):

Injection Date : 20 Jul 19 1:13 pm +0800 Seq. Line : 57

Sample Name : CPK2019-717-22028 Location : P1-E-05

Acq. Operator : ZJ\_1432 Inj : 1

Spec. Reported : MS Integration Inj Volume : 1 ul

Acq. Method : D:\Chem32\1\data\2019\20190720\650\1-POS-3MIN.M

Analysis Method : D:\CHEM32\1\DATA\2019\20190720\650\1-POS-3MIN.M

Catalog No : HY-18719D Batch#22028

Method Info : Mobile Phase: A: water(0.01%TFA) B:ACN(0.01%TFA)

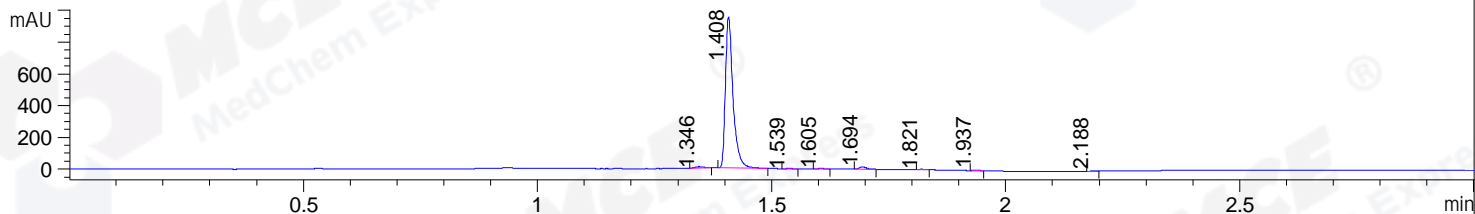
Gradient: 5% to 95%B within 1.3 min

Flow Rate :1.8ml/min

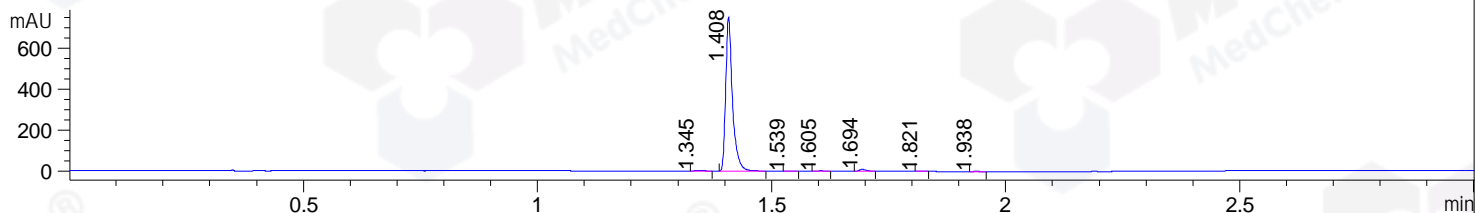
Column :SunFire C18, 4.6\*50mm,3.5um A-RP-433

Oven Temperature : 45

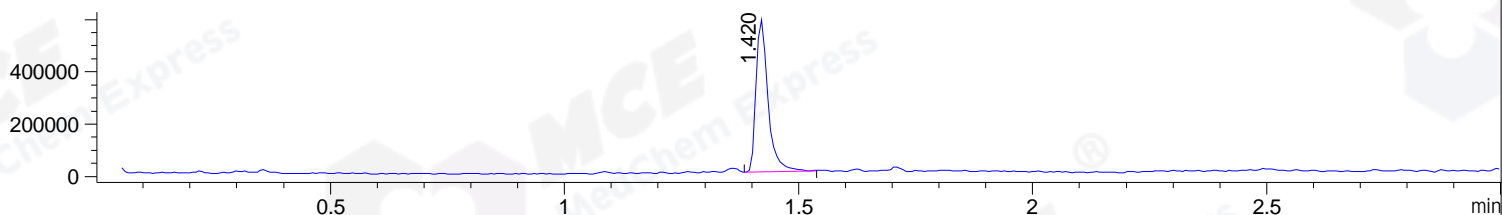
DAD1 B, Sig=214,4 Ref=off



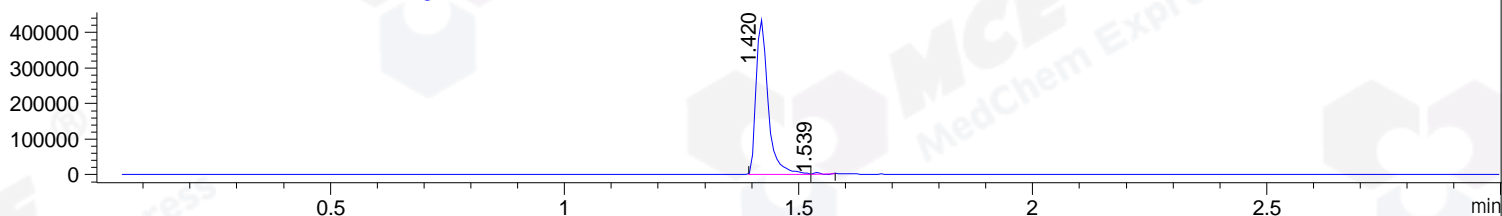
DAD1 C, Sig=254,4 Ref=off



MSD1 TIC, MS File ES-API, Pos, Scan, Frag: 70



Ion 374.4994, MSD1 374.4994, Target Mass 373.4994 +H Positive, EIC=374.20:375.20



## Integration Results for DAD1 B, Sig=214,4 Ref=off

RetTim	Width	Area	Height	Area%	MS (+)
1.35	0.02	8.88	7.77	0.80	157
1.41	0.02	1075.89	952.21	96.57	374
1.54	0.01	1.55	1.78	0.14	374
1.61	0.02	3.73	3.60	0.33	157
1.69	0.02	17.10	15.83	1.53	716
1.82	0.01	2.43	2.78	0.22	157
1.94	0.01	2.60	3.10	0.23	157
2.19	0.02	1.96	2.10	0.18	157

## Integration Results for DAD1 C, Sig=254,4 Ref=off

RetTim	Width	Area	Height	Area%	MS (+)
1.35	0.02	5.09	4.30	0.65	157
1.41	0.02	757.67	751.18	97.23	374
1.54	0.02	0.99	0.96	0.13	374
1.61	0.02	2.13	2.19	0.27	157
1.69	0.02	9.92	9.39	1.27	716
1.82	0.02	1.56	1.69	0.20	157

1.94 0.02 1.87 1.94 0.24 157

## Integration Results for MSD1 TIC, MS File

RetTim	Width	Area	Height	Area%	MS (+)
1.42	0.03	1032647.81	583471.06	100.00	374

Ret. Time: 1.42

<<<< POSITIVE SPECTRA >>>>

ES-API Positive

