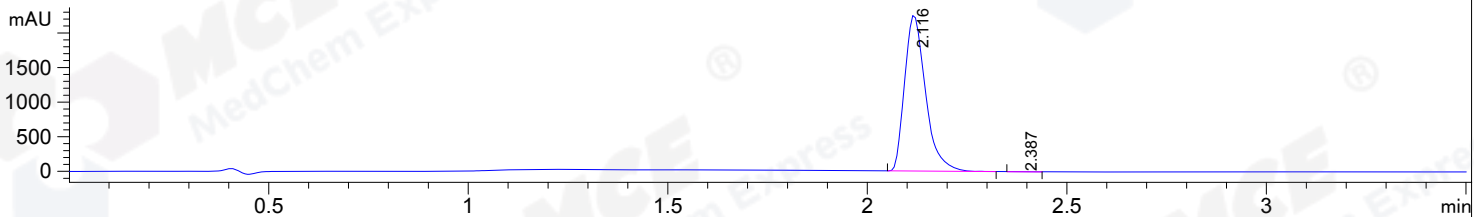


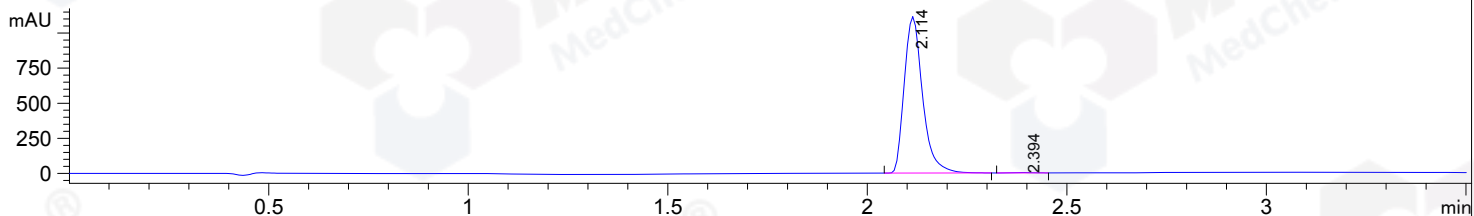
File ..0160512 2016-05-12 08-49-09\LFJ3225-052-A.D Tgt Mass (CHM) :

Injection Date : 12 May 16 9:38 am +0800 Seq. Line : 11  
 Sample Name : LFJ3225-052-A Location : P1-C-06  
 Acq. Operator : Su Xiao Ying(LCMS-02) Inj : 1  
 Spec. Reported : MS Integration Inj Volume : 3 ul  
 Acq. Method : D:\Aglient 1260\Data\20160512\20160512 2016-05-12 08-49-09\100-1000MS+3MIN-  
 Analysis Method : D:\AGLIENT 1260\DATA\20160512\20160512 2016-05-12 08-49-09\100-1000MS+3MIN-  
 Catalog No: HY-18767 Batch#20567 A-RP-134  
 Method Info : HY-365\_5H01RS,M,A-RP-108, 210nm,23min

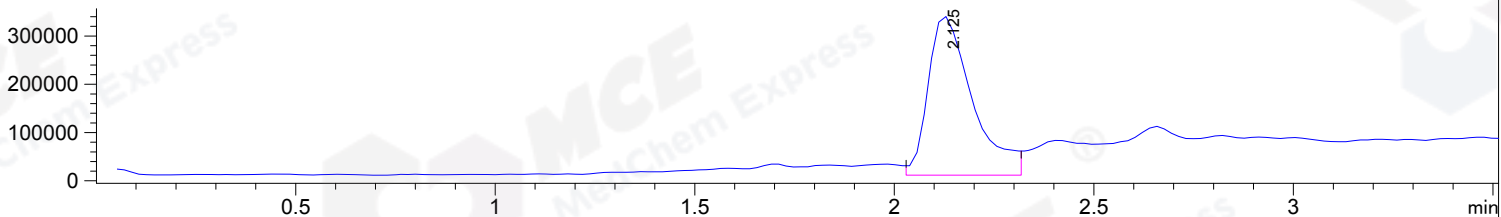
DAD1 B, Sig=214,4 Ref=off



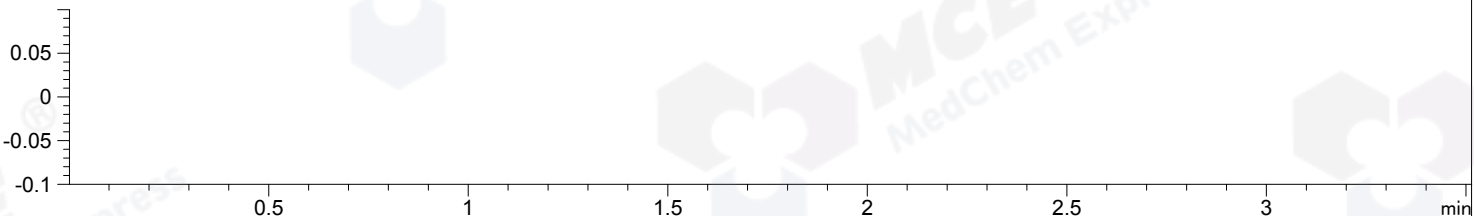
DAD1 C, Sig=254,4 Ref=off



MSD1 TIC, MS File ES-API, Pos, Scan, Frag: 50



Ion 1, MSD1 1, Target Mass 0 +H Positive, EIC=0.7:1.7



Integration Results for DAD1 B, Sig=214,4 Ref=off

RetTim	Width	Area	Height	Area%
2.12	0.06	8204.89	2266.55	99.86
2.39	0.06	11.39	3.11	0.14

Integration Results for DAD1 C, Sig=254,4 Ref=off

RetTim	Width	Area	Height	Area%
2.11	0.05	3559.00	1120.19	99.72
2.39	0.06	10.16	2.79	0.28

Ret. Time: 2.13 &lt;&lt;&lt;&lt; POSITIVE SPECTRA &gt;&gt;&gt;&gt;

