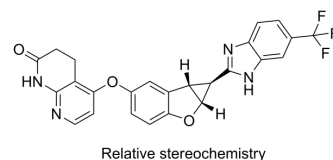


## rel-Lifirafenib

Cat. No.:	HY-18957A
CAS No.:	1446090-77-2
Molecular Formula:	C <sub>25</sub> H <sub>17</sub> F <sub>3</sub> N <sub>4</sub> O <sub>3</sub>
Molecular Weight:	478.42
Target:	Others
Pathway:	Others
Storage:	Please store the product under the recommended conditions in the Certificate of Analysis.



### BIOLOGICAL ACTIVITY

#### Description

rel-Lifirafenib (rel-BGB-283) is the relative configuration of Lifirafenib (HY-18957). Lifirafenib is a potent Raf Kinase and EGFR inhibitor<sup>[1]</sup>.

### REFERENCES

[1]. Tang Z, et al. BGB-283, a Novel RAF Kinase and EGFR Inhibitor, Displays Potent Antitumor Activity in BRAF-Mutated Colorectal Cancers. Mol Cancer Ther. 2015 Oct;14(10):2187-97.

**Caution: Product has not been fully validated for medical applications. For research use only.**

Tel: 609-228-6898

Fax: 609-228-5909

E-mail: tech@MedChemExpress.com

Address: 1 Deer Park Dr, Suite Q, Monmouth Junction, NJ 08852, USA