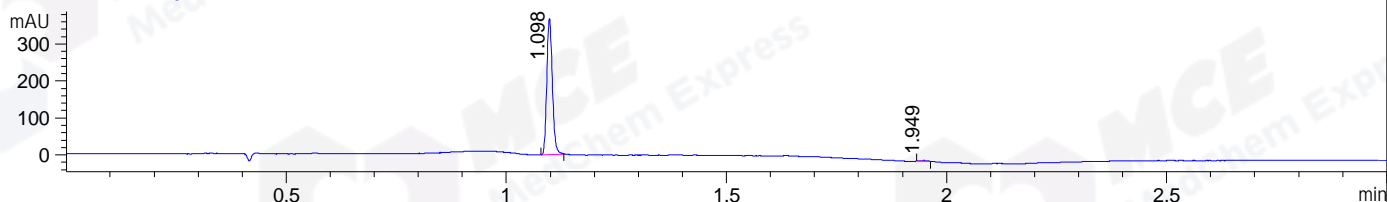
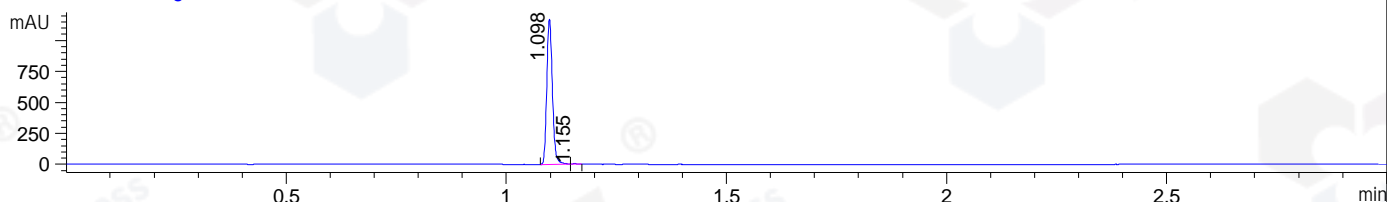


File ..DATA\2020\20201202\1181\CPK2020-D01-59785.D Tgt Mass (CHM):
 Injection Date : 2 Dec 20 10:12 pm +0800 Seq. Line : 138
 Sample Name : CPK2020-D01-59785 Location : P1-C-03
 Acq. Operator : zyj_1547 Inj : 1
 Spec. Reported : MS Integration Inj Volume : 1 ul
 Acq. Method : D:\Chem32\1\data\2020\20201202\1181\1-POS-3MIN.M
 Analysis Method : D:\CHEM32\1\DATA\2020\20201202\1181\1-POS-3MIN.M
 CAS NO. : 1489389-18-5
 Method Info : Mobile Phase: A: water(0.01%TFA) B:ACN(0.01%TFA)
 Gradient: 5% to 95%B within 1.3 min
 Flow Rate :1.8ml/min
 Column :SunFire C18, 4.6*50mm,3.5um A-RP-698

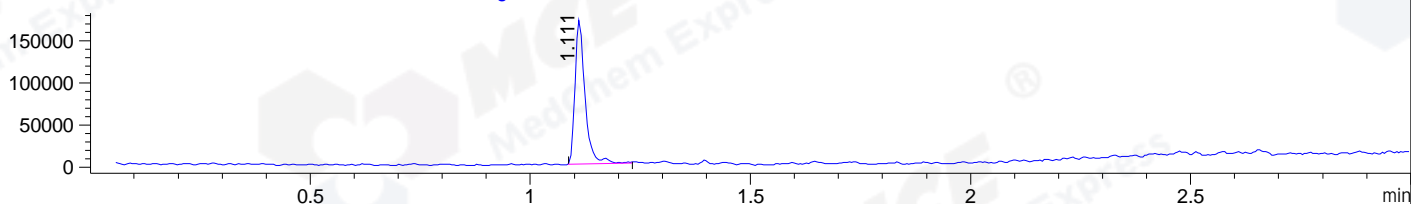
DAD1 B, Sig=214,4 Ref=off



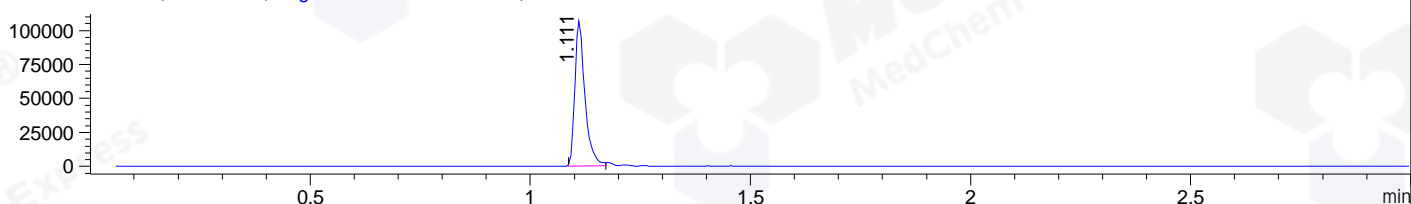
DAD1 C, Sig=254,4 Ref=off



MSD1 TIC, MS File ES-API, Pos, Scan, Frag: 70



Ion 380, MSD1 380, Target Mass 379 +H Positive, EIC=379.7:380.7



Integration Results for DAD1 B, Sig=214,4 Ref=off

RetTim	Width	Area	Height	Area%	MS(+)
1.10	0.01	321.84	368.70	99.35	380
1.95	0.02	2.10	1.88	0.65	ND

Integration Results for DAD1 C, Sig=254,4 Ref=off

RetTim	Width	Area	Height	Area%	MS(+)
1.10	0.01	1040.10	1174.10	99.59	380
1.16	0.01	4.24	5.21	0.41	380

Integration Results for MSD1 TIC, MS File

RetTim	Width	Area	Height	Area%	MS(+)
1.11	0.02	273007.00	171369.73	100.00	380

Ret. Time: 1.11

<<<< POSITIVE SPECTRA >>>>

ES-API Positive

