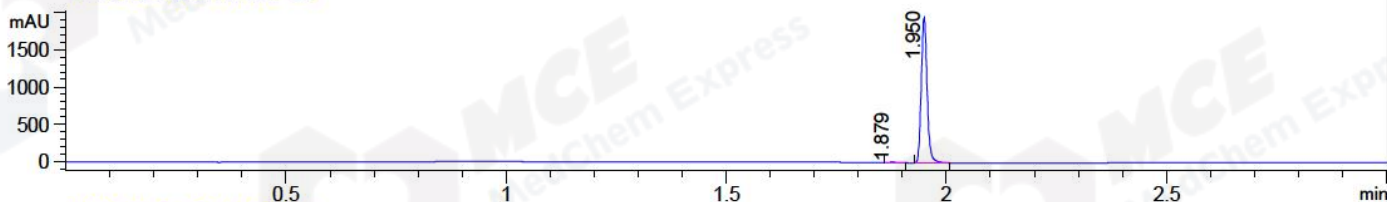


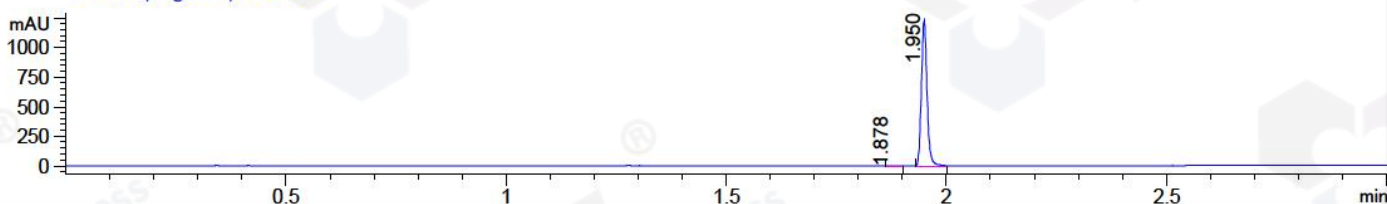
File D:\CHEM32\1\DATA\2018\306\CPK2018-709-18335.D Tgt Mass (CHM):

Injection Date : 10 Jul 18 12:57 pm +0800 Seq. Line : 5  
 Sample Name : CPK2018-709-18335 Location : P1-D-08  
 Acq. Operator : LQ\_1052 Inj : 1  
 Spec. Reported : MS Integration Inj Volume : 1 ul  
 Acq. Method : D:\Chem32\1\data\2018\306\1-POS-3MIN-1.M  
 Analysis Method : D:\CHEM32\1\DATA\2018\306\1-POS-3MIN-1.M  
 Catalog No : HY-18965 Batch#18335 A-RP-314  
 Method Info : Mobile Phase: A: water(0.01%TFA) B:ACN(0.01%TFA)  
 Gradient: 5% to 95%B within 1.3 min  
 Flow Rate :1.8ml/min  
 Column :SunFire C18, 4.6\*50mm,3.5um A-RP-314  
 Oven Temperature : 45□

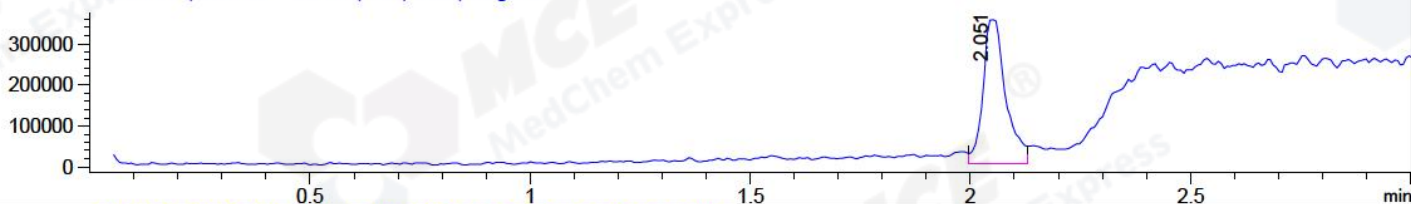
DAD1 B, Sig=214,4 Ref=off



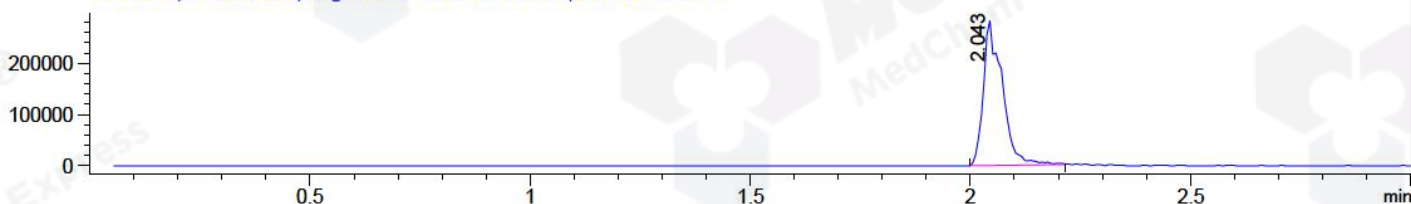
DAD1 C, Sig=254,4 Ref=off



MSD1 TIC, MS File ES-API, Pos, Scan, Frag: 70



Ion 358.4, MSD1 358.4, Target Mass 357.4 +H Positive, EIC=358.1:359.1



## Integration Results for DAD1 B, Sig=214,4 Ref=off

RetTim	Width	Area	Height	Area%	MS (+)
1.88	0.02	9.05	8.26	0.50	235
1.95	0.01	1807.96	1947.34	99.50	235

## Integration Results for DAD1 C, Sig=254,4 Ref=off

RetTim	Width	Area	Height	Area%	MS (+)
1.88	0.02	3.68	3.78	0.33	235
1.95	0.01	1105.92	1229.69	99.67	235

## Integration Results for MSD1 TIC, MS File

RetTim	Width	Area	Height	Area%	MS (+)
2.05	0.05	1260643.00	349790.44	100.00	358

Ret. Time: 2.05

<<<< POSITIVE SPECTRA >>>>

