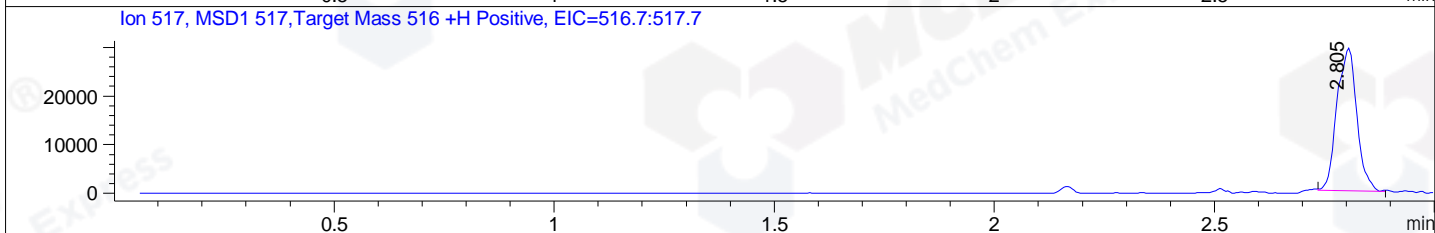
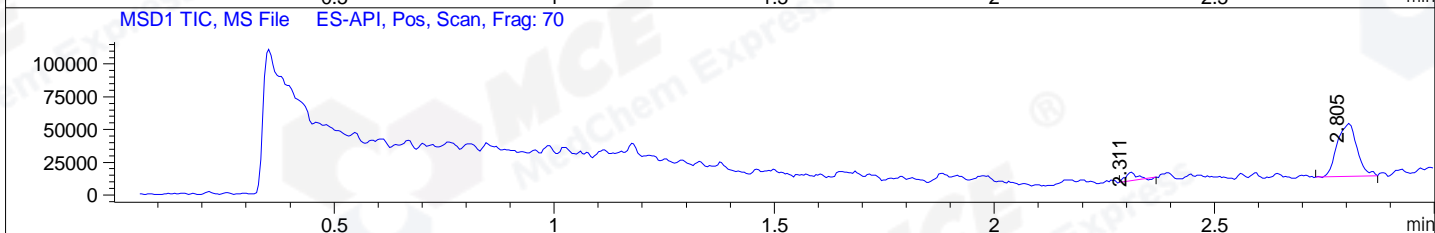
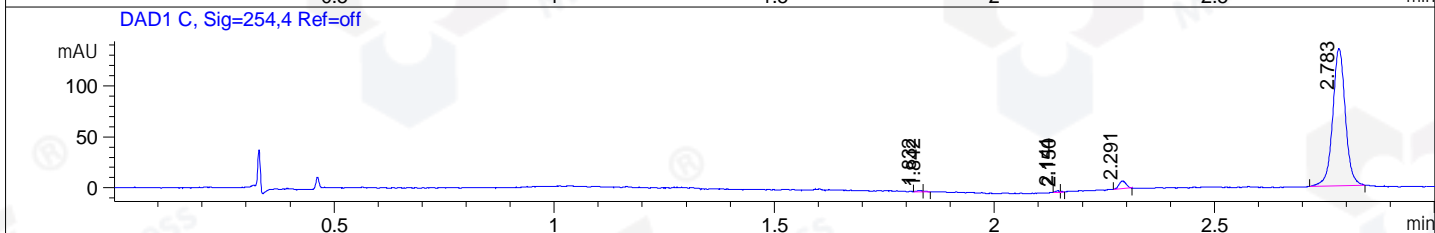
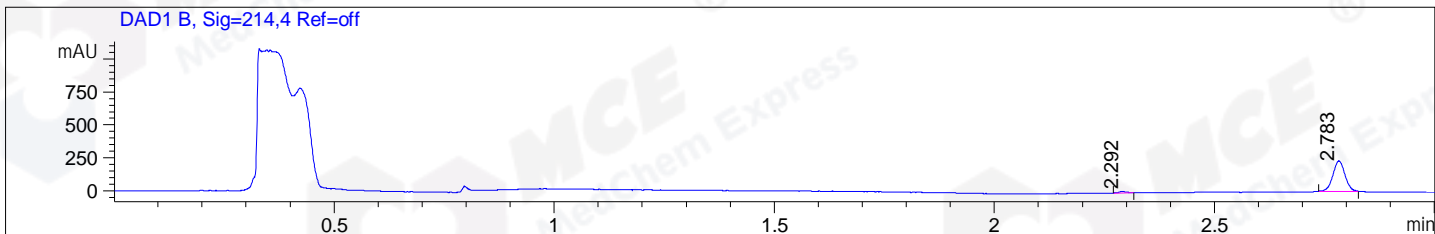


File ..ATA\2020\20200729\1057\BIZ2020-729-WMX12.D Tgt Mass (CHM):

**Injection Date** : 29 Jul 20 12:13 pm +0800      **Seq. Line** : 43  
**Sample Name** : BIZ2020-729-WMX12      **Location** : P1-D-05  
**Acq. Operator** : ZJ\_1432      **Inj** : 1  
**Spec. Reported** : MS Integration      **Inj Volume** : 5 ul  
**Acq. Method** : D:\Chem32\1\data\2020\20200729\1057\1-POS-3MIN.M  
**Analysis Method** : D:\CHEM32\1\DATA\2020\20200729\1057\1-POS-3MIN.M  
**Catalog No** : HY-18980  
**Method Info** : **Mobile Phase**: A: water(0.01%TFA) B:ACN(0.01%TFA)  
**Gradient**: 5% to 95%B within 1.3 min  
**Flow Rate** : 1.8ml/min  
**Column** :SunFire C18, 4.6\*50mm,3.5um A-RP-314  
**Oven Temperature** : 45C



## Integration Results for DAD1 B, Sig=214,4 Ref=off

RetTim	Width	Area	Height	Area%	MS (+)
2.29	0.02	14.14	11.21	3.16	157
2.78	0.03	433.90	229.69	96.84	517

## Integration Results for DAD1 C, Sig=254,4 Ref=off

RetTim	Width	Area	Height	Area%	MS (+)
1.83	0.01	1.07	1.38	0.38	157
1.84	0.01	0.46	0.77	0.17	157
2.14	0.01	0.95	1.42	0.34	157
2.15	0.00	0.23	0.87	0.08	157
2.29	0.02	8.52	7.72	3.07	157
2.78	0.03	266.71	134.76	95.96	517

## Integration Results for MSD1 TIC, MS File

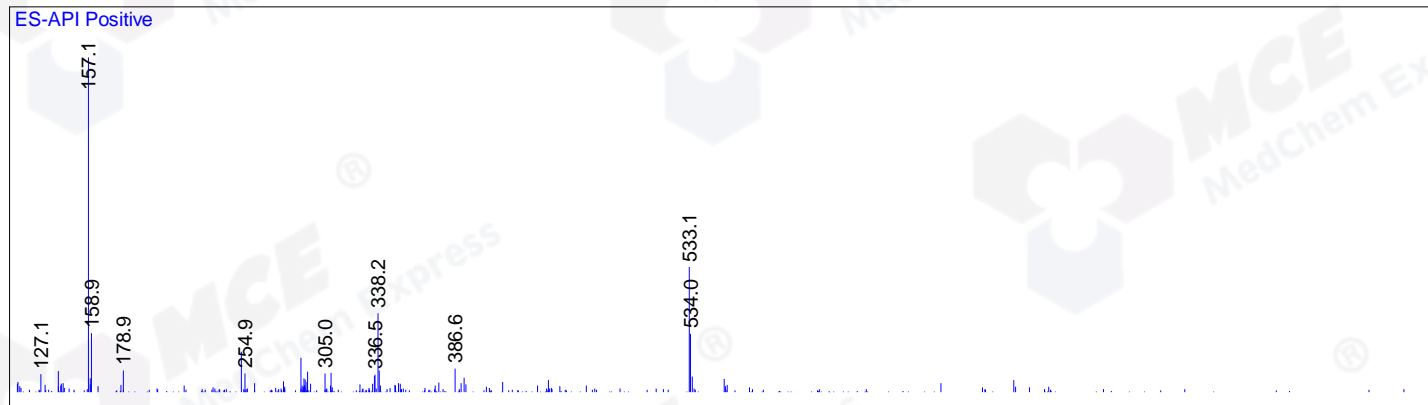
RetTim	Width	Area	Height	Area%	MS (+)
2.31	0.02	9814.09	6555.26	7.28	157

2.81      0.04      125043.02      40171.09      92.72      517

---

Ret. Time: 2.31

<<<< POSITIVE SPECTRA >>>>



Ret. Time: 2.81

