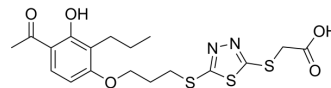


YM-16638

Cat. No.:	HY-19042
CAS No.:	104073-72-5
Molecular Formula:	C ₁₈ H ₂₂ N ₂ O ₅ S ₃
Molecular Weight:	442.57
Target:	Leukotriene Receptor
Pathway:	GPCR/G Protein
Storage:	Please store the product under the recommended conditions in the Certificate of Analysis.



BIOLOGICAL ACTIVITY

Description

YM-16638 is an orally active leukotriene (LT) antagonist. YM-16638 can inhibit the production of LTC₄, LTD₄, and LTE₄ in guinea pig trachea, with IC₅₀ values of 0.05 μM, 0.16 μM, and 0.096 μM, respectively. YM-16638 has a dose-dependent inhibitory effect on antigen-induced early and late respiratory responses in allergic sheep^[1].

REFERENCES

[1]. Tomioka K, et al. The effect of an orally active leukotriene (LT) antagonist YM-16638 on antigen-induced early and late airway responses in allergic sheep. *Prostaglandins Leukot Essent Fatty Acids*. 1989 Apr;36(1):43-7.

Caution: Product has not been fully validated for medical applications. For research use only.

Tel: 609-228-6898

Fax: 609-228-5909

E-mail: tech@MedChemExpress.com

Address: 1 Deer Park Dr, Suite Q, Monmouth Junction, NJ 08852, USA