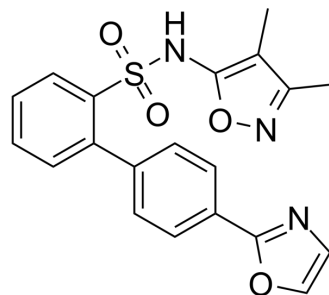


## BMS-193884

Cat. No.:	HY-19263
CAS No.:	176960-47-7
Molecular Formula:	C <sub>20</sub> H <sub>17</sub> N <sub>3</sub> O <sub>4</sub> S
Molecular Weight:	395.43
Target:	Endothelin Receptor
Pathway:	GPCR/G Protein
Storage:	Please store the product under the recommended conditions in the Certificate of Analysis.



### BIOLOGICAL ACTIVITY

<b>Description</b>	BMS-193884 is a selective, orally active, and competitive ET <sub>A</sub> antagonist with 10000-fold greater affinity for the human ET <sub>A</sub> receptor (K <sub>i</sub> =1.4 nM) than for the ET <sub>B</sub> receptor <sup>[1]</sup> .	
<b>IC<sub>50</sub> &amp; Target</b>	ET <sub>A</sub> 1.4 nM (K <sub>i</sub> )	ET <sub>B</sub> 18700 nM (K <sub>i</sub> )

### REFERENCES

[1]. Murugesan N, et al. Biphenylsulfonamide endothelin receptor antagonists. 4. Discovery of N-[[2'-[[[4,5-dimethyl-3-isoxazolyl]amino]sulfonyl]-4-(2-oxazolyl)[1,1'-biphenyl]-2-yl]methyl]-N,3,3-trimethylbutanamide (BMS-207940), a highly potent and orally active ET(A) selective antagonist. J Med Chem. 2003;46(1):125-137.

**Caution: Product has not been fully validated for medical applications. For research use only.**

Tel: 609-228-6898

Fax: 609-228-5909

E-mail: tech@MedChemExpress.com

Address: 1 Deer Park Dr, Suite Q, Monmouth Junction, NJ 08852, USA