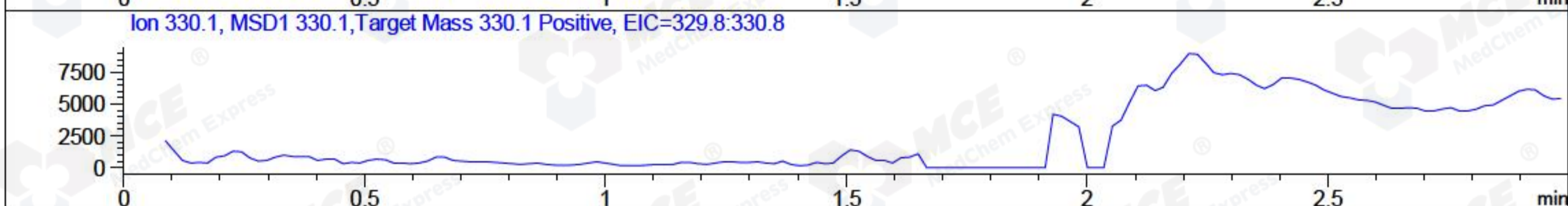
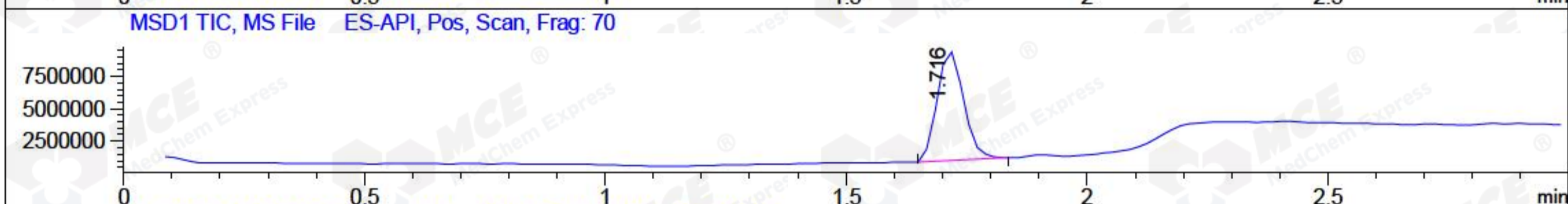
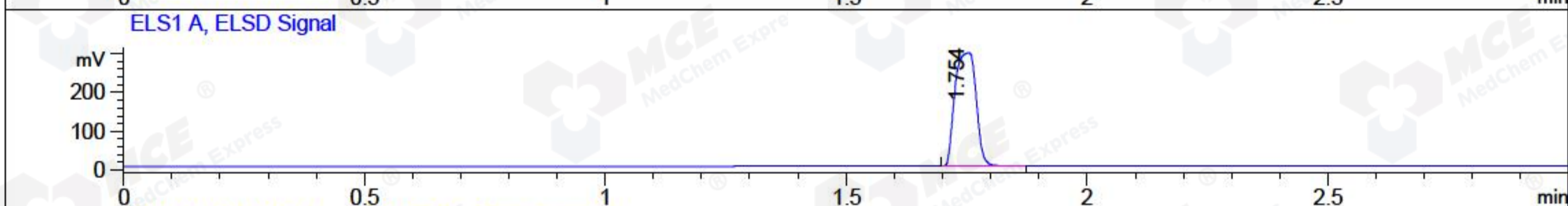
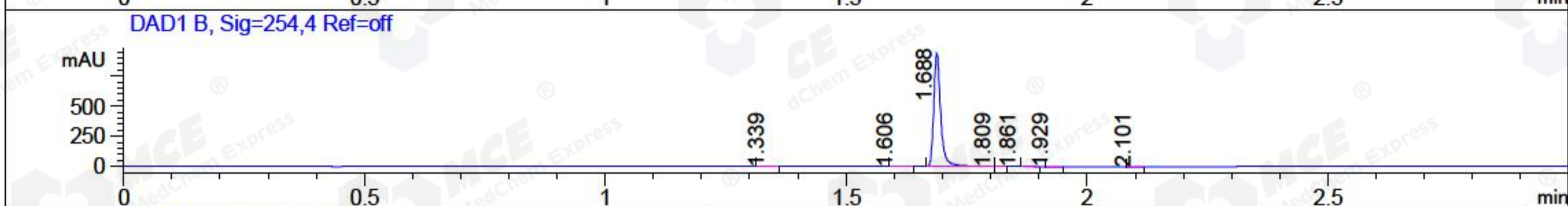
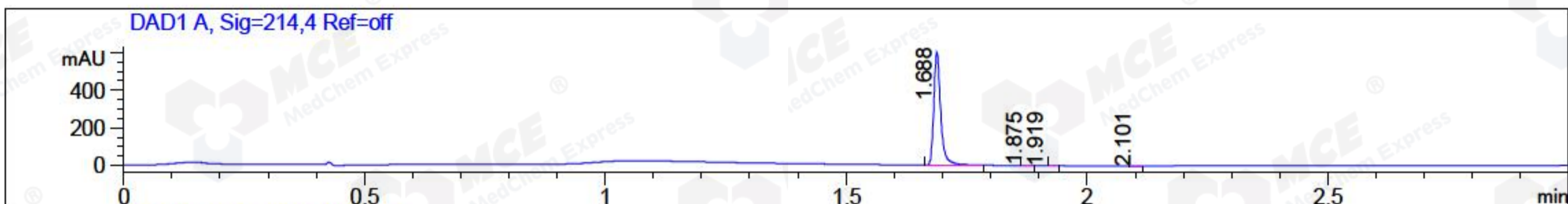


File ..3\Data\20170908\20170908\BIZ2017-908-WYQ3.D Tgt Mass (CHM):  
 Injection Date : 8 Sep 17 12:34 pm +0800 Seq. Line : 44  
 Sample Name : BIZ2017-908-WYQ3 Location : P1-D-06  
 Acq. Operator : SYSTEM Inj : 1  
 Spec. Reported : MS Integration Inj Volume : 1 ul  
 Acq. Method : D:\LCMS03\Data\20170908\20170908\1-POS-3MIN.M  
 Analysis Method : D:\LCMS03\Data\20170908\20170908\1-POS-3MIN.M  
 Catalog No : HY-19328 Batch#26227  
 Method Info : Mobile Phase: A: water(0.01%TFA) B:ACN(0.01%TFA)  
 Gradient: 5% to 95%B within 1.3 min  
 Flow Rate : 1.8ml/min  
 Column :SunFire C18, 4.6\*50mm,3.5um A-RP-186  
 Oven Temperature : 45C



Integration Results for DAD1 A, Sig=214,4 Ref=off

RetTim	Width	Area	Height	Area%	MS (+)
1.69	0.02	595.75	599.16	99.54	331
1.87	0.02	1.83	1.96	0.31	195
1.92	0.02	0.50	0.23	0.08	195
2.10	0.01	0.44	0.52	0.07	195

Integration Results for DAD1 B, Sig=254,4 Ref=off

RetTim	Width	Area	Height	Area%	MS (+)
1.34	0.02	2.78	2.26	0.29	195
1.61	0.02	0.59	0.41	0.06	195
1.69	0.02	937.25	938.76	99.08	331
1.81	0.01	0.46	0.69	0.05	195
1.86	0.02	3.08	0.25	0.33	195
1.93	0.02	0.72	0.62	0.08	195
2.10	0.02	1.03	0.89	0.11	195

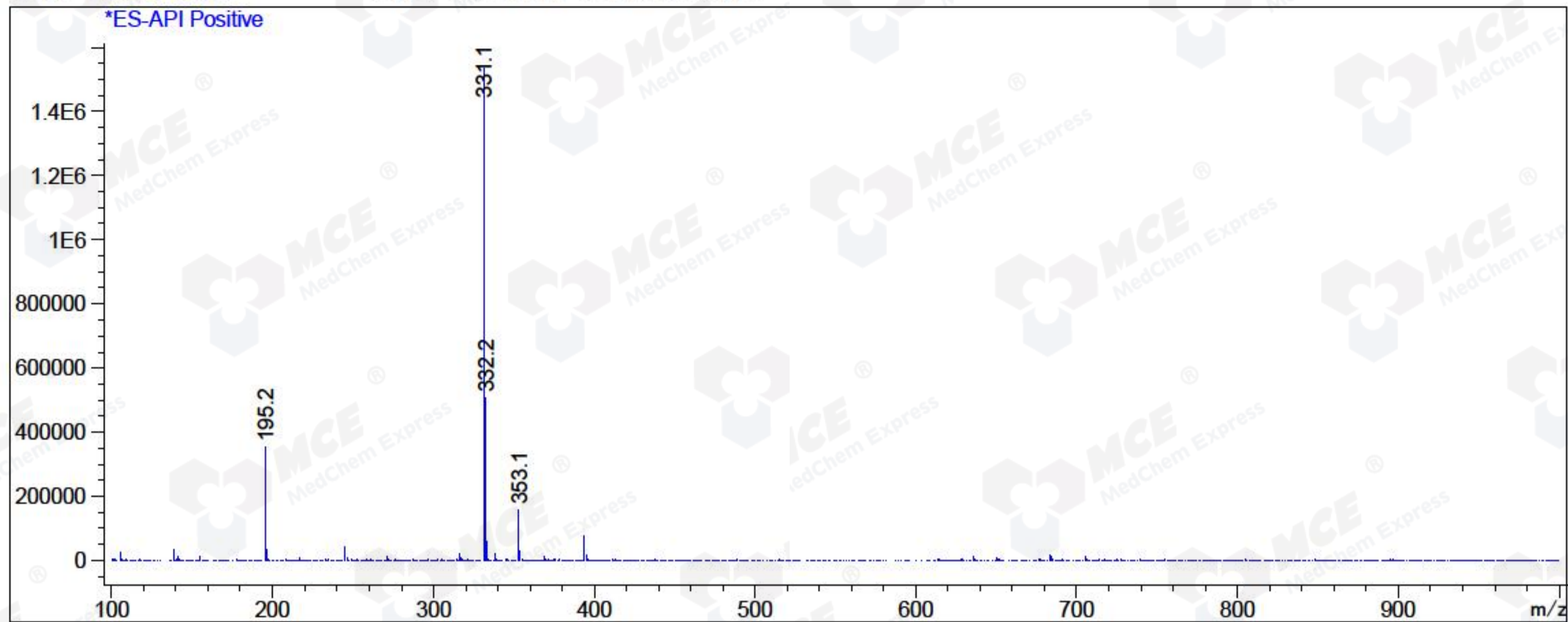
Integration Results for MSD1 TIC, MS File

1.72      0.06      32427382.00      8457442.00      100.00      331

RetTim	Width	Area	Height	Area%	MS (+)
--------	-------	------	--------	-------	--------

Ret. Time: 1.72

<<<< POSITIVE SPECTRA >>>>



\*\*\* End of Report \*\*\*