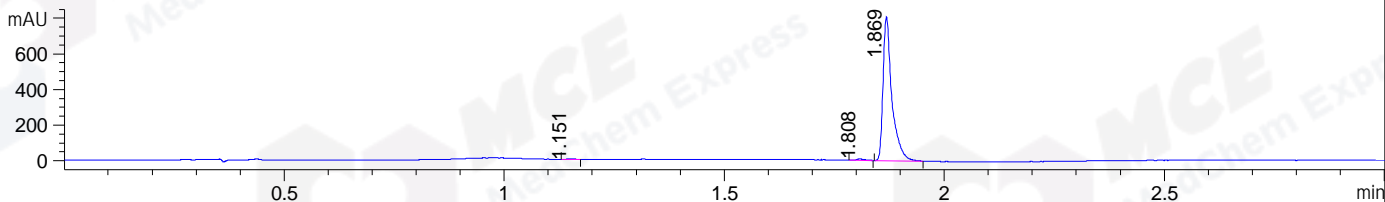
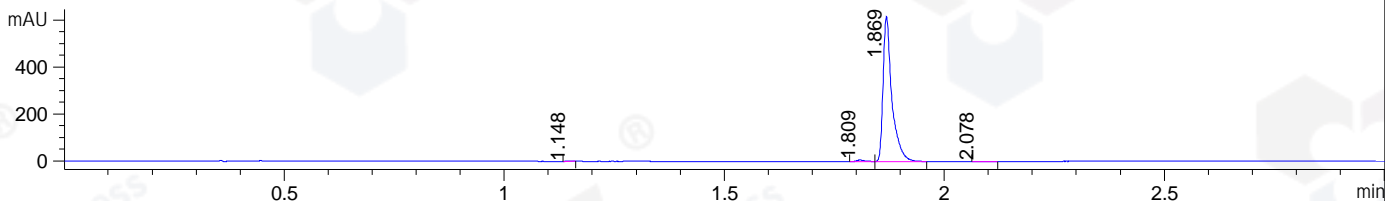


File ..DATA\2019\20191223\793\CPK2019-D20-24207-.D Tgt Mass (CHM):
 Injection Date : 23 Dec 19 5:34 pm +0800 Seq. Line : 112
 Sample Name : CPK2019-D20-24207 Location : P1-C-05
 Acq. Operator : ZJ_1432 Inj : 1
 Spec. Reported : MS Integration Inj Volume : 1 ul
 Acq. Method : D:\Chem32\1\data\2019\20191223\793\1-POS-3MIN.M
 Analysis Method : D:\CHEM32\1\DATA\2019\20191223\793\1-POS-3MIN.M
 Catalog No : HY-19352 Batch#24207
 Method Info : Mobile Phase: A: water(0.01%TFA) B:ACN(0.01%TFA)
 Gradient: 5% to 95%B within 1.3 min
 Flow Rate :1.8ml/min
 Column :SunFire C18, 4.6*50mm,3.5um A-RP-433
 Oven Temperature : 45□

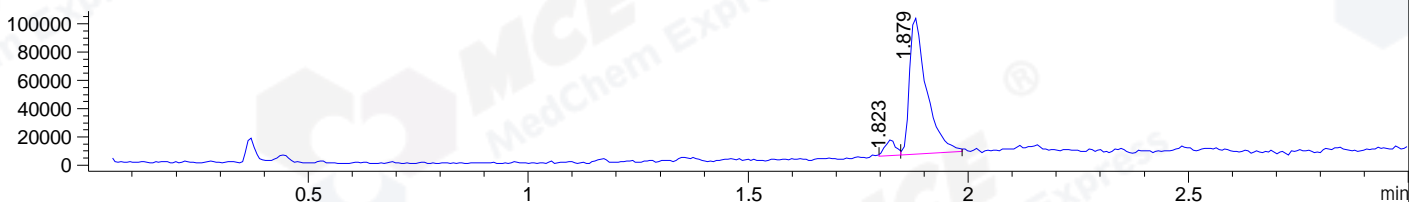
DAD1 B, Sig=214,4 Ref=off



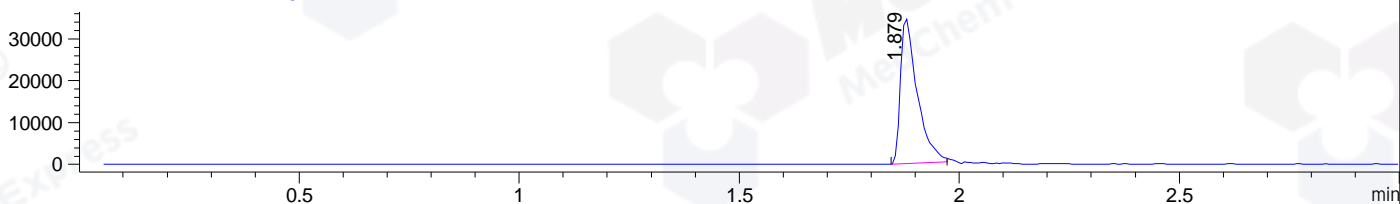
DAD1 C, Sig=254,4 Ref=off



MSD1 TIC, MS File ES-API, Pos, Scan, Frag: 70



Ion 390, MSD1 390, Target Mass 389 +H Positive, EIC=389.7:390.7



Integration Results for DAD1 B, Sig=214,4 Ref=off

RetTim	Width	Area	Height	Area%	MS (+)
1.15	0.02	3.40	2.88	0.30	219
1.81	0.02	9.00	7.60	0.79	219
1.87	0.02	1126.19	808.79	98.91	390

Integration Results for DAD1 C, Sig=254,4 Ref=off

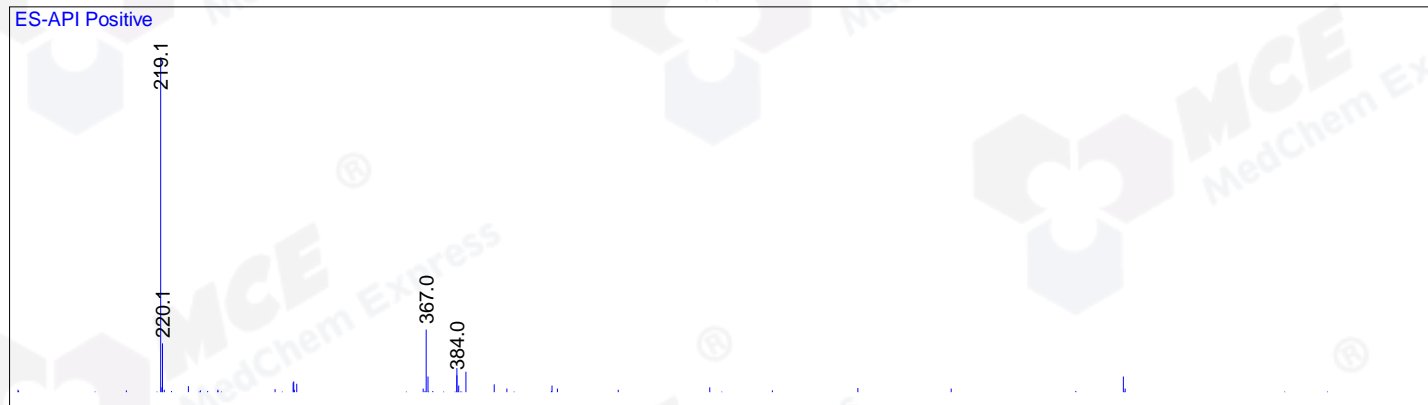
RetTim	Width	Area	Height	Area%	MS (+)
1.15	0.02	0.84	0.90	0.10	219
1.81	0.02	8.26	6.64	0.95	219
1.87	0.02	858.24	618.20	98.70	390
2.08	0.03	2.23	1.30	0.26	219

Integration Results for MSD1 TIC, MS File

RetTim	Width	Area	Height	Area%	MS (+)
1.82	0.03	18890.81	11264.89	6.75	219
1.88	0.04	261047.63	96743.14	93.25	390

Ret. Time: 1.82

<<<< POSITIVE SPECTRA >>>>



Ret. Time: 1.88

