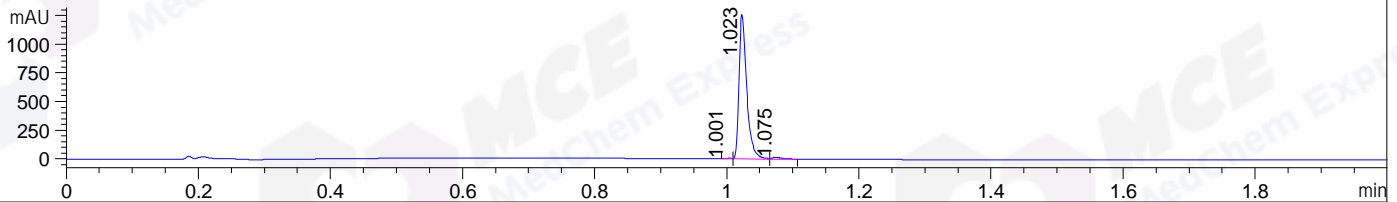
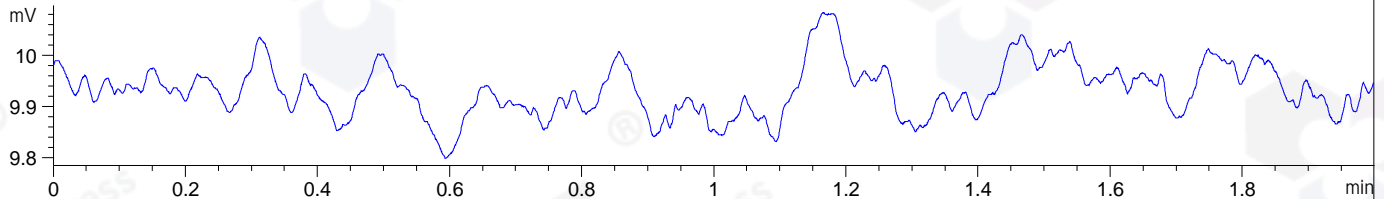


File ..20200612 2020-06-12 15-38-00\ZG7972-005-3.D Tgt Mass (CHM):
Injection Date : 12 Jun 20 5:04 pm +0800 Seq. Line : 23
Sample Name : ZG7972-005-3 Location : P1-A-06
Acq. Operator : SYSTEM Inj : 1
Spec. Reported : MS Integration Inj Volume : 0.2 ul
Acq. Method : D:\LCMS03\Data\20200612\20200612 2020-06-12 15-38-00\1-POS-UPLC2.0MIN(0.8ML)
Analysis Method : D:\LCMS03\Data\20200612\20200612 2020-06-12 15-38-00\1-POS-UPLC2.0MIN(0.8ML) .1
Catalog No : HY-19356A
Method Info : Mobile Phase: A: water(0.01%TFA) B:ACN(0.01%TFA)
Gradient: 5% to 95%B within 0.6 min
Flow Rate :0.8ml/min
Column :Poroshell 120 EC- C18, 2.1*50mm,1.9um A-RP-530
Oven Temperature : 45C

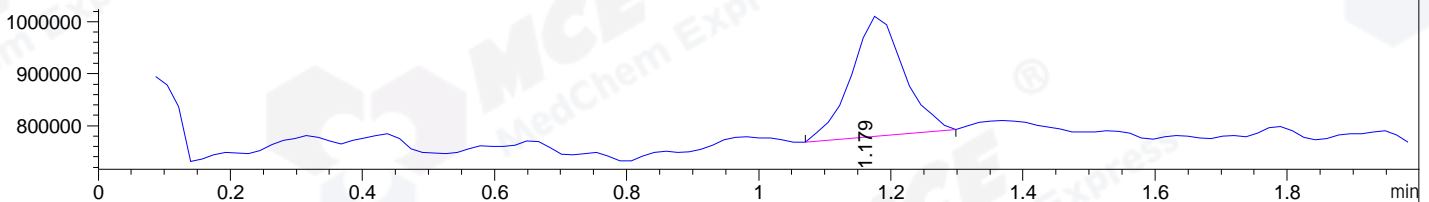
DAD1 A, Sig=214,4 Ref=off



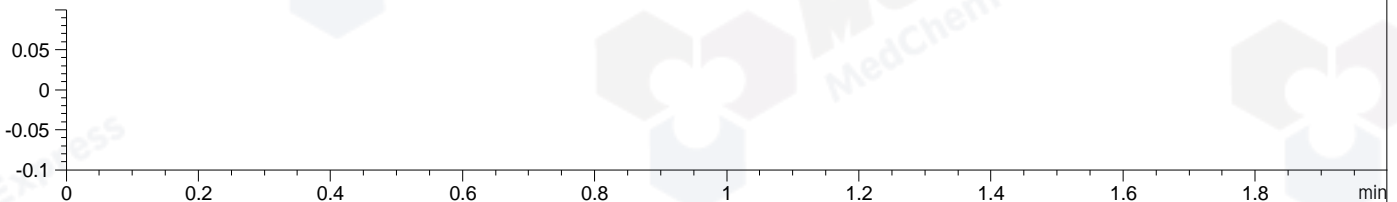
ELS1 A, ELSD Signal



MSD1 TIC, MS File ES-API, Pos, Scan, Frag: 70



Ion 1, MSD1 1, Target Mass 0 +H Positive, EIC=0.7:1.7



Integration Results for DAD1 A, Sig=214,4 Ref=off

RetTim	Width	Area	Height	Area%	MS (+)
1.00	0.01	2.95	4.73	0.28	145
1.02	0.01	1018.99	1266.78	98.40	145
1.07	0.01	13.62	15.29	1.32	145

Integration Results for ELS1 A, ELSD Signal

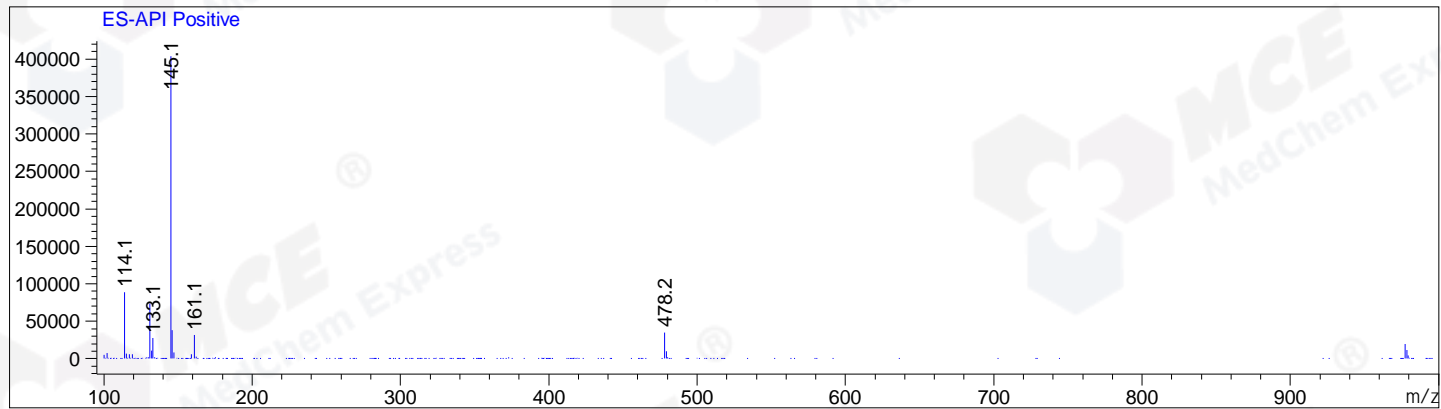
RetTim	Width	Area	Height	Area%	MS (+)
--------	-------	------	--------	-------	--------

Integration Results for MSD1 TIC, MS File

RetTim	Width	Area	Height	Area%	MS (+)
1.18	0.09	1271504.50	231898.08	100.00	145

Ret. Time: 1.18

<<<< POSITIVE SPECTRA >>>>



*** End of Report ***