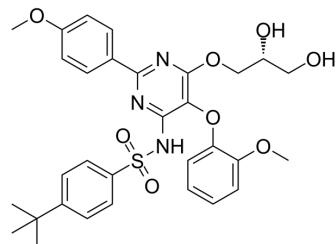


## Ro 46-8443

Cat. No.:	HY-19431
CAS No.:	175556-12-4
Molecular Formula:	C <sub>31</sub> H <sub>35</sub> N <sub>3</sub> O <sub>8</sub> S
Molecular Weight:	609.69
Target:	Endothelin Receptor
Pathway:	GPCR/G Protein
Storage:	4°C, sealed storage, away from moisture * In solvent : -80°C, 6 months; -20°C, 1 month (sealed storage, away from moisture)



### SOLVENT & SOLUBILITY

In Vitro	DMSO : 250 mg/mL (410.04 mM; Need ultrasonic)						
	Preparing Stock Solutions	Solvent Concentration	Mass	1 mg	5 mg	10 mg	
				1 mM	1.6402 mL	8.2009 mL	16.4018 mL
				5 mM	0.3280 mL	1.6402 mL	3.2804 mL
				10 mM	0.1640 mL	0.8201 mL	1.6402 mL
Please refer to the solubility information to select the appropriate solvent.							
In Vivo	1. Add each solvent one by one: 10% DMSO >> 40% PEG300 >> 5% Tween-80 >> 45% saline Solubility: ≥ 2.08 mg/mL (3.41 mM); Clear solution						
	2. Add each solvent one by one: 10% DMSO >> 90% (20% SBE-β-CD in saline) Solubility: 2.08 mg/mL (3.41 mM); Suspended solution; Need ultrasonic						
	3. Add each solvent one by one: 10% DMSO >> 90% corn oil Solubility: ≥ 2.08 mg/mL (3.41 mM); Clear solution						

### BIOLOGICAL ACTIVITY

Description	Ro 46-8443 is the first non-peptide endothelin ET <sub>B</sub> receptor selective antagonist. Ro 46-8443 displays an at least 100-fold selectivity for ET <sub>B</sub> (IC <sub>50</sub> : 34-69 nM) over ET <sub>A</sub> receptors (IC <sub>50</sub> : 6800 nM) <sup>[1][2]</sup> .	
IC <sub>50</sub> & Target	ET <sub>B</sub> 34-69 nM (IC <sub>50</sub> )	ET <sub>A</sub> 6800 nM (IC <sub>50</sub> )

### REFERENCES

---

[1]. Breu V, et al. In vitro characterisation of Ro 46-8443, the first non-peptide antagonist selective for the endothelin ETB receptor. FEBS Lett. 1996;383(1-2):37-41.

[2]. Clozel M, et al. The role of ETB receptors in normotensive and hypertensive rats as revealed by the non-peptide selective ETB receptor antagonist Ro 46-8443. FEBS Lett. 1996;383(1-2):42-45.

---

**Caution: Product has not been fully validated for medical applications. For research use only.**

Tel: 609-228-6898

Fax: 609-228-5909

E-mail: [tech@MedChemExpress.com](mailto:tech@MedChemExpress.com)

Address: 1 Deer Park Dr, Suite Q, Monmouth Junction, NJ 08852, USA