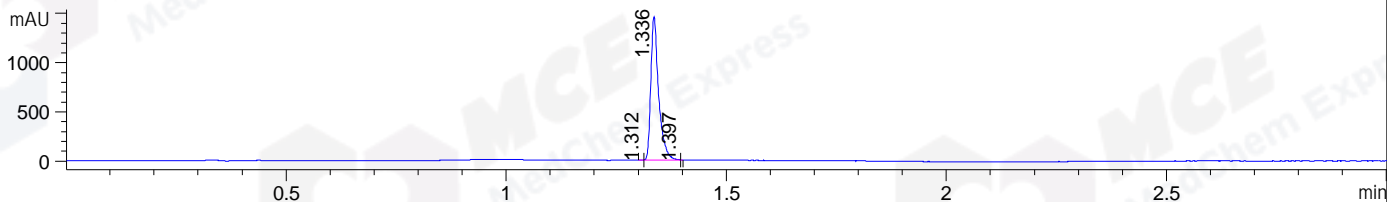
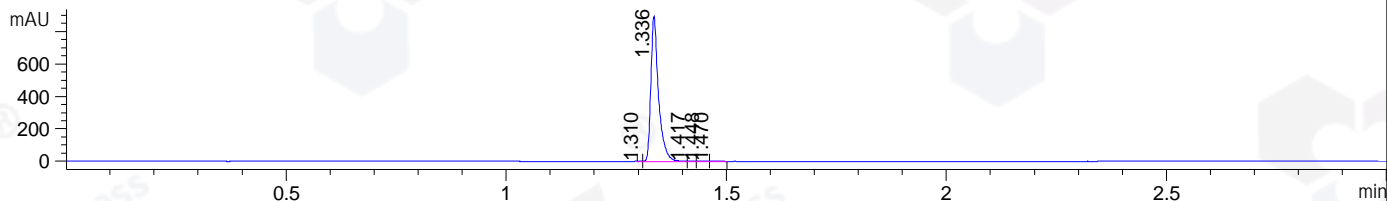


File ..1\DATA\2020\20200103\802\BIZ2020-102-SCH3.D Tgt Mass (CHM):
 Injection Date : 3 Jan 20 11:39 am +0800 Seq. Line : 36
 Sample Name : BIZ2020-102-SCH3 Location : P1-A-07
 Acq. Operator : ZJ_1432 Inj : 1
 Spec. Reported : MS Integration Inj Volume : 1 ul
 Acq. Method : D:\Chem32\1\data\2020\20200103\802\1-POS-3MIN.M
 Analysis Method : D:\CHEM32\1\DATA\2020\20200103\802\1-POS-3MIN.M
 Catalog No : HY-19436 Batch#58578
 Method Info : Mobile Phase: A: water(0.01%TFA) B:ACN(0.01%TFA)
 Gradient: 5% to 95%B within 1.3 min
 Flow Rate :1.8ml/min
 Column :SunFire C18, 4.6*50mm,3.5um A-RP-433
 Oven Temperature : 45□

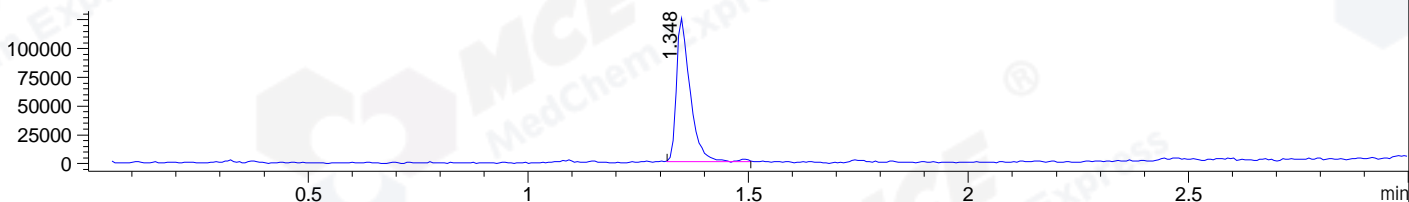
DAD1 B, Sig=214,4 Ref=off



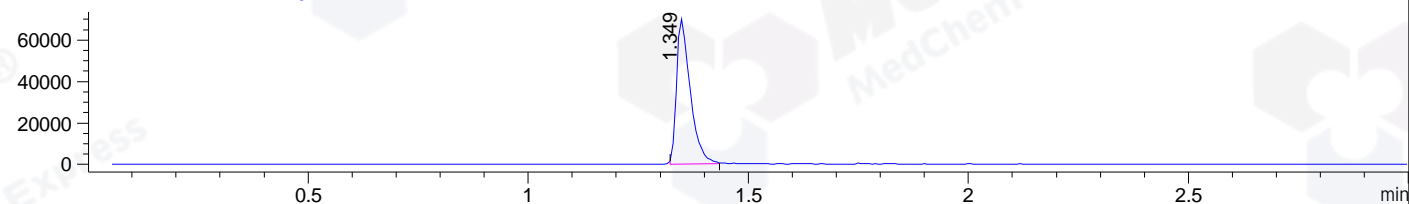
DAD1 C, Sig=254,4 Ref=off



MSD1 TIC, MS File ES-API, Pos, Scan, Frag: 70



Ion 411, MSD1 411, Target Mass 410 +H Positive, EIC=410.7:411.7



Integration Results for DAD1 B, Sig=214,4 Ref=off

RetTim	Width	Area	Height	Area%	MS (+)
1.31	0.01	1.40	3.34	0.08	ND
1.34	0.02	1798.52	1462.35	99.91	411
1.40	0.00	0.28	1.89	0.02	411

Integration Results for DAD1 C, Sig=254,4 Ref=off

RetTim	Width	Area	Height	Area%	MS (+)
1.31	0.00	0.53	1.76	0.05	ND
1.34	0.02	1081.94	894.43	99.37	411
1.42	0.02	1.52	1.34	0.14	ND
1.45	0.02	2.54	1.84	0.23	ND
1.47	0.02	2.31	1.75	0.21	ND

Integration Results for MSD1 TIC, MS File

RetTim	Width	Area	Height	Area%	MS (+)
1.35	0.03	271100.91	124715.88	100.00	411

Ret. Time: 1.35

<<<< POSITIVE SPECTRA >>>>

ES-API Positive

