

Roluperidone

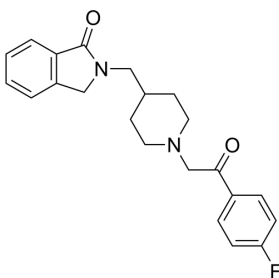
Cat. No.:	HY-19469
CAS No.:	359625-79-9
Batch No.:	212662
Chemical Name:	1H-Indol-1-one, 2-[[1-[2-(4-fluorophenyl)-2-oxoethyl]-4-piperidinyl]methyl]-2,3-dihydro-

PHYSICAL AND CHEMICAL PROPERTIES

Molecular Formula:	C ₂₂ H ₂₃ FN ₂ O ₂		
Molecular Weight:	366.43		
Storage:	Powder	-20°C	3 years
		4°C	2 years

* The compound is unstable in solutions, freshly prepared is recommended.

Chemical Structure:



ANALYTICAL DATA

Appearance:	White to yellow (Solid)
¹ H NMR Spectrum:	Consistent with structure
LCMS:	Consistent with structure
Purity (LCMS):	99.55%
Conclusion:	The product has been tested and complies with the given specifications.

Caution: Product has not been fully validated for medical applications. For research use only.

Tel: 609-228-6898

Fax: 609-228-5909

E-mail: tech@MedChemExpress.com

Address: 1 Deer Park Dr, Suite Q, Monmouth Junction, NJ 08852, USA