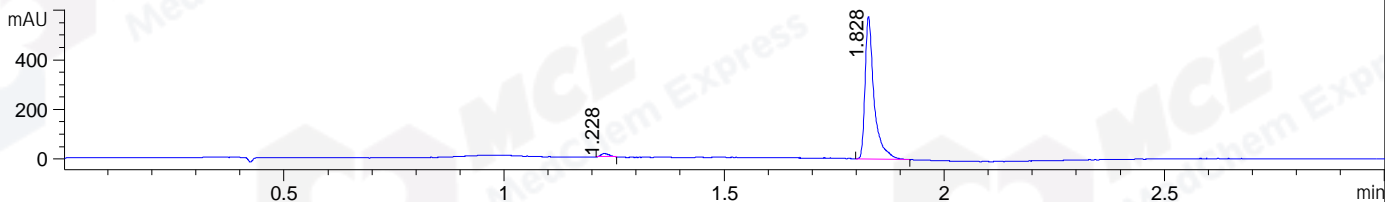
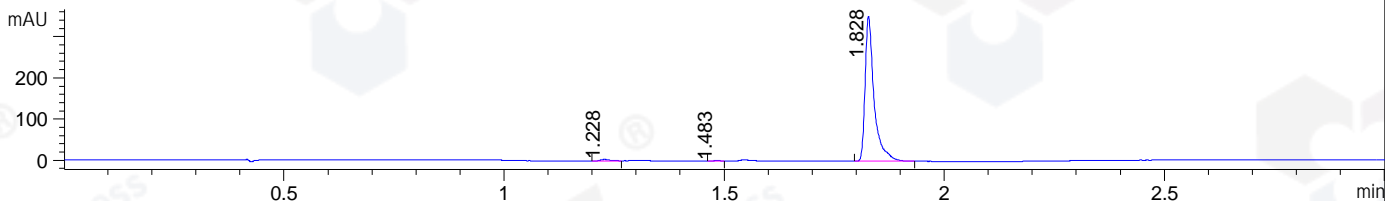


File ..\DATA\2019\20191227\795\BIZ2019-D25-CXL4.D Tgt Mass (CHM):
 Injection Date : 27 Dec 19 2:38 pm +0800 Seq. Line : 74
 Sample Name : BIZ2019-D25-CXL4 Location : P1-A-03
 Acq. Operator : ZJ_1432 Inj : 1
 Spec. Reported : MS Integration Inj Volume : 1 ul
 Acq. Method : D:\Chem32\1\data\2019\20191227\795\1-POS-3MIN.M
 Analysis Method : D:\CHEM32\1\DATA\2019\20191227\795\1-POS-3MIN.M
 Catalog No : HY-19485 Batch#58539
 Method Info : Mobile Phase: A: water(0.01%TFA) B:ACN(0.01%TFA)
 Gradient: 5% to 95%B within 1.3 min
 Flow Rate :1.8ml/min
 Column :SunFire C18, 4.6*50mm,3.5um A-RP-433
 Oven Temperature : 45□

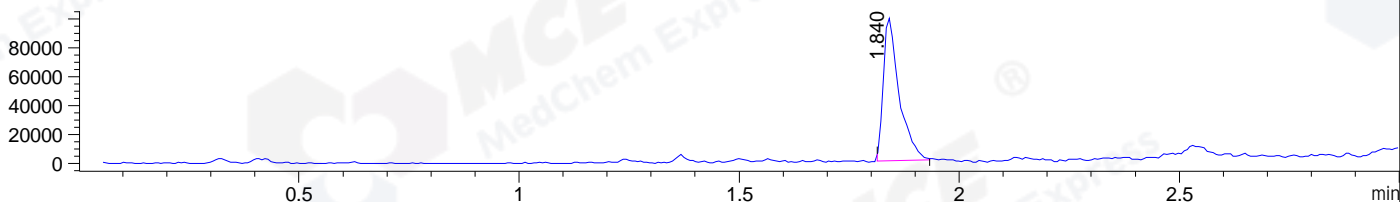
DAD1 B, Sig=214,4 Ref=off



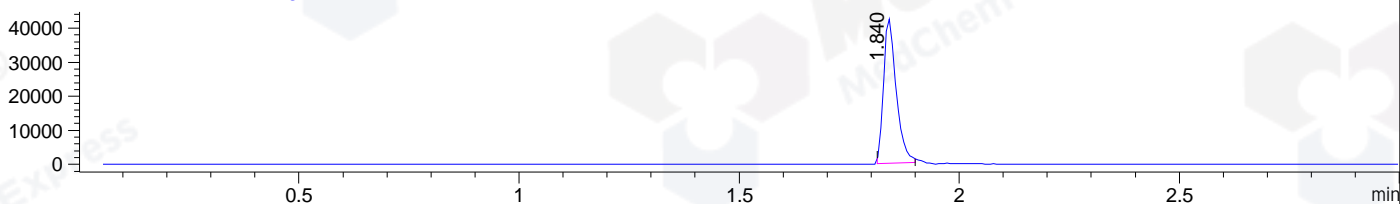
DAD1 C, Sig=254,4 Ref=off



MSD1 TIC, MS File ES-API, Pos, Scan, Frag: 70



Ion 550, MSD1 550, Target Mass 549 +H Positive, EIC=549.7:550.7



Integration Results for DAD1 B, Sig=214,4 Ref=off

RetTim	Width	Area	Height	Area%	MS (+)
1.23	0.02	14.97	12.62	1.80	140
1.83	0.02	814.84	575.46	98.20	550

Integration Results for DAD1 C, Sig=254,4 Ref=off

RetTim	Width	Area	Height	Area%	MS (+)
1.23	0.02	4.83	3.44	0.96	ND
1.48	0.02	0.93	0.89	0.18	ND
1.83	0.02	499.99	352.23	98.86	550

Integration Results for MSD1 TIC, MS File

RetTim	Width	Area	Height	Area%	MS (+)
1.84	0.04	246925.20	98732.43	100.00	550

Ret. Time: 1.84

<<<< POSITIVE SPECTRA >>>>

ES-API Positive

