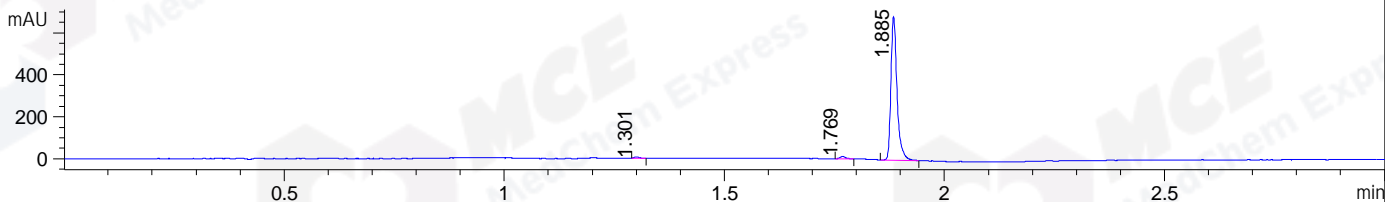
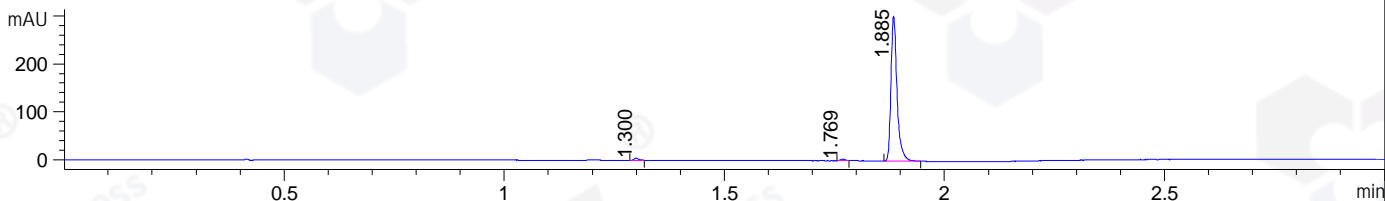


File ..DATA\2020\20200416\927\CPK2020-414-18940-.D Tgt Mass (CHM):
 Injection Date : 16 Apr 20 2:22 pm +0800 Seq. Line : 69
 Sample Name : CPK2020-414-18940 Location : P1-B-04
 Acq. Operator : ZJ_1432 Inj : 1
 Spec. Reported : MS Integration Inj Volume : 0.5 ul
 Acq. Method : D:\Chem32\1\data\2020\20200416\927\1-POS-3MIN.M
 Analysis Method : D:\CHEM32\1\DATA\2020\20200416\927\1-POS-3MIN.M
 Catalog No : HY-19529
 Method Info : Mobile Phase: A: water(0.01%TFA) B:ACN(0.01%TFA)
 Gradient: 5% to 95%B within 1.3 min
 Flow Rate :1.8ml/min
 Column :SunFire C18, 4.6*50mm,3.5um A-RP-607
 Oven Temperature : 45□

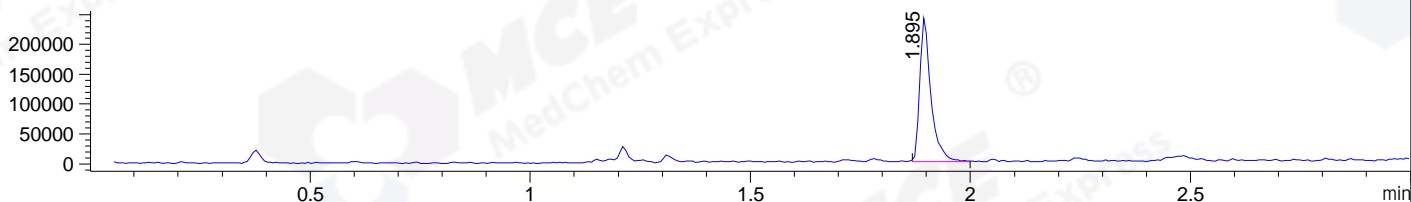
DAD1 B, Sig=214,4 Ref=off



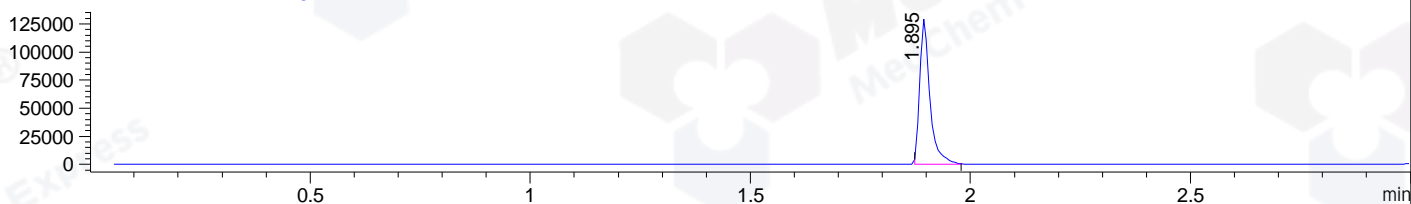
DAD1 C, Sig=254,4 Ref=off



MSD1 TIC, MS File ES-API, Pos, Scan, Frag: 70



Ion 474, MSD1 474, Target Mass 473 +H Positive, EIC=473.7:474.7



Integration Results for DAD1 B, Sig=214,4 Ref=off

RetTim	Width	Area	Height	Area%	MS (+)
1.30	0.01	4.41	6.31	0.66	491
1.77	0.01	11.02	11.89	1.64	430
1.88	0.02	656.31	685.19	97.70	474

Integration Results for DAD1 C, Sig=254,4 Ref=off

RetTim	Width	Area	Height	Area%	MS (+)
1.30	0.01	3.86	4.51	1.31	491
1.77	0.01	2.51	3.13	0.85	430
1.88	0.02	288.36	301.93	97.84	474

Integration Results for MSD1 TIC, MS File

RetTim	Width	Area	Height	Area%	MS (+)
1.90	0.03	426435.78	242966.92	100.00	474

Ret. Time: 1.90

<<<< POSITIVE SPECTRA >>>>

ES-API Positive

