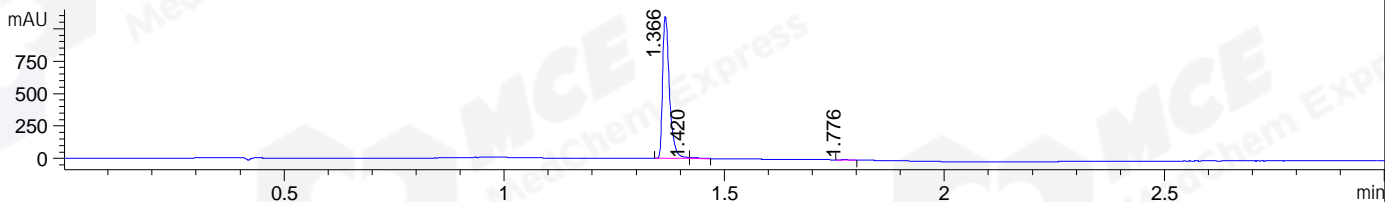
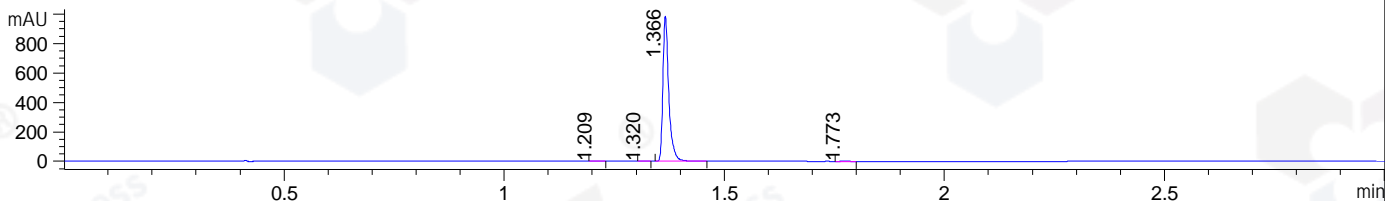


File ..\DATA\2019\20190718\636\CPK2019-717-21062.D Tgt Mass (CHM):
 Injection Date : 18 Jul 19 1:31 pm +0800 Seq. Line : 4
 Sample Name : CPK2019-717-21062 Location : P1-C-05
 Acq. Operator : ZJ_1432 Inj : 1
 Spec. Reported : MS Integration Inj Volume : 1 ul
 Acq. Method : D:\Chem32\1\data\2019\20190718\636\1-POS-3MIN.M
 Analysis Method : D:\CHEM32\1\DATA\2019\20190718\636\1-POS-3MIN.M
 Catalog No : HY-19530 Batch#21062
 Method Info : Mobile Phase: A: water(0.01%TFA) B:ACN(0.01%TFA)
 Gradient: 5% to 95%B within 1.3 min
 Flow Rate :1.8ml/min
 Column :SunFire C18, 4.6*50mm,3.5um A-RP-433
 Oven Temperature : 45□

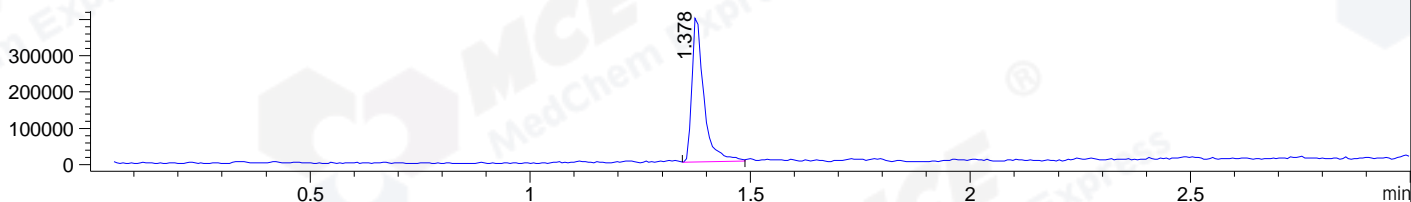
DAD1 B, Sig=214,4 Ref=off



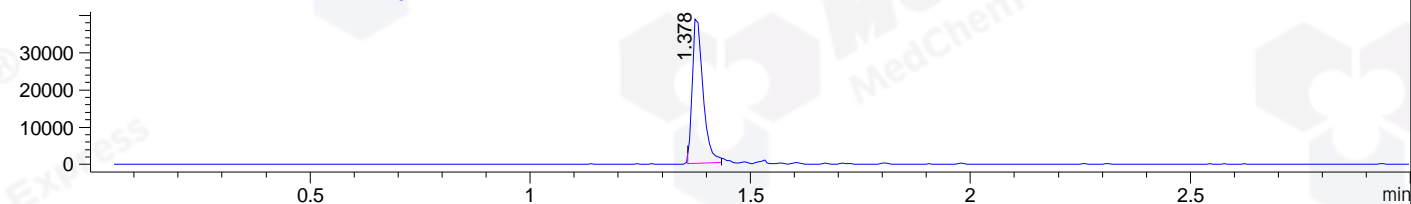
DAD1 C, Sig=254,4 Ref=off



MSD1 TIC, MS File ES-API, Pos, Scan, Frag: 70



Ion 555.0944, MSD1 555.0944, Target Mass 554.0944 +H Positive, EIC=554.79:555.79



Integration Results for DAD1 B, Sig=214,4 Ref=off

RetTim	Width	Area	Height	Area%	MS (+)
1.37	0.02	1178.33	1092.06	98.92	278
1.42	0.02	9.37	6.78	0.79	554
1.78	0.02	3.49	2.53	0.29	ND

Integration Results for DAD1 C, Sig=254,4 Ref=off

RetTim	Width	Area	Height	Area%	MS (+)
1.21	0.02	1.16	1.09	0.13	ND
1.32	0.02	0.62	0.56	0.07	ND
1.37	0.02	912.75	987.31	99.56	278
1.77	0.02	2.24	1.66	0.24	ND

Integration Results for MSD1 TIC, MS File

RetTim	Width	Area	Height	Area%	MS (+)
1.38	0.03	763500.75	408961.97	100.00	278

Ret. Time: 1.38

<<<< POSITIVE SPECTRA >>>>

ES-API Positive

